

Datasheet for 600-401-CA7**IRGC Antibody****Overview**

Description:	Anti-IRGC (RABBIT) Antibody - 600-401-CA7
Item No.:	600-401-CA7
Size:	100 µg
Applications:	ELISA, IF, IHC, WB
Reactivity:	Human, Mouse, Rat
Host Species:	Rabbit

Product Details

Background:	Immunity-related GTPases (IRG) (also known as p47 GTPases) are a family of GTPase proteins found in vertebrates, which play critical roles in mediating innate resistance to intracellular pathogens. IRG genes have been found in a number of mammals and lower species including mice, rats, zebrafish and humans. Most of the mouse genes contain interferon-stimulated response elements which mediate transcriptional activation by IFNs. In humans, only two IRG genes have been found: human IRGC encodes a full-length IRG protein that, like the mouse homologue, is constitutively expressed in testis, while human IRGM encodes a considerably truncated protein that is constitutively expressed in cultured cells including some macrophage cell lines. As the two human genes IRGC and IRGM are not subject to IFN control, it has been suggested that the host resistance mechanism supported by IRG proteins in the mouse is lacking in humans.
Synonyms:	IRGC Antibody, IFGGE, IRGC1, Iigp5, CINEMA, R30953_1, IIGP5, Interferon-inducible GTPase 5, Immunity-related GTPase cinema 1
Host Species:	Rabbit
Clonality:	Polyclonal
Format:	IgG

Target Details

Gene Name:	IRGC
Reactivity:	Human, Mouse, Rat

Immunogen Type:	Conjugated Peptide
Immunogen:	Anti-IRGC antibody was prepared from whole rabbit serum produced by repeated immunizations with a 12 amino acid synthetic peptide near the C-terminus of human IRGC.
Purity/Specificity:	Anti-IRGC Antibody was affinity purified from monospecific antiserum by immunoaffinity chromatography. Two isoforms of IRGC are known to exist; this antibody will recognize both isoforms.
Relevant Links:	<ul style="list-style-type: none">• UniProtKB - Q6NXR0• GenelD - 56269• NCBI - NP_062558

Application Details

Tested Applications:	ELISA, IF, IHC, WB
Application Note:	Anti-IRGC Antibody has been tested for use in ELISA, Western Blotting, Immunocytochemistry and Immunofluorescence. Specific conditions for reactivity should be optimized by the end user. Expect a band at approximately 50 kDa in Western Blots of specific cell lysates and tissues.
Assay Dilutions:	All assays should be optimized by the user. Recommended dilutions (if any) may be listed below.
ELISA:	1:10,000 - 1:20,000
IF:	20 µg/mL
WB:	1-2 µg/mL

Formulation

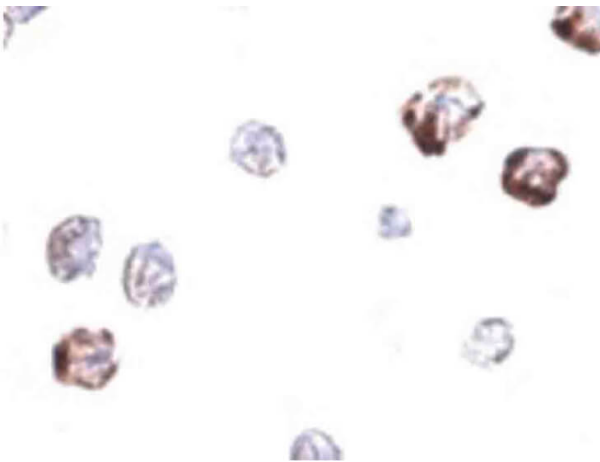
Physical State:	Liquid (sterile filtered)
Concentration:	1 mg/mL by UV absorbance at 280 nm
Buffer:	0.01 M Sodium Phosphate, 0.25 M Sodium Chloride, pH 7.2
Preservative:	0.02% (w/v) Sodium Azide
Stabilizer:	None

Shipping & Handling

Shipping Condition:	Dry Ice
----------------------------	---------

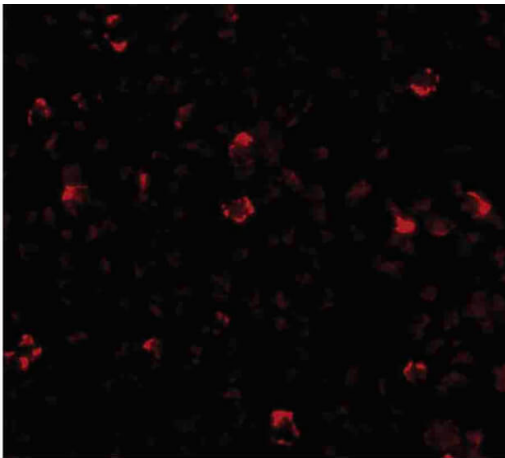
Storage Condition:	Store vial at -20° C prior to opening. Aliquot contents and freeze at -20° C or below for extended storage. Avoid cycles of freezing and thawing. Centrifuge product if not completely clear after standing at room temperature. This product is stable for several weeks at 4° C as an undiluted liquid. Dilute only prior to immediate use.
Expiration:	Expiration date is one (1) year from date of receipt.

Images



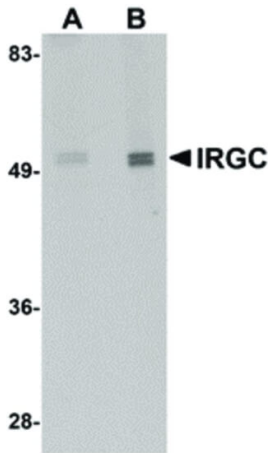
Immunohistochemistry

Immunocytochemistry of IRGC antibody. Tissue: A20 cells. Fixation: formalin fixed paraffin embedded. Antigen retrieval: not required. Primary antibody: IRGC antibody at 2.5 µg/mL for 1 h at RT. Secondary antibody: Peroxidase rabbit secondary antibody at 1:10,000 for 45 min at RT. Localization: IRGC is a membrane protein. Staining: IRGC as precipitated brown signal with blue counterstain.



Immunofluorescence Microscopy

Immunofluorescence Microscopy of IRGCb antibody. Tissue: A20 cells. Fixation: 0.5% PFA. Antigen retrieval: not required. Primary antibody: IRGCb antibody at 20 µg/mL for 1 h at RT. Secondary antibody: Fluorescein rabbit secondary antibody at 1:10,000 for 45 min at RT. Localization: IRGCb is a membrane protein. Staining: IRGCb as red fluorescent signal.



Western Blot

Western Blot of IRGC antibody. Lane 1: Mouse brain tissue lysate with IRGC antibody at 1 µg/mL. Lane 2: Mouse brain tissue lysate with IRGC antibody at 2 µg/mL. Secondary antibody: Peroxidase rabbit secondary antibody at 1:10,000 for 45 min at RT. Block: 5% BLOTTO overnight at 4°C. Predicted/Observed size: 50 kDa, 50 kDa for IRGC. Other band(s): IRGC splice variants and isoforms.

Disclaimer

This product is for research use only and is not intended for therapeutic or diagnostic applications. Please contact a technical service representative for more information. All products of animal origin manufactured by Rockland Immunochemicals are derived from starting materials of North American origin. Collection was performed in United States Department of Agriculture (USDA) inspected facilities and all materials have been inspected and certified to be free of disease and suitable for exportation. All properties listed are typical characteristics and are not specifications. All suggestions and data are offered in good faith but without guarantee as conditions and methods of use of our products are beyond our control. All claims must be made within 30 days following the date of delivery. The prospective user must determine the suitability of our materials before adopting them on a commercial scale. Suggested uses of our products are not recommendations to use our products in violation of any patent or as a license under any patent of Rockland Immunochemicals, Inc. If you require a commercial license to use this material and do not have one, then return this material, unopened to: Rockland Inc., P.O. BOX 5199, Limerick, Pennsylvania, USA.