

**Datasheet for 600-401-CA3****IRF4 Antibody****Overview**

<b>Description:</b>	Anti-IRF4 (RABBIT) Antibody - 600-401-CA3
<b>Item No.:</b>	600-401-CA3
<b>Size:</b>	100 µg
<b>Applications:</b>	ELISA, IF, IHC, WB
<b>Reactivity:</b>	Human, Mouse, Rat
<b>Host Species:</b>	Rabbit

**Product Details**

<b>Background:</b>	Interferons (IFNs) are involved in a multitude of immune interactions during viral infections and play a major role in both the induction and regulation of innate and adaptive antiviral mechanisms. During infection, host-virus interactions signal downstream molecules such as transcription factors such as IFN regulatory factor-3 (IRF3) which can act to stimulate transcription of IFN-alpha/beta genes. Another member, IRF7 has been shown to play a role in the transcriptional activation of virus-inducible cellular genes, including interferon beta chain genes. IRF4 expression is tightly regulated in resting primary T cells and plays an essential role in the homeostasis and function of mature lymphocytes. IRF4 is induced by Toll-like receptor (TLR) activation and acts as a negative regulator of TLR signaling.
<b>Synonyms:</b>	IRF4 Antibody, MUM1, LSIRF, NF-EM5, MUM1, Interferon regulatory factor 4, Lymphocyte-specific interferon regulatory factor, IRF-4
<b>Host Species:</b>	Rabbit
<b>Clonality:</b>	Polyclonal
<b>Format:</b>	IgG

**Target Details**

<b>Gene Name:</b>	IRF4
<b>Reactivity:</b>	Human, Mouse, Rat
<b>Immunogen Type:</b>	Conjugated Peptide

<b>Immunogen:</b>	Anti-IRF4 antibody was prepared from whole rabbit serum produced by repeated immunizations with a 16 amino acid synthetic peptide near the C-terminus of human IRF4.
<b>Purity/Specificity:</b>	Anti-IRF4 Antibody was affinity purified from monospecific antiserum by immunoaffinity chromatography. IRF4 antibody is predicted to not cross-react with other IRF protein family members. IRF4 often migrates at a higher than predicted molecular weight in SDS-PAGE.
<b>Relevant Links:</b>	<ul style="list-style-type: none"><li>• <a href="#">UniProtKB - Q15306</a></li><li>• <a href="#">GeneID - 3662</a></li><li>• <a href="#">NCBI - NP_002451</a></li></ul>

## Application Details

<b>Tested Applications:</b>	ELISA, IF, IHC, WB
<b>Application Note:</b>	Anti-IRF4 Antibody has been tested for use in ELISA, Western Blotting, Immunocytochemistry and Immunofluorescence. Specific conditions for reactivity should be optimized by the end user. Expect a band at approximately 52 kDa in Western Blots of specific cell lysates and tissues.
<b>Assay Dilutions:</b>	All assays should be optimized by the user. Recommended dilutions (if any) may be listed below.
<b>ELISA:</b>	1:10,000
<b>IF:</b>	20 µg/mL
<b>WB:</b>	1 µg/mL

## Formulation

<b>Physical State:</b>	Liquid (sterile filtered)
<b>Concentration:</b>	1.0 mg/ml by UV absorbance at 280 nm
<b>Buffer:</b>	0.01 M Sodium Phosphate, 0.25 M Sodium Chloride, pH 7.2
<b>Preservative:</b>	0.02% (w/v) Sodium Azide
<b>Stabilizer:</b>	None

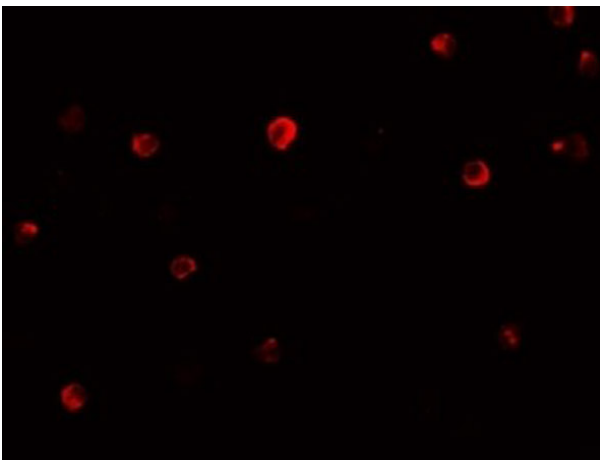
## Shipping & Handling

<b>Shipping Condition:</b>	Dry Ice
----------------------------	---------

**Storage Condition:** Store vial at -20° C prior to opening. Aliquot contents and freeze at -20° C or below for extended storage. Avoid cycles of freezing and thawing. Centrifuge product if not completely clear after standing at room temperature. This product is stable for several weeks at 4° C as an undiluted liquid. Dilute only prior to immediate use.

**Expiration:** Expiration date is one (1) year from date of receipt.

## Images



### Immunofluorescence Microscopy

Immunofluorescence of IRF4.

Cell: Jurkat cells.

Primary Antibody: IRF4 antibody at 20 µg/mL.

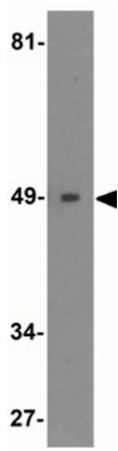


### Immunocytochemistry

Immunocytochemistry of IRF4.

Cell: Jurkat cells.

Primary Antibody: IRF4 antibody at 10 µg/mL.

**Western Blot**

Western blot analysis of IRF4.

Load: Ramos cell lysate.

Primary Antibody: IRF4 antibody at 0.5  $\mu\text{g}/\text{mL}$ .

**Disclaimer**

This product is for research use only and is not intended for therapeutic or diagnostic applications. Please contact a technical service representative for more information. All products of animal origin manufactured by Rockland Immunochemicals are derived from starting materials of North American origin. Collection was performed in United States Department of Agriculture (USDA) inspected facilities and all materials have been inspected and certified to be free of disease and suitable for exportation. All properties listed are typical characteristics and are not specifications. All suggestions and data are offered in good faith but without guarantee as conditions and methods of use of our products are beyond our control. All claims must be made within 30 days following the date of delivery. The prospective user must determine the suitability of our materials before adopting them on a commercial scale. Suggested uses of our products are not recommendations to use our products in violation of any patent or as a license under any patent of Rockland Immunochemicals, Inc. If you require a commercial license to use this material and do not have one, then return this material, unopened to: Rockland Inc., P.O. BOX 5199, Limerick, Pennsylvania, USA.