

## Datasheet for 600-401-CA0

# IRF2BP2 Antibody

### Overview

<b>Description:</b>	Anti-IRF2BP2 (RABBIT) Antibody - 600-401-CA0
<b>Item No.:</b>	600-401-CA0
<b>Size:</b>	100 µg
<b>Applications:</b>	ELISA, IHC, WB
<b>Reactivity:</b>	Human, Mouse
<b>Host Species:</b>	Rabbit

### Product Details

<b>Background:</b>	IRF2BP2, like the related protein IRF2BP1, is a co-repressor that interacts specifically with the C-terminal repression domain of Interferon Regulatory Factor 2 (IRF2). IRF2BP2 is a direct target gene of p53 and is involved in cell survival during the p53 stress response, able to impede the p53-mediated transactivation of p21 and Bax. IRF2BP2 is also a co-factor of VGLL4 and is required to induce the expression of vascular endothelial growth factor A (VEGF-A) in muscle. It is normally found in the nucleus of skeletal muscle and cardiac cells, but can be found in the cytoplasm during skeletal muscle differentiation.
<b>Synonyms:</b>	IRF2BP2 Antibody, Interferon regulatory factor 2-binding protein 2, IRF-2-binding protein 2
<b>Host Species:</b>	Rabbit
<b>Clonality:</b>	Polyclonal
<b>Format:</b>	IgG

### Target Details

<b>Gene Name:</b>	IRF2BP2
<b>Reactivity:</b>	Human, Mouse
<b>Immunogen Type:</b>	Conjugated Peptide
<b>Immunogen:</b>	Anti-IRF2BP2 antibody was prepared from whole rabbit serum produced by repeated immunizations with an 18 amino acid synthetic peptide near the C-terminus of human IRF2BP2.

**Purity/Specificity:** Anti-IRF2BP2 Antibody was affinity purified from monospecific antiserum by immunoaffinity chromatography. At least two isoforms of IRF2BP2 are known to exist; this antibody will detect both. This antibody is predicted to not cross-react with any FOXD4 protein family members.

**Relevant Links:**

- [UniProtKB - Q7Z5L9](#)
- [GeneID - 359948](#)
- [NCBI - NP\\_892017](#)

## Application Details

**Tested Applications:** ELISA, IHC, WB

**Application Note:** Anti-IRF2BP2 Antibody has been tested for use in ELISA, Western Blotting, Immunocytochemistry. Specific conditions for reactivity should be optimized by the end user. Expect a band at approximately 61 kDa in Western Blots of specific cell lysates and tissues.

**Assay Dilutions:** All assays should be optimized by the user. Recommended dilutions (if any) may be listed below.

**ELISA:** 1:10,000

**WB:** 1 µg/mL

## Formulation

**Physical State:** Liquid (sterile filtered)

**Concentration:** 1 mg/mL by UV absorbance at 280 nm

**Buffer:** 0.01 M Sodium Phosphate, 0.25 M Sodium Chloride, pH 7.2

**Preservative:** 0.02% (w/v) Sodium Azide

**Stabilizer:** None

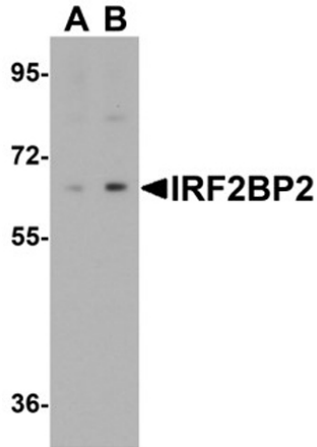
## Shipping & Handling

**Shipping Condition:** Dry Ice

**Storage Condition:** Store vial at -20° C prior to opening. Aliquot contents and freeze at -20° C or below for extended storage. Avoid cycles of freezing and thawing. Centrifuge product if not completely clear after standing at room temperature. This product is stable for several weeks at 4° C as an undiluted liquid. Dilute only prior to immediate use.

**Expiration:** Expiration date is one (1) year from date of receipt.

## Images



### Western Blot

Western blot analysis of IRF2BP2.

Load: HeLa cell lysate.

Primary Antibody: IRF2BP2 antibody at 1 µg/mL in (A) the absence and (B) the presence of blocking peptide.

### Immunocytochemistry

Immunocytochemistry of IRF2BP2.

Cell: A20 cells.

Primary Antibody: IRF2BP2 antibody at 2.5 µg/mL.



## Disclaimer

This product is for research use only and is not intended for therapeutic or diagnostic applications. Please contact a technical service representative for more information. All products of animal origin manufactured by Rockland Immunochemicals are derived from starting materials of North American origin. Collection was performed in United States Department of Agriculture (USDA) inspected facilities and all materials have been inspected and certified to be free of disease and suitable for exportation. All properties listed are typical characteristics and are not specifications. All suggestions and data are offered in good faith but without guarantee as conditions and methods of use of our products are beyond our control. All claims must be made within 30 days following the date of delivery. The prospective user must determine the suitability of our materials before adopting them on a commercial scale. Suggested uses of our products are not recommendations to use our products in violation of any patent or as a license under any patent of Rockland Immunochemicals, Inc. If you require a commercial license to use this material and do not have one, then return this material, unopened to: Rockland Inc., P.O. BOX 5199, Limerick, Pennsylvania, USA.