

Datasheet for 600-401-C98

Tyrosine Hydroxylase Antibody

Overview

Description:	Anti-Tyrosine Hydroxylase (RABBIT) Antibody - 600-401-C98
Item No.:	600-401-C98
Size:	100 µL
Applications:	IHC, WB
Reactivity:	Mammalian
Host Species:	Rabbit

Product Details

Background:	Tyrosine Hydroxylase Antibody detects Tyrosine Hydroxylase protein. Tyrosine hydroxylase (TH) is the rate-limiting enzyme in the synthesis of the catecholamines dopamine and norepinephrine. TH antibodies can therefore be used as markers for dopaminergic and noradrenergic neurons in a variety of applications including depression, schizophrenia, Parkinson's disease and drug abuse. TH antibodies can also be used to explore basic mechanisms of dopamine and norepinephrine signaling.
Synonyms:	Tyrosine 3-monoxygenase, Tyrosine 3-hydroxylase, TH
Host Species:	Rabbit
Clonality:	Polyclonal
Format:	IgG

Target Details

Gene Name:	Th
Reactivity:	Mammalian
Immunogen Type:	Native Protein
Immunogen:	Anti-Tyrosine Hydroxylase Antibody was produced by repeated immunizations with SDS-denatured, native rat tyrosine hydroxylase purified from pheochromocytoma.

Purity/Specificity: Anti-Tyrosine Hydroxylase Antibody is directed against rat Tyrosine Hydroxylase protein. The antibody was affinity purified from monospecific antiserum by immunoaffinity purification. Expect reactivity from mammals. Cross reactivity with Tyrosine Hydroxylase from other species has not been determined.

Relevant Links:

- [NCBI - NP_036872.1](#)
- [UniProtKB - P04177](#)
- [GeneID - 25085](#)

Application Details

Tested Applications: IHC, WB

Application Note: Anti-Tyrosine Hydroxylase (Rabbit) antibody is tested for use in Western Blotting and IHC/ICC and suitable for IF. Specific conditions for reactivity should be optimized by the end user. Expect a band of approximately 60 kDa in size corresponding to the tyrosine hydroxylase proteins in the appropriate cell lysate or extract.

Assay Dilutions: All assays should be optimized by the user. Recommended dilutions (if any) may be listed below.

IF: 1:1000

IHC: 1:1000

WB: 1:1000

Formulation

Physical State: Liquid

Concentration: Titrated value sufficient to run approximately 10 mini blots.

Buffer: 0.01 M HEPES, 0.15 M Sodium Chloride, pH 7.5

Stabilizer: 0.1 mg/ml Bovine Serum Albumin (BSA) - IgG and Protease free, 50% (v/v) Glycerol

Shipping & Handling

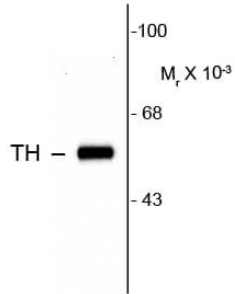
Shipping Condition: Dry Ice

Storage Condition: Store vial at -20° C prior to opening. This product is stable at 4° C as an undiluted liquid. For extended storage, aliquot contents and freeze at -20° C or below. Avoid cycles of freezing and thawing. Dilute only prior to immediate use.

Expiration: Expiration date is one (1) year from date of receipt.

Images

Anti-Tyrosine Hydroxylase



Western of rat caudate lysate showing specific immunolabeling of the ~60k tyrosine hydroxylase protein.

Western Blot

Western Blot of Rabbit anti-Tyrosine Hydroxylase antibody. Lane 1: rat caudate lysate. Lane 2: none. Load: 10 µg per lane. Primary antibody: Tyrosine Hydroxylase antibody at 1:1,000 for overnight at 4°C. Secondary antibody: IRDye800™ rabbit secondary antibody at 1:10,000 for 45 min at RT. Block: 5% BLOTTO overnight at 4°C. Predicted/Observed size: 60 kDa for Tyrosine Hydroxylase. Other band(s): none.

Disclaimer

This product is for research use only and is not intended for therapeutic or diagnostic applications. Please contact a technical service representative for more information. All products of animal origin manufactured by Rockland Immunochemicals are derived from starting materials of North American origin. Collection was performed in United States Department of Agriculture (USDA) inspected facilities and all materials have been inspected and certified to be free of disease and suitable for exportation. All properties listed are typical characteristics and are not specifications. All suggestions and data are offered in good faith but without guarantee as conditions and methods of use of our products are beyond our control. All claims must be made within 30 days following the date of delivery. The prospective user must determine the suitability of our materials before adopting them on a commercial scale. Suggested uses of our products are not recommendations to use our products in violation of any patent or as a license under any patent of Rockland Immunochemicals, Inc. If you require a commercial license to use this material and do not have one, then return this material, unopened to: Rockland Inc., P.O. BOX 5199, Limerick, Pennsylvania, USA.