

Datasheet for 600-401-C75

Dopamine Transporter Antibody

Overview

| | |
|----------------------|---|
| Description: | Anti-Dopamine Transporter (RABBIT) Antibody - 600-401-C75 |
| Item No.: | 600-401-C75 |
| Size: | 100 µL |
| Applications: | IHC, WB |
| Reactivity: | Human, Mouse, Non-Human Primates |
| Host Species: | Rabbit |

Product Details

| | |
|----------------------|---|
| Background: | Dopamine Transporter Antibody detects dopamine transporter (DAT) which is responsible for the reaccumulation of dopamine after it has been released. DAT antibodies and antibodies for other markers of catecholamine biosynthesis are widely used as markers for dopaminergic and noradrenergic neurons in a variety of applications including depression, schizophrenia, Parkinson's disease and drug abuse. Levels of DAT protein expression are altered by chronic drug administration. Anti-Dopamine Transporter Antibody is ideal for investigators involved in Neuroscience. |
| Synonyms: | Sodium-dependent dopamine transporter, DA transporter, DAT, Solute carrier family 6 member 3 |
| Host Species: | Rabbit |
| Clonality: | Polyclonal |
| Format: | IgG |

Target Details

| | |
|------------------------|--|
| Gene Name: | SLC6A3 |
| Reactivity: | Human, Mouse, Non-Human Primates |
| Immunogen Type: | Conjugated Peptide |
| Immunogen: | Anti-Dopamine Transporter Antibody was produced in rabbit by repeated immunizations with the synthetic peptide corresponding to the intracellular C-terminal region conjugated to KLH. |

Purity/Specificity: Anti-Dopamine Transporter antibody is directed against human dopamine transporter. Anti-Dopamine Transporter antibody was affinity purified from monospecific antiserum by immunoaffinity purification. Anti-Dopamine Transporter antibody recognizes Dopamine Transporter from human, mouse and NHP sources. Cross reactivity with Dopamine Transporter from other species has not been determined.

Relevant Links:

- [NCBI - NP_001035.1](#)
- [UniProtKB - Q01959](#)
- [GeneID - 6531](#)

Application Details

Tested Applications: IHC, WB

Application Note: Anti-Dopamine Transporter Antibody is tested for use in ELISA, Western Blotting and IHC. Specific conditions for reactivity should be optimized by the end user. Expect a band of approximately 88 kDa corresponding to DAT proteins in the appropriate cell lysate or extract.

Assay Dilutions: All assays should be optimized by the user. Recommended dilutions (if any) may be listed below.

ELISA: 1:10,000

IHC: 1:1000

WB: 1:1000

Formulation

Physical State: Liquid

Concentration: Each unit contains titrated antibody for 10 mini-western blots at suggested dilution Sufficient to run approximately 10 miniblots

Buffer: 0.01 M HEPES, 0.15 M Sodium Chloride, pH 7.5

Stabilizer: 0.1 mg/ml Bovine Serum Albumin (BSA) - IgG and Protease free, 50% (v/v) Glycerol

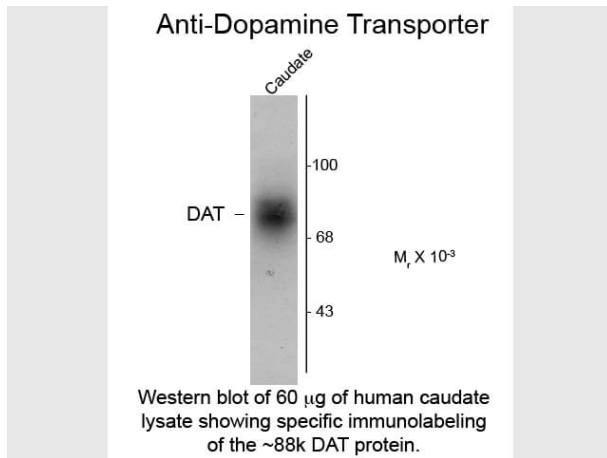
Shipping & Handling

Shipping Condition: Dry Ice

Storage Condition: Store vial at -20° C prior to opening. This product is stable at 4° C as an undiluted liquid. For extended storage, aliquot contents and freeze at -20° C or below. Avoid cycles of freezing and thawing. Dilute only prior to immediate use.

Expiration: Expiration date is one (1) year from date of receipt.

Images



Western Blot

Western Blot of Rabbit Anti-Dopamine Transporter C-Terminus Human Antibody. Lane 1: human caudate lysate. Lane 2: none. Load: 10 μ g per lane. Primary antibody: Dopamine Transporter antibody at 1:400 for overnight at 4°C. Secondary antibody: IRDye800™ rabbit secondary antibody at 1:10,000 for 45 min at RT. Block: 5% BLOTTO overnight at 4°C. Predicted/Observed size: ~88kDa/~88kDa for DAT protein. Other band(s): none.

References

- Russo EE et al. Evaluation and Validation of Commercially Available Dopamine Transporter Antibodies. *eNeuro*. (2023)

Disclaimer

This product is for research use only and is not intended for therapeutic or diagnostic applications. Please contact a technical service representative for more information. All products of animal origin manufactured by Rockland Immunochemicals are derived from starting materials of North American origin. Collection was performed in United States Department of Agriculture (USDA) inspected facilities and all materials have been inspected and certified to be free of disease and suitable for exportation. All properties listed are typical characteristics and are not specifications. All suggestions and data are offered in good faith but without guarantee as conditions and methods of use of our products are beyond our control. All claims must be made within 30 days following the date of delivery. The prospective user must determine the suitability of our materials before adopting them on a commercial scale. Suggested uses of our products are not recommendations to use our products in violation of any patent or as a license under any patent of Rockland Immunochemicals, Inc. If you require a commercial license to use this material and do not have one, then return this material, unopened to: Rockland Inc., P.O. BOX 5199, Limerick, Pennsylvania, USA.