

**Datasheet for 600-401-C05****Wnt10B Antibody****Overview**

<b>Description:</b>	Anti-Wnt10b (RABBIT) Antibody - 600-401-C05
<b>Item No.:</b>	600-401-C05
<b>Size:</b>	100 µg
<b>Applications:</b>	ELISA, IHC, WB
<b>Reactivity:</b>	Human, Mouse, Rat
<b>Host Species:</b>	Rabbit

**Product Details**

<b>Background:</b>	Wnt10b is a member of the Wnt family, a gene family that encodes secreted signaling proteins that play crucial roles in normal development such as regulation of cell fate and patterning during embryogenesis as well as neoplastic transformation. Wnt10b is found in the mouse mammary tumor virus insertion site where it is activated and causes mammary tumors. Elevated levels of Wnt10b have also been detected in human breast carcinomas. Wnt10b is known to be involved in adipogenesis, maintaining the preadipocyte in an undifferentiated state. More recently, Wnt10b has been shown to promote epithelial cell differentiation and hair shaft growth, demonstrating that Wnt10b has multiple roles in cell growth and differentiation. Anti-Wnt10b is ideal for investigators involved in cell cycle protein research.
<b>Synonyms:</b>	Wnt10b, Wingless-type MMTV integration site family 10b, Wnt12
<b>Host Species:</b>	Rabbit
<b>Clonality:</b>	Polyclonal
<b>Format:</b>	IgG

**Target Details**

<b>Gene Name:</b>	WNT10B
<b>Reactivity:</b>	Human, Mouse, Rat
<b>Immunogen Type:</b>	Conjugated Peptide
<b>Immunogen:</b>	WNT10b Antibody was produced from whole rabbit serum prepared by repeated immunizations with a peptide corresponding to an internal region of human Wnt10b.

**Purity/Specificity:** Anti-WNT10b Antibody was affinity purified from monospecific antiserum by immunoaffinity purification. A BLAST analysis was used to suggest cross-reactivity with WNT10b with Human, Rat and Mouse based on 100% homology with the immunizing sequence. Cross-reactivity with WNT10b from other sources has not been determined. Two isoforms of WNT10b are known to exist; this antibody will only recognize the longer isoforms. This WNT10b antibody will not cross-react with WNT10a.

**Relevant Links:**

- [UniProtKB - O00744](#)
- [NCBI - 16936522](#)
- [GeneID - 7480](#)

## Application Details

**Tested Applications:** ELISA, IHC, WB

**Application Note:** Wnt10b antibody has been tested in ELISA, WB, and IHC. Specific conditions for reactivity should be optimized by the end user. Expect a band at ~43 kDa in size corresponding to Wnt10b by Western blotting in the appropriate cell lysate or extract. Human skeletal muscle tissue lysate may be used as positive control.

**Assay Dilutions:** All assays should be optimized by the user. Recommended dilutions (if any) may be listed below.

**ELISA:** 1:10,000 - 1:40,000

**IHC:** 2.5 µg/mL

**WB:** 2.0 - 4.0 µg/mL

## Formulation

**Physical State:** Liquid (sterile filtered)

**Concentration:** 1.0 mg/mL by UV absorbance at 280 nm

**Buffer:** 0.02 M Potassium Phosphate, 0.15 M Sodium Chloride, pH 7.2

**Preservative:** 0.02% (w/v) Sodium Azide

**Stabilizer:** None

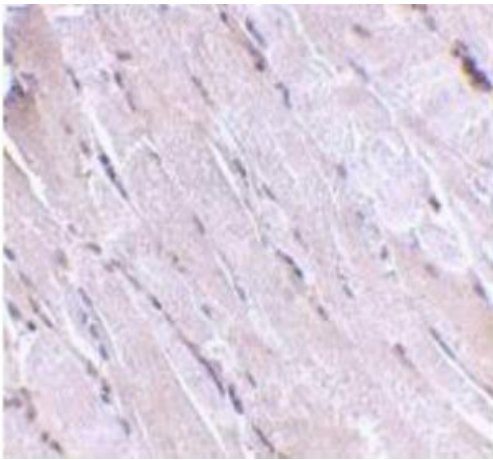
## Shipping & Handling

**Shipping Condition:** Dry Ice

**Storage Condition:** Store vial at -20° C prior to opening. Aliquot contents and freeze at -20° C or below for extended storage. Avoid cycles of freezing and thawing. Centrifuge product if not completely clear after standing at room temperature. This product is stable for several weeks at 4° C as an undiluted liquid. Dilute only prior to immediate use.

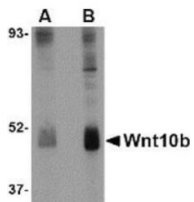
**Expiration:** Expiration date is one (1) year from date of receipt.

## Images



### Immunohistochemistry

Immunohistochemistry showing detection of Wnt10b in human skeletal muscle. Primary antibody anti-Wnt10b was used at 2.5 µg/mL.



### Western Blot

Western blot of Wnt10b Antibody. Lysate: human skeletal muscle. Primary antibody: Anti-Wnt10b at 2.0 µg/mL (Lane A); 4.0 µg/mL (Lane B). Secondary antibody: Peroxidase rabbit secondary antibody at 1:10,000 for 45 min at RT. Block: 5% BLOTTO overnight at 4°C.

## Disclaimer

This product is for research use only and is not intended for therapeutic or diagnostic applications. Please contact a technical service representative for more information. All products of animal origin manufactured by Rockland Immunochemicals are derived from starting materials of North American origin. Collection was performed in United States Department of Agriculture (USDA) inspected facilities and all materials have been inspected and certified to be free of disease and suitable for exportation. All properties listed are typical characteristics and are not specifications. All suggestions and data are offered in good faith but without guarantee as conditions and methods of use of our products are beyond our control. All claims must be made within 30 days following the date of delivery. The prospective user must determine the suitability of our materials before adopting them on a commercial scale. Suggested uses of our products are not recommendations to use our products in violation of any patent or as a license under any patent of Rockland Immunochemicals, Inc. If you require a commercial license to use this material and do not have one, then return this material, unopened to: Rockland Inc., P.O. BOX 5199, Limerick, Pennsylvania, USA.