

Datasheet for 600-401-BX6**IL-36RN Antibody****Overview**

Description:	Anti-IL-36RN (RABBIT) Antibody - 600-401-BX6
Item No.:	600-401-BX6
Size:	100 µg
Applications:	ELISA, IF, IHC, WB
Reactivity:	Human, Mouse
Host Species:	Rabbit

Product Details

Background:	IL-36RN is a member of the interleukin 1 cytokine family whose gene and eight other interleukin 1 family genes form a cytokine gene cluster on chromosome 2 (1). IL-36RN specifically inhibits the activation of NF-kappaB induced IL-36A (2). The opposing activities of these cytokines have been suggested to be involved in the regulation of skin inflammation (3). Like the IL-36 cytokines (IL-36A, IL-36B and IL-36G), IL-36RN requires post-translational processing for full agonist activity, but the cleavage mechanism is currently unknown (4).
Synonyms:	IL-36RN Antibody, FIL1, FIL1D, IL1F5, IL1L1, PSORP, IL1HY1, IL1RP3, IL36RA, FIL1(DELTA), UNQ1896/PRO4342, Interleukin-36 receptor antagonist protein, FIL1 delta, IL-1RP3
Host Species:	Rabbit
Clonality:	Polyclonal
Format:	IgG

Target Details

Gene Name:	IL36RN
Reactivity:	Human, Mouse
Immunogen Type:	Conjugated Peptide
Immunogen:	Anti-IL-36RN antibody was prepared from whole rabbit serum produced by repeated immunizations with a 19 amino acid peptide near the C-terminus of human IL-36RN.

Purity/Specificity: Anti-IL-36RN antibody was affinity purified from monospecific antiserum by immunoaffinity chromatography. IL-36RN antibody is human specific. At least two isoforms of IL-36RN are known to exist

Relevant Links:

- [UniProtKB - Q9UBH0](#)
- [GeneID - 26525](#)
- [NCBI - NP_775262](#)

Application Details

Tested Applications: ELISA, IF, IHC, WB

Application Note: Anti-IL-36RN Antibody has been tested for use in ELISA, Western Blotting, Immunohistochemistry and Immunofluorescence. Specific conditions for reactivity should be optimized by the end user. Expect a band at approximately 17 kDa in Western Blots of specific cell lysates and tissues.

Assay Dilutions: All assays should be optimized by the user. Recommended dilutions (if any) may be listed below.

ELISA: 1:10,000 - 1:20,000

IF: User Optimized

IHC: User Optimized

WB: 1-2 µg/mL

Formulation

Physical State: Liquid (sterile filtered)

Concentration: 1.0 mg/mL by UV absorbance at 280 nm

Buffer: 0.01 M Sodium Phosphate, 0.25 M Sodium Chloride, pH 7.2

Preservative: 0.02% (w/v) Sodium Azide

Stabilizer: None

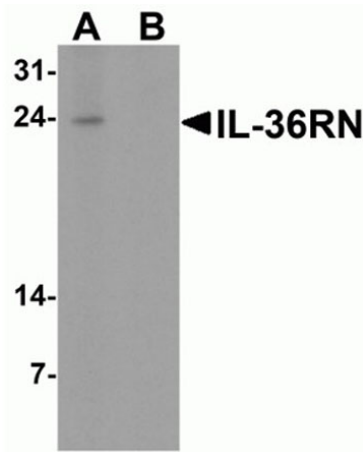
Shipping & Handling

Shipping Condition: Wet Ice

Storage Condition: Antibody can be stored at 4°C up to one year. Antibodies should not be exposed to prolonged high temperatures.

Expiration: Expiration date is one (1) year from date of receipt.

Images

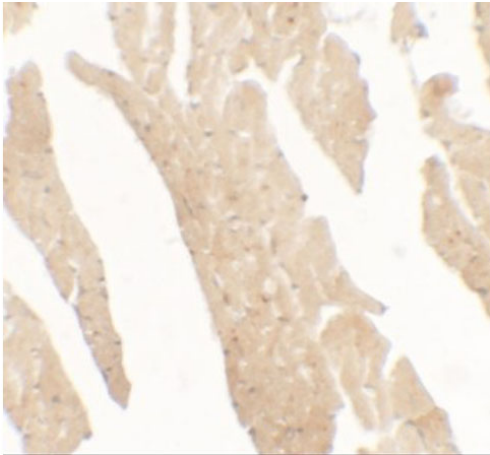


Western Blot

Western blot of IL-36RN.

Load: human spleen tissue lysate.

Primary Antibody: IL-36RN antibody at 1 $\mu\text{g}/\text{ml}$ in (A) the absence and (B) the presence of blocking peptide.

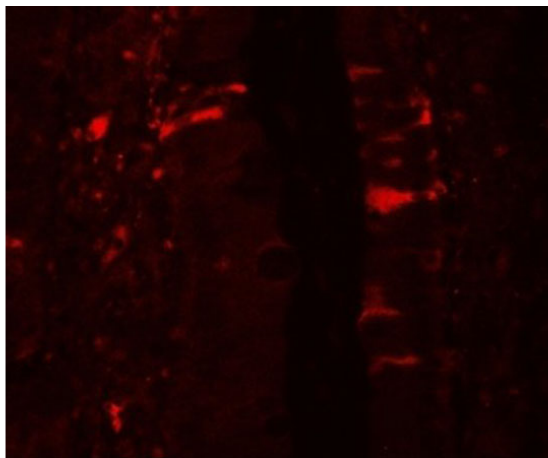


Immunohistochemistry

Immunohistochemistry of IL-36RN.

Tissue: rat small intestine tissue.

Primary Antibody: IL-36RN antibody at 5 $\mu\text{g}/\text{mL}$.

**Immunofluorescence Microscopy**

Immunofluorescence of IL-36RN.

Tissue: rat small intestine tissue.

Primary Antibody: IL-36RN antibody at 20 $\mu\text{g}/\text{mL}$.

Disclaimer

This product is for research use only and is not intended for therapeutic or diagnostic applications. Please contact a technical service representative for more information. All products of animal origin manufactured by Rockland Immunochemicals are derived from starting materials of North American origin. Collection was performed in United States Department of Agriculture (USDA) inspected facilities and all materials have been inspected and certified to be free of disease and suitable for exportation. All properties listed are typical characteristics and are not specifications. All suggestions and data are offered in good faith but without guarantee as conditions and methods of use of our products are beyond our control. All claims must be made within 30 days following the date of delivery. The prospective user must determine the suitability of our materials before adopting them on a commercial scale. Suggested uses of our products are not recommendations to use our products in violation of any patent or as a license under any patent of Rockland Immunochemicals, Inc. If you require a commercial license to use this material and do not have one, then return this material, unopened to: Rockland Inc., P.O. BOX 5199, Limerick, Pennsylvania, USA.