

Datasheet for 600-401-BX5**IL-36G Antibody****Overview**

Description:	Anti-IL-36G (RABBIT) Antibody - 600-401-BX5
Item No.:	600-401-BX5
Size:	100 µg
Applications:	ELISA, IF, IHC, WB
Reactivity:	Human
Host Species:	Rabbit

Product Details

Background:	IL-36G is a member of the interleukin 1 cytokine family whose gene and eight other interleukin 1 family genes form a cytokine gene cluster on chromosome 2 (1). IL-36G is thought to activate the NF-kappaB pathway through IL-1 receptor family members IL-1RL2 and IL-1RAcP (2). Like the related proteins IL-36A and IL-36B, IL-36G requires post-translational processing for full agonist activity, but the cleavage mechanism is currently unknown (3). IL-36G expression is stimulated by interferon-gamma, tumor necrosis factor-alpha and interleukin 1 (4). The IL-36 cytokines have been suggested to amplify Th1 responses by enhancing proliferation and Th1 polarization of naive CD4+ T cells (5).
Synonyms:	IL-36G Antibody, IL1E, IL1F9, IL1H1, IL-1F9, IL-1H1, IL1RP2, IL-1RP2, IL1E, UNQ2456/PRO5737, Interleukin-36 gamma, IL-1-related protein 2
Host Species:	Rabbit
Clonality:	Polyclonal
Format:	IgG

Target Details

Gene Name:	IL36G
Reactivity:	Human
Immunogen Type:	Conjugated Peptide
Immunogen:	Anti-IL-36G antibody was prepared from whole rabbit serum produced by repeated immunizations with a 13 amino acid peptide near the C-terminus of human IL-36G.

Purity/Specificity: Anti-IL-36G antibody was affinity purified from monospecific antiserum by immunoaffinity chromatography. IL-36G antibody is human specific. IL-36G antibody will not cross-react with IL-36A or IL-36B.

Relevant Links:

- [UniProtKB - Q9NZH8](#)
- [GeneID - 56300](#)
- [NCBI - NP_062564](#)

Application Details

Tested Applications: ELISA, IF, IHC, WB

Application Note: Anti-IL-36G Antibody has been tested for use in ELISA, Western Blotting, Immunohistochemistry and Immunofluorescence. Specific conditions for reactivity should be optimized by the end user. Expect a band at approximately 19 kDa in Western Blots of specific cell lysates and tissues.

Assay Dilutions: All assays should be optimized by the user. Recommended dilutions (if any) may be listed below.

ELISA: 1:10,000-1:20,000

IF: User Optimized

IHC: User Optimized

WB: 1-2 µg/mL

Formulation

Physical State: Liquid (sterile filtered)

Concentration: 1.0 mg/mL by UV absorbance at 280 nm

Buffer: 0.01 M Sodium Phosphate, 0.25 M Sodium Chloride, pH 7.2

Preservative: 0.02% (w/v) Sodium Azide

Stabilizer: None

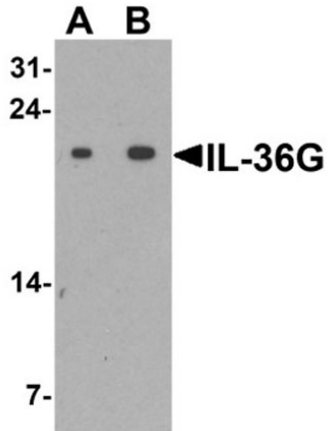
Shipping & Handling

Shipping Condition: Dry Ice

Storage Condition: Store vial at -20° C prior to opening. Aliquot contents and freeze at -20° C or below for extended storage. Avoid cycles of freezing and thawing. Centrifuge product if not completely clear after standing at room temperature. This product is stable for several weeks at 4° C as an undiluted liquid. Dilute only prior to immediate use.

Expiration: Expiration date is one (1) year from date of receipt.

Images

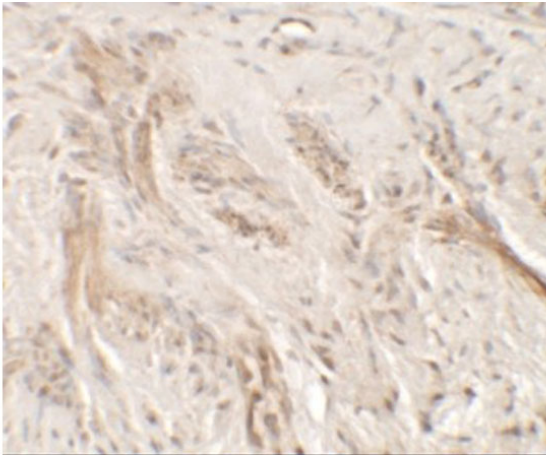


Western Blot

Western blot of IL-36G.

Load: human spleen tissue lysate.

Primary Antibody: IL-36G antibody at (A) 1 and (B) 2 $\mu\text{g/ml}$.

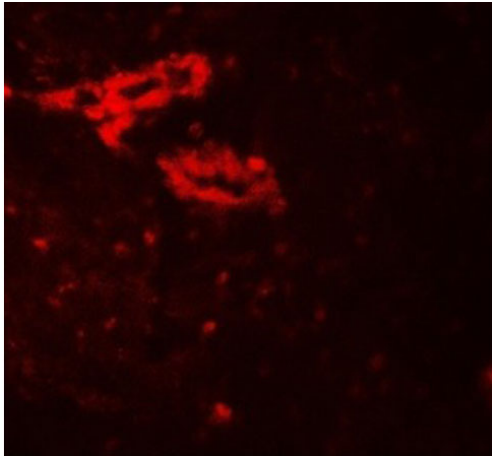


Immunohistochemistry

Immunohistochemistry of IL-36G.

Tissue: human bladder tissue.

Primary Antibody: IL-36G antibody at 5 $\mu\text{g/mL}$.

**Immunofluorescence Microscopy**

Immunofluorescence of IL-36G.

Tissue: human bladder tissue.

Primary Antibody: IL-36G antibody at 20 µg/mL.

Disclaimer

This product is for research use only and is not intended for therapeutic or diagnostic applications. Please contact a technical service representative for more information. All products of animal origin manufactured by Rockland Immunochemicals are derived from starting materials of North American origin. Collection was performed in United States Department of Agriculture (USDA) inspected facilities and all materials have been inspected and certified to be free of disease and suitable for exportation. All properties listed are typical characteristics and are not specifications. All suggestions and data are offered in good faith but without guarantee as conditions and methods of use of our products are beyond our control. All claims must be made within 30 days following the date of delivery. The prospective user must determine the suitability of our materials before adopting them on a commercial scale. Suggested uses of our products are not recommendations to use our products in violation of any patent or as a license under any patent of Rockland Immunochemicals, Inc. If you require a commercial license to use this material and do not have one, then return this material, unopened to: Rockland Inc., P.O. BOX 5199, Limerick, Pennsylvania, USA.