

Datasheet for 600-401-BW3**IL-28B Antibody****Overview**

Description:	Anti-IL-28B (RABBIT) Antibody - 600-401-BW3
Item No.:	600-401-BW3
Size:	100 µg
Applications:	ELISA, IF, WB
Reactivity:	Human
Host Species:	Rabbit

Product Details

Background:	Interleukin 28 (IL-28B), also known as interferon lambda 3, is cytokine distantly related to type I interferons and the IL-10 family (1). The IL-28B gene and the closely related cytokine genes IL-28A and IL-29 form a cytokine gene cluster on a chromosomal region mapped to 19q13. Expression of the cytokines encoded by the three genes can be induced by viral infection and can induce anti-viral activity (2,3). All three cytokines have been shown to interact with a heterodimeric class II cytokine receptor that consists of interleukin 10 receptor-beta (IL10RB) and interleukin 28 receptor- alpha (IL28RA) (1).
Synonyms:	IL-28B Antibody , IL28B, IL28C, IL-28B, IL28B, ZCYTO22, Interferon lambda-3, Cytokine Zcyto22, IFN-lambda-3
Host Species:	Rabbit
Clonality:	Polyclonal
Format:	IgG

Target Details

Gene Name:	IFNL3
Reactivity:	Human
Immunogen Type:	Conjugated Peptide
Immunogen:	Anti-IL-28B antibody was prepared from whole rabbit serum produced by repeated immunizations with a 17 amino acid peptide near the internal region of human IL-28B.

Purity/Specificity: Anti-IL-28B Antibody was affinity purified from monospecific antiserum by immunoaffinity chromatography. IL-28B antibody is human specific. IL-28B antibody may cross-react with IL-28A and IL-29.

Relevant Links:

- [UniProtKB - Q8IZI9](#)
- [GeneID - 282617](#)
- [NCBI - NP_742151](#)

Application Details

Tested Applications: ELISA, IF, WB

Application Note: Anti-IL-28B Antibody has been tested for use in ELISA, Western Blotting and Immunofluorescence. Specific conditions for reactivity should be optimized by the end user. Expect a band at approximately 22 kDa in Western Blots of specific cell lysates and tissues.

Assay Dilutions: All assays should be optimized by the user. Recommended dilutions (if any) may be listed below.

ELISA: User Optimized

IF: User Optimized

WB: User Optimized

Formulation

Physical State: Liquid (sterile filtered)

Concentration: 1.0 mg/mL by UV absorbance at 280 nm

Buffer: 0.01 M Sodium Phosphate, 0.25 M Sodium Chloride, pH 7.2

Preservative: 0.02% (w/v) Sodium Azide

Stabilizer: None

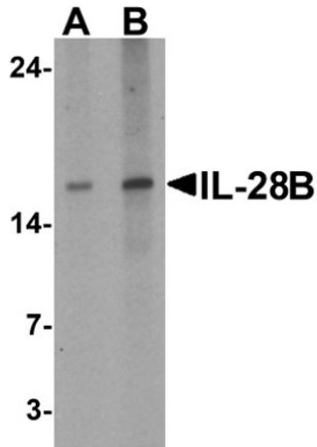
Shipping & Handling

Shipping Condition: Dry Ice

Storage Condition: Store vial at -20° C prior to opening. Aliquot contents and freeze at -20° C or below for extended storage. Avoid cycles of freezing and thawing. Centrifuge product if not completely clear after standing at room temperature. This product is stable for several weeks at 4° C as an undiluted liquid. Dilute only prior to immediate use.

Expiration: Expiration date is one (1) year from date of receipt.

Images

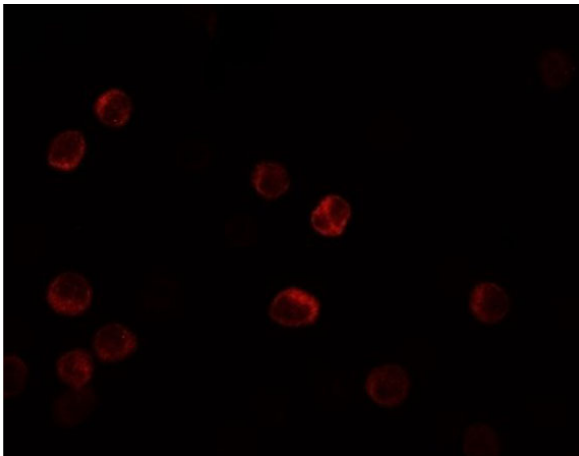


Western Blot

Western blot of IL-28B.

Load: HeLa cell lysate.

Primary Antibody: IL-28B antibody at (A) 1 and (B) 2 µg/ml.



Immunofluorescence Microscopy

Immunofluorescence of IL-28B.

Cell: HeLa cells.

Primary Antibody: IL-28B antibody at 5 µg/mL.

Disclaimer

This product is for research use only and is not intended for therapeutic or diagnostic applications. Please contact a technical service representative for more information. All products of animal origin manufactured by Rockland Immunochemicals are derived from starting materials of North American origin. Collection was performed in United States Department of Agriculture (USDA) inspected facilities and all materials have been inspected and certified to be free of disease and suitable for exportation. All properties listed are typical characteristics and are not specifications. All suggestions and data are offered in good faith but without guarantee as conditions and methods of use of our products are beyond our control. All claims must be made within 30 days following the date of delivery. The prospective user must determine the suitability of our materials before adopting them on a commercial scale. Suggested uses of our products are not recommendations to use our products in violation of any patent or as a license under any patent of Rockland Immunochemicals, Inc. If you require a commercial license to use this material and do not have one, then return this material, unopened to: Rockland Inc., P.O. BOX 5199, Limerick, Pennsylvania, USA.