

Datasheet for 600-401-BV8

IL-22 Receptor Antibody**Overview**

| | |
|----------------------|---|
| Description: | Anti-IL-22 Receptor (RABBIT) Antibody - 600-401-BV8 |
| Item No.: | 600-401-BV8 |
| Size: | 100 µg |
| Applications: | ELISA, WB |
| Reactivity: | Human, Rat |
| Host Species: | Rabbit |

Product Details

| | |
|----------------------|--|
| Background: | A novel cytokine, designated IL-TIF for IL-10 related T cell-derived inducible factor and IL-22, was recently identified. The receptor for IL-22 (IL-22R, also termed CRF2-9 and IL-TIF-R1 chain) is a new member of the class II cytokine receptor family. IL-22R forms a complex with IL-10 receptor beta chain and mediates IL-22 signaling. IL-22 and its receptor activate JAK-STAT signaling pathway. IL22R is expressed in normal liver and kidney and their cell lines HepG2 and TK-10. A soluble form of IL-22 receptor, also termed IL-22 binding protein (IL-22BP) and IL-22 receptor-alpha 2 (IL-22RA2), was identified very recently. IL-22BP prevents binding of IL-22 to the functional cell surface IL-22R complex and neutralizes IL-22 activity. LPS induces IL-22 expression, which indicates the role of IL-22 in inflammatory response. |
| Synonyms: | IL-22 Receptor Antibody, IL22R, CRF2-9, IL22R1, IL22R, Interleukin-22 receptor subunit alpha-1, Cytokine receptor class-II member 9, IL-22 receptor subunit alpha-1 |
| Host Species: | Rabbit |
| Clonality: | Polyclonal |
| Format: | IgG |

Target Details

| | |
|------------------------|--------------------|
| Gene Name: | IL22RA1 |
| Reactivity: | Human, Rat |
| Immunogen Type: | Conjugated Peptide |

| | |
|----------------------------|---|
| Immunogen: | Anti-IL-22 receptor antibody was prepared from whole rabbit serum produced by repeated immunizations with a 15 amino acid peptide near the C-terminus of human IL-22. |
| Purity/Specificity: | Anti-IL-22 Receptor Antibody was affinity purified from monospecific antiserum by immunoaffinity chromatography. Cross reactivity with IL-22 Receptor from other sources has not been determined. |
| Relevant Links: | <ul style="list-style-type: none">• UniProtKB - Q8N6P7• GeneID - 58985• NCBI - AF286095 |

Application Details

| | |
|-----------------------------|--|
| Tested Applications: | ELISA, WB |
| Application Note: | Anti-IL-22 Receptor Antibody has been tested for use in ELISA and Western Blotting. Specific conditions for reactivity should be optimized by the end user. Expect a band at approximately 63 kDa in Western Blots of specific cell lysates and tissues. |
| Assay Dilutions: | All assays should be optimized by the user. Recommended dilutions (if any) may be listed below. |
| ELISA: | 1:10,000 |
| WB: | 1 µg/mL |

Formulation

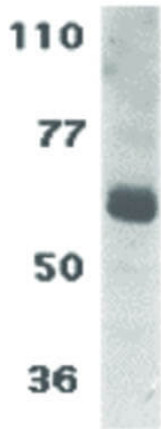
| | |
|------------------------|---|
| Physical State: | Liquid (sterile filtered) |
| Concentration: | 1.0 mg/mL by UV absorbance at 280 nm |
| Buffer: | 0.01 M Sodium Phosphate, 0.25 M Sodium Chloride, pH 7.2 |
| Preservative: | 0.02% (w/v) Sodium Azide |
| Stabilizer: | None |

Shipping & Handling

| | |
|----------------------------|---|
| Shipping Condition: | Dry Ice |
| Storage Condition: | Store vial at -20° C prior to opening. Aliquot contents and freeze at -20° C or below for extended storage. Avoid cycles of freezing and thawing. Centrifuge product if not completely clear after standing at room temperature. This product is stable for several weeks at 4° C as an undiluted liquid. Dilute only prior to immediate use. |

Expiration: Expiration date is one (1) year from date of receipt.

Images



Western Blot

Western Blot of IL-22 Receptor antibody. Lane 1: Human HepG2 cell lysate. Load: 35 µg per lane. Primary antibody: IL-22 Receptor antibody at 1 µg/mL for overnight at 4°C. Secondary antibody: Peroxidase rabbit secondary antibody at 1:10,000 for 45 min at RT. Block: 5% BLOTTO overnight at 4°C. Predicted/Observed size: 63 kDa, 63 kDa for IL-22 Receptor.

Disclaimer

This product is for research use only and is not intended for therapeutic or diagnostic applications. Please contact a technical service representative for more information. All products of animal origin manufactured by Rockland Immunochemicals are derived from starting materials of North American origin. Collection was performed in United States Department of Agriculture (USDA) inspected facilities and all materials have been inspected and certified to be free of disease and suitable for exportation. All properties listed are typical characteristics and are not specifications. All suggestions and data are offered in good faith but without guarantee as conditions and methods of use of our products are beyond our control. All claims must be made within 30 days following the date of delivery. The prospective user must determine the suitability of our materials before adopting them on a commercial scale. Suggested uses of our products are not recommendations to use our products in violation of any patent or as a license under any patent of Rockland Immunochemicals, Inc. If you require a commercial license to use this material and do not have one, then return this material, unopened to: Rockland Inc., P.O. BOX 5199, Limerick, Pennsylvania, USA.