

Datasheet for 600-401-BV6**IL-21 Receptor Antibody****Overview**

Description:	Anti-IL-21 Receptor (RABBIT) Antibody - 600-401-BV6
Item No.:	600-401-BV6
Size:	100 µg
Applications:	ELISA, IF, WB
Reactivity:	Human, Mouse, Rat
Host Species:	Rabbit

Product Details

Background:	A novel cytokine related to IL2 and IL15 was recently identified and designated IL-21. The receptor for IL-21 (IL-21R, also termed NILR for novel Interleukin receptor) is a new member of the class I cytokine receptor family. IL-21R forms a complex with the common cytokine receptor gamma chain, gammac, and mediates IL-21 signaling. Both IL-21R and the gc are necessary for the IL-21 function. IL-21 and its receptor activate JAK-STAT signaling pathway. IL-21R is expressed in spleen, thymus, natural killer (NK), T and B cell lines. IL-21 plays a role in the proliferation and maturation of NK, B and T cell populations.
Synonyms:	IL-21 Receptor Antibody, NILR, CD360, NILR, UNQ3121/PRO10273, Interleukin-21 receptor, Novel interleukin receptor, IL-21 receptor
Host Species:	Rabbit
Clonality:	Polyclonal
Format:	IgG

Target Details

Gene Name:	IL21R
Reactivity:	Human, Mouse, Rat
Immunogen Type:	Conjugated Peptide
Immunogen:	Anti-IL-21 receptor antibody was prepared from whole rabbit serum produced by repeated immunizations with a synthetic peptide corresponding to amino acids 20 to 32 of human IL-21 receptor precursor.

Purity/Specificity: Anti-IL-21 Receptor Antibody was affinity purified from monospecific antiserum by immunoaffinity chromatography. Cross reactivity with IL-21 Receptor from other sources has not been determined.

Relevant Links:

- [UniProtKB - Q9HBE5](#)
- [GeneID - 50615](#)
- [NCBI - NP_068570](#)

Application Details

Tested Applications: ELISA, IF, WB

Application Note: Anti-IL-21 Receptor Antibody has been tested for use in ELISA, immunofluorescence, and Western Blotting. Specific conditions for reactivity should be optimized by the end user. Expect a band at approximately 59 kDa in Western Blots of specific cell lysates and tissues.

Assay Dilutions: All assays should be optimized by the user. Recommended dilutions (if any) may be listed below.

ELISA: 1:10,000

IF: 20µg/mL

WB: 1 µg/mL

Formulation

Physical State: Liquid (sterile filtered)

Concentration: 1 mg/mL by UV absorbance at 280 nm

Buffer: 0.01 M Sodium Phosphate, 0.25 M Sodium Chloride, pH 7.2

Preservative: 0.02% (w/v) Sodium Azide

Stabilizer: None

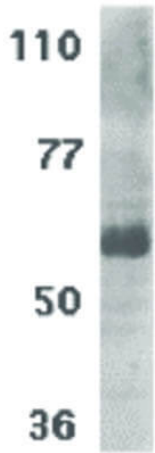
Shipping & Handling

Shipping Condition: Dry Ice

Storage Condition: Store vial at -20° C prior to opening. Aliquot contents and freeze at -20° C or below for extended storage. Avoid cycles of freezing and thawing. Centrifuge product if not completely clear after standing at room temperature. This product is stable for several weeks at 4° C as an undiluted liquid. Dilute only prior to immediate use.

Expiration: Expiration date is one (1) year from date of receipt.

Images



Western Blot

Western Blot of IL-21 receptor antibody. Lane 1: Raji cell lysate. Load: 35 μ g per lane. Primary antibody: IL-21 receptor antibody at 1 μ g/mL for overnight at 4°C. Secondary antibody: Peroxidase rabbit secondary antibody at 1:10,000 for 45 min at RT. Block: 5% BLOTTO overnight at 4°C. Predicted/Observed size: 59.1 kDa, 70 kDa for IL-21 receptor.

Disclaimer

This product is for research use only and is not intended for therapeutic or diagnostic applications. Please contact a technical service representative for more information. All products of animal origin manufactured by Rockland Immunochemicals are derived from starting materials of North American origin. Collection was performed in United States Department of Agriculture (USDA) inspected facilities and all materials have been inspected and certified to be free of disease and suitable for exportation. All properties listed are typical characteristics and are not specifications. All suggestions and data are offered in good faith but without guarantee as conditions and methods of use of our products are beyond our control. All claims must be made within 30 days following the date of delivery. The prospective user must determine the suitability of our materials before adopting them on a commercial scale. Suggested uses of our products are not recommendations to use our products in violation of any patent or as a license under any patent of Rockland Immunochemicals, Inc. If you require a commercial license to use this material and do not have one, then return this material, unopened to: Rockland Inc., P.O. BOX 5199, Limerick, Pennsylvania, USA.