

**Datasheet for 600-401-BU8****IL-17 Antibody****Overview**

<b>Description:</b>	Anti-IL-17 (RABBIT) Antibody - 600-401-BU8
<b>Item No.:</b>	600-401-BU8
<b>Size:</b>	100 µg
<b>Applications:</b>	ELISA, IF, IHC, WB
<b>Reactivity:</b>	Human, Mouse
<b>Host Species:</b>	Rabbit

**Product Details**

<b>Background:</b>	Interleukin 17 (IL-17) is a family of pro-inflammatory cytokines produced by activated T cells and is thought to have a major role in the initiation and perpetuation of rheumatoid arthritis. IL-17 regulates the activities of NF-κB and mitogen-activated protein kinases such as ERK and JNK. In addition, IL-17 stimulates the expression of IL-6 and cyclooxygenase-2 and enhances the production of nitric oxide. IL-17-producing T helper cells (TH-17 cells) have been the subject of much attention due to the importance of IL-17 in the pathogenesis of autoimmune inflammation. Because of its role in autoimmune diseases, it is thought that targeting the production and action of IL-17 would be beneficial therapeutically in these diseases.
<b>Synonyms:</b>	IL-17 Antibody, IL17, CTLA8, IL-17, IL-17A, IL17, Interleukin-17A, Cytotoxic T-lymphocyte-associated antigen 8
<b>Host Species:</b>	Rabbit
<b>Clonality:</b>	Polyclonal
<b>Format:</b>	IgG

**Target Details**

<b>Gene Name:</b>	IL17A
<b>Reactivity:</b>	Human, Mouse
<b>Immunogen Type:</b>	Conjugated Peptide

<b>Immunogen:</b>	Anti-IL-17 antibody was prepared from whole rabbit serum produced by repeated immunizations with a 19 amino acid synthetic peptide from near the internal region of human IL-17A.
<b>Purity/Specificity:</b>	Anti-IL-17 Antibody was affinity purified from monospecific antiserum by immunoaffinity chromatography. Cross reactivity with IL-17 from other sources has not been determined.
<b>Relevant Links:</b>	<ul style="list-style-type: none"><li>• <a href="#">UniProtKB - Q16552</a></li><li>• <a href="#">GeneID - 3605</a></li><li>• <a href="#">NCBI - NP_002181</a></li></ul>

## Application Details

<b>Tested Applications:</b>	ELISA, IF, IHC, WB
<b>Application Note:</b>	Anti-IL-17 Antibody has been tested for use in ELISA, immunohistochemistry, immunofluorescence, and Western Blotting. Expect a band at approximately 18 kDa in Western Blots using positive control human thymus tissue, or other specific cell lysates and tissues. Specific conditions for reactivity should be optimized by the end user.
<b>Assay Dilutions:</b>	All assays should be optimized by the user. Recommended dilutions (if any) may be listed below.
<b>ELISA:</b>	1:10,000 - 1:20,000
<b>IF:</b>	5 µg/mL
<b>IHC:</b>	2 µg/mL
<b>WB:</b>	1-2 µg/mL

## Formulation

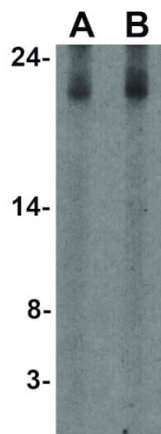
<b>Physical State:</b>	Liquid (sterile filtered)
<b>Concentration:</b>	1 mg/mL by UV absorbance at 280 nm
<b>Buffer:</b>	0.01 M Sodium Phosphate, 0.25 M Sodium Chloride, pH 7.2
<b>Preservative:</b>	0.02% (w/v) Sodium Azide
<b>Stabilizer:</b>	None

## Shipping & Handling

<b>Shipping Condition:</b>	Wet Ice
----------------------------	---------

<b>Storage Condition:</b>	Antibody can be stored at 4°C up to one year. Antibodies should not be exposed to prolonged high temperatures.
<b>Expiration:</b>	Expiration date is one (1) year from date of receipt.

## Images



### Western Blot

Western Blot of IL-17 antibody. Lane A: Human thymus tissue lysate at 1 µg/ml. Lane B: Human thymus tissue lysate at 2 µg/ml. Load: 35 µg per lane. Secondary antibody: Peroxidase rabbit secondary antibody at 1:10,000 for 45 min at RT. Block: 5% BLOTTO overnight at 4°C. Predicted/Observed size: 17.5 kDa, ~18 kDa for IL-17.

## Disclaimer

This product is for research use only and is not intended for therapeutic or diagnostic applications. Please contact a technical service representative for more information. All products of animal origin manufactured by Rockland Immunochemicals are derived from starting materials of North American origin. Collection was performed in United States Department of Agriculture (USDA) inspected facilities and all materials have been inspected and certified to be free of disease and suitable for exportation. All properties listed are typical characteristics and are not specifications. All suggestions and data are offered in good faith but without guarantee as conditions and methods of use of our products are beyond our control. All claims must be made within 30 days following the date of delivery. The prospective user must determine the suitability of our materials before adopting them on a commercial scale. Suggested uses of our products are not recommendations to use our products in violation of any patent or as a license under any patent of Rockland Immunochemicals, Inc. If you require a commercial license to use this material and do not have one, then return this material, unopened to: Rockland Inc., P.O. BOX 5199, Limerick, Pennsylvania, USA.