

Datasheet for 600-401-BT5**IFITM1 Antibody****Overview**

Description:	Anti-IFITM1 (RABBIT) Antibody - 600-401-BT5
Item No.:	600-401-BT5
Size:	100 µg
Applications:	ELISA, IF, IHC, WB
Reactivity:	Human, Mouse, Rat
Host Species:	Rabbit

Product Details

Background:	IFITM1 (Interferon inducible transmembrane protein 1) is a member of the IFN-inducible transmembrane protein family. It is an essential mediator of interferon-gamma-induced antiproliferation and plays a role in the control of cell growth. IFITM1 is upregulated in several tumor types and may be useful as a tumor biomarker. Both mouse IFITM1 and IFITM3 are expressed on the cell surfaces of primordial germ cells in a developmentally-regulated manner. IFITM1 activity is required for primordial germ cell transit, and IFITM1 acts as a repulsive molecule by repelling non-IFITM1-expressing primordial germ cells from the mesoderm into the endoderm.
Synonyms:	IFITM1 Antibody, 9-27, CD225, IFI17, LEU13, DSPA2a, Interferon-induced transmembrane protein 1, Dispanin subfamily A member 2a
Host Species:	Rabbit
Clonality:	Polyclonal
Format:	IgG

Target Details

Gene Name:	IFITM1
Reactivity:	Human, Mouse, Rat
Immunogen Type:	Conjugated Peptide

Immunogen:	Anti-IFITM1 antibody was prepared from whole rabbit serum produced by repeated immunizations with a 16 amino acid synthetic peptide near the internal region of human IFITM1.
Purity/Specificity:	Anti-IFITM1 Antibody was affinity purified from monospecific antiserum by immunoaffinity chromatography. Cross reactivity with IFITM1 from other sources has not been determined.
Relevant Links:	<ul style="list-style-type: none">• UniProtKB - P13164• GeneID - 8519• NCBI - NP_003632

Application Details

Tested Applications:	ELISA, IF, IHC, WB
Application Note:	Anti-IFITM1 Antibody has been tested for use in ELISA, Western Blotting, Immunocytochemistry and Immunofluorescence. Specific conditions for reactivity should be optimized by the end user. Expect a band at approximately 14 kDa in Western Blots of specific cell lysates and tissues.
Assay Dilutions:	All assays should be optimized by the user. Recommended dilutions (if any) may be listed below.
ELISA:	1:10,000 - 1:20,000
IF:	20 µg/mL
WB:	1-2 µg/mL

Formulation

Physical State:	Liquid (sterile filtered)
Concentration:	1 mg/mL by UV absorbance at 280 nm
Buffer:	0.01 M Sodium Phosphate, 0.25 M Sodium Chloride, pH 7.2
Preservative:	0.02% (w/v) Sodium Azide
Stabilizer:	None

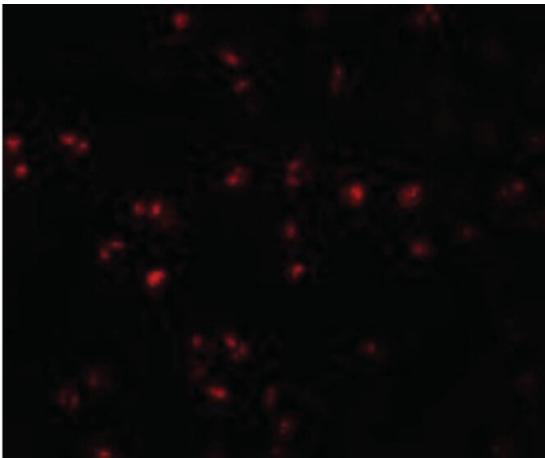
Shipping & Handling

Shipping Condition:	Dry Ice
----------------------------	---------

Storage Condition: Store vial at -20° C prior to opening. Aliquot contents and freeze at -20° C or below for extended storage. Avoid cycles of freezing and thawing. Centrifuge product if not completely clear after standing at room temperature. This product is stable for several weeks at 4° C as an undiluted liquid. Dilute only prior to immediate use.

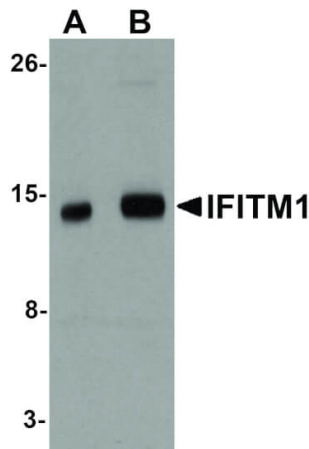
Expiration: Expiration date is one (1) year from date of receipt.

Images



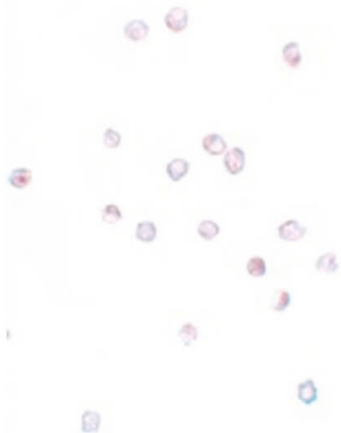
Immunofluorescence Microscopy

Immunofluorescence Microscopy of IFITM1 antibody.
Tissue: Jurkat cell. Fixation: 0.5% PFA. Antigen retrieval: not required. Primary antibody: IFITM1 antibody at 20 µg/mL for 1 h at RT. Secondary antibody: Fluorescein rabbit secondary antibody at 1:10,000 for 45 min at RT.
Localization: IFITM1 is a membrane protein. Staining: IFITM1 as red fluorescent signal.



Western Blot

Western Blot of IFITM1 antibody. Lane 1: 3T3 cell lysate with IFITM1 antibody at 1 µg/mL. Lane 2: 3T3 cell lysate with IFITM1 antibody at 2 µg/mL. Secondary antibody: Peroxidase rabbit secondary antibody at 1:10,000 for 45 min at RT. Block: 5% BLOTTO overnight at 4°C.
Predicted/Observed size: 14 kDa, 14 kDa for IFITM1. Other band(s): IFITM1 splice variants and isoforms.



Immunohistochemistry

Immunocytochemistry of IFITM1 antibody. Tissue: Jurkat cells. Fixation: formalin fixed paraffin embedded. Antigen retrieval: not required. Primary antibody: IFITM1 antibody at 20 µg/mL for 1 h at RT. Secondary antibody: Peroxidase rabbit secondary antibody at 1:10,000 for 45 min at RT. Localization: IFITM1 is a membrane protein. Staining: IFITM1 as precipitated blue signal with pink nuclear counterstain.

Disclaimer

This product is for research use only and is not intended for therapeutic or diagnostic applications. Please contact a technical service representative for more information. All products of animal origin manufactured by Rockland Immunochemicals are derived from starting materials of North American origin. Collection was performed in United States Department of Agriculture (USDA) inspected facilities and all materials have been inspected and certified to be free of disease and suitable for exportation. All properties listed are typical characteristics and are not specifications. All suggestions and data are offered in good faith but without guarantee as conditions and methods of use of our products are beyond our control. All claims must be made within 30 days following the date of delivery. The prospective user must determine the suitability of our materials before adopting them on a commercial scale. Suggested uses of our products are not recommendations to use our products in violation of any patent or as a license under any patent of Rockland Immunochemicals, Inc. If you require a commercial license to use this material and do not have one, then return this material, unopened to: Rockland Inc., P.O. BOX 5199, Limerick, Pennsylvania, USA.