

Datasheet for 600-401-BR2**HIG1 Antibody****Overview**

Description:	Anti-HIG1 (RABBIT) Antibody - 600-401-BR2
Item No.:	600-401-BR2
Size:	100 µg
Applications:	ELISA, IF, IHC, WB
Reactivity:	Human
Host Species:	Rabbit

Product Details

Background:	HIG1 and HIG2 (Hypoxia-inducible gene 1 and 2, respectively) are known to be induced by hypoxic conditions. HIG1 is induced by hypoxia and by glucose deprivation in cultured cells. In addition, tumor xenografts derived from human cervical cancer cells display increased expression of HIG1 and HIG2 when they are deprived of oxygen. Unlike HIG2, which is ubiquitously expressed and might be an activator and target of the canonical Wnt pathway, the function and the mechanisms underlying its regulation of HIG1 still remained unknown. The putative link between hypoxia and an oncogenic signaling pathway might play an important role in tumorigenesis.
Synonyms:	HIG1 Antibody, HIG1, RCF1a, HIG1, HSPC010, HIG1 domain family member 1A, mitochondrial, Hypoxia-inducible gene 1 protein
Host Species:	Rabbit
Clonality:	Polyclonal
Format:	IgG

Target Details

Gene Name:	HIGD1A
Reactivity:	Human
Immunogen Type:	Conjugated Peptide
Immunogen:	Anti-HIG1 antibody was prepared from whole rabbit serum produced by repeated immunizations with a 19 amino acid synthetic peptide near the N-terminus of human HIG1.

Purity/Specificity: Anti-HIG1 Antibody was affinity purified from monospecific antiserum by immunoaffinity chromatography. HIG1 antibody is predicted to not cross-react with HIG2

Relevant Links:

- [UniProtKB - Q9Y241](#)
- [GeneID - 25994](#)
- [NCBI - NP_001093138](#)

Application Details

Tested Applications: ELISA, IF, IHC, WB

Application Note: Anti-HIG1 Antibody has been tested for use in ELISA, Western Blotting, Immunocytochemistry and Immunofluorescence. Specific conditions for reactivity should be optimized by the end user. Expect a band at approximately 10 kDa in Western Blots of specific cell lysates and tissues.

Assay Dilutions: All assays should be optimized by the user. Recommended dilutions (if any) may be listed below.

ELISA: 1:5000 - 1:10000

IF: 10 µg/mL

WB: 0.5-1 µg/mL

Formulation

Physical State: Liquid (sterile filtered)

Concentration: 1 mg/mL by UV absorbance at 280 nm

Buffer: 0.01 M Sodium Phosphate, 0.25 M Sodium Chloride, pH 7.2

Preservative: 0.02% (w/v) Sodium Azide

Stabilizer: None

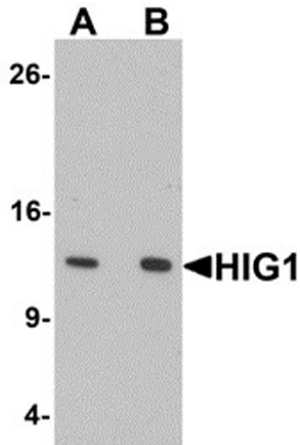
Shipping & Handling

Shipping Condition: Dry Ice

Storage Condition: Store vial at -20° C prior to opening. Aliquot contents and freeze at -20° C or below for extended storage. Avoid cycles of freezing and thawing. Centrifuge product if not completely clear after standing at room temperature. This product is stable for several weeks at 4° C as an undiluted liquid. Dilute only prior to immediate use.

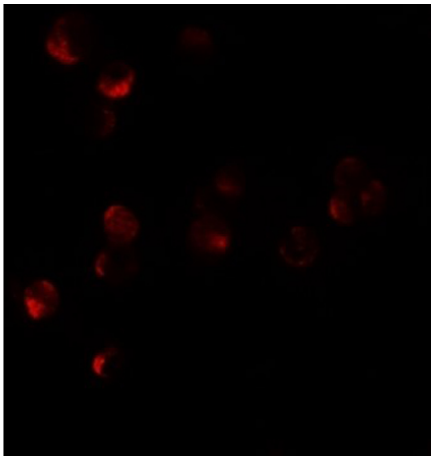
Expiration: Expiration date is one (1) year from date of receipt.

Images



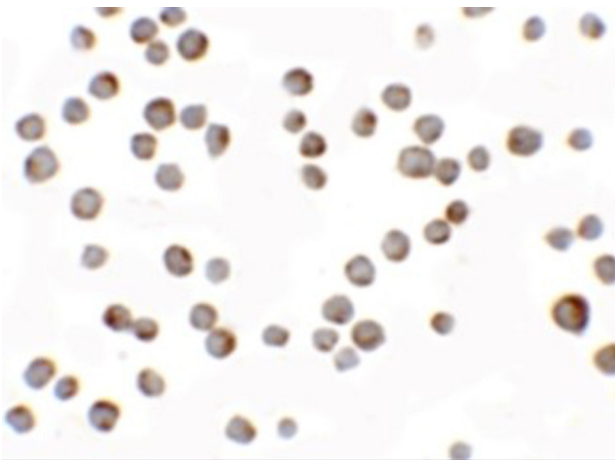
Western Blot

Western blot analysis of HIG1. Load: 293 cell lysate.
Primary Antibody: HIG1 antibody at at (A) 0.5 $\mu\text{g}/\text{mL}$ and (B) 1 $\mu\text{g}/\text{mL}$.



Immunofluorescence Microscopy

Immunofluorescence of HIG1.
Tissue: 293 cells tissue.
Primary Antibody: HIG1 antibody at 10 $\mu\text{g}/\text{mL}$.



Immunocytochemistry

Immunocytochemistry of HIG1.
Cell: 293 cells.
Primary Antibody: HIG1 antibody at 2.5 $\mu\text{g}/\text{mL}$.

Disclaimer

This product is for research use only and is not intended for therapeutic or diagnostic applications. Please contact a technical service representative for more information. All products of animal origin manufactured by Rockland Immunochemicals are derived from starting materials of North American origin. Collection was performed in United States Department of Agriculture (USDA) inspected facilities and all materials have been inspected and certified to be free of disease and suitable for exportation. All properties listed are typical characteristics and are not specifications. All suggestions and data are offered in good faith but without guarantee as conditions and methods of use of our products are beyond our control. All claims must be made within 30 days following the date of delivery. The prospective user must determine the suitability of our materials before adopting them on a commercial scale. Suggested uses of our products are not recommendations to use our products in violation of any patent or as a license under any patent of Rockland Immunochemicals, Inc. If you require a commercial license to use this material and do not have one, then return this material, unopened to: Rockland Inc., P.O. BOX 5199, Limerick, Pennsylvania, USA.