

Datasheet for 600-401-BQ6

HDGFRP2 Antibody

Overview

Description:	Anti-HDGFRP2 (RABBIT) Antibody - 600-401-BQ6
Item No.:	600-401-BQ6
Size:	100 µg
Applications:	ELISA, IF, IHC, WB
Reactivity:	Human, Mouse, Rat
Host Species:	Rabbit

Product Details

Background:	Hepatoma-derived growth factor-related protein 2 (HDGFRP2) is a widely expressed member of protein family that contains the HDGF related proteins 1-4 and lens epithelial derived growth factor (LEDGF). These family members show extensive homology at the amino terminus (termed the hath region). Little is known of the role of HDGFRP2, but like the related LEDGF, HDGFRP2 can bind HIV-1 integrase and stimulate HIV-1 integrase activity in vitro.
Synonyms:	HDGFRP2 Antibody, HDGF2, HDGF2, UNQ785/PRO1604, Hepatoma-derived growth factor-related protein 2, Hepatoma-derived growth factor 2, HRP-2
Host Species:	Rabbit
Clonality:	Polyclonal
Format:	IgG

Target Details

Gene Name:	HDGFRP2
Reactivity:	Human, Mouse, Rat
Immunogen Type:	Conjugated Peptide
Immunogen:	Anti-HDGFRP2 antibody was prepared from whole rabbit serum produced by repeated immunizations with an 18 amino acid synthetic peptide near the N-terminus of human HDGFRP2.

Purity/Specificity: Anti-HDGFRP2 Antibody was affinity purified from monospecific antiserum by immunoaffinity chromatography. At least two isoforms of HDGFRP2 are known to exist; this antibody will recognize both isoforms. This antibody is predicted to not cross-react with other HDGFRP family members

Relevant Links:

- [UniProtKB - Q7Z4V5](#)
- [GeneID - 84717](#)
- [NCBI - EAW69215](#)

Application Details

Tested Applications: ELISA, IF, IHC, WB

Application Note: Anti-HDGFRP2 Antibody has been tested for use in ELISA, Western Blotting, Immunohistochemistry and Immunofluorescence. Specific conditions for reactivity should be optimized by the end user. Expect a band at approximately 74 kDa in Western Blots of specific cell lysates and tissues.

Assay Dilutions: All assays should be optimized by the user. Recommended dilutions (if any) may be listed below.

ELISA: 1:5000 - 1:10000

IF: 20 µg/mL

IHC: 5 µg/mL

WB: 0.5-1 µg/mL

Formulation

Physical State: Liquid (sterile filtered)

Concentration: 1 mg/mL by UV absorbance at 280 nm

Buffer: 0.01 M Sodium Phosphate, 0.25 M Sodium Chloride, pH 7.2

Preservative: 0.02% (w/v) Sodium Azide

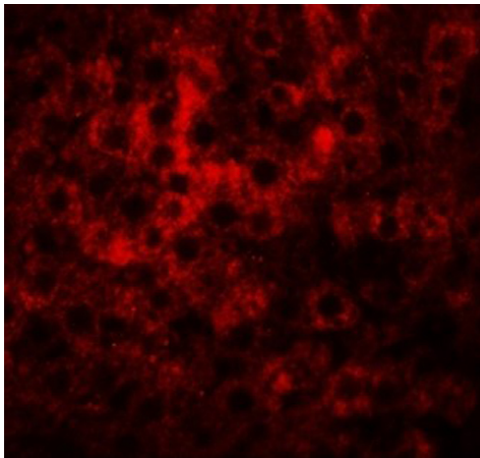
Stabilizer: None

Shipping & Handling

Shipping Condition: Dry Ice

Storage Condition:	Store vial at -20° C prior to opening. Aliquot contents and freeze at -20° C or below for extended storage. Avoid cycles of freezing and thawing. Centrifuge product if not completely clear after standing at room temperature. This product is stable for several weeks at 4° C as an undiluted liquid. Dilute only prior to immediate use.
Expiration:	Expiration date is one (1) year from date of receipt.

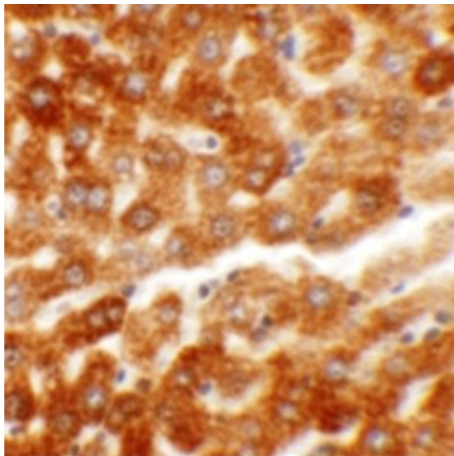
Images



Immunofluorescence Microscopy

Immunofluorescence of HDGFRP2.

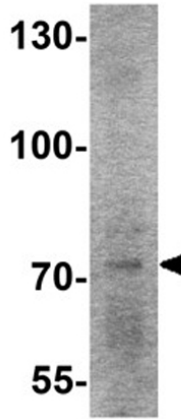
Tissue: rat liver tissue. Primary Antibody: HDGFRP2 antibody at 20 µg/mL.



Immunohistochemistry

Immunohistochemistry of HDGFRP2.

Tissue: rat liver tissue. Primary Antibody: HDGFRP2 antibody at 5 µg/mL.

**Western Blot**

Western blot analysis of HDGFRP2. Load: rat lung tissue lysate. Primary Antibody: HDGFRP2 antibody at 2 µg/mL.

Disclaimer

This product is for research use only and is not intended for therapeutic or diagnostic applications. Please contact a technical service representative for more information. All products of animal origin manufactured by Rockland Immunochemicals are derived from starting materials of North American origin. Collection was performed in United States Department of Agriculture (USDA) inspected facilities and all materials have been inspected and certified to be free of disease and suitable for exportation. All properties listed are typical characteristics and are not specifications. All suggestions and data are offered in good faith but without guarantee as conditions and methods of use of our products are beyond our control. All claims must be made within 30 days following the date of delivery. The prospective user must determine the suitability of our materials before adopting them on a commercial scale. Suggested uses of our products are not recommendations to use our products in violation of any patent or as a license under any patent of Rockland Immunochemicals, Inc. If you require a commercial license to use this material and do not have one, then return this material, unopened to: Rockland Inc., P.O. BOX 5199, Limerick, Pennsylvania, USA.