

Datasheet for 600-401-BQ5**Hax1b Antibody****Overview**

Description:	Anti-Hax1b (RABBIT) Antibody - 600-401-BQ5
Item No.:	600-401-BQ5
Size:	100 µg
Applications:	ELISA, WB
Reactivity:	Human, Mouse, Rat
Host Species:	Rabbit

Product Details

Background:	The HS-1 associated protein X-1 (Hax1) was initially identified in a yeast two-hybrid assay on the basis of its ability to bind to the hemapoietic cell-specific protein 1 (HS-1). Hax1 possesses anti-apoptotic activity and is structurally related to Bcl-2 family members, including the presence of BH1- and BH2-like domains. It has recently been shown to interact with HIV viral protein R (Vpr), a protein required for viral pathogenesis of HIV and linked to T-cell apoptosis through activation of caspases 3 and 9. Other studies indicate that Hax1-mediated processing of HtrA2 (also known as Omi) by the mitochondrial protease PARL allows survival of lymphocytes and neurons when cytokines are limiting.
Synonyms:	Hax1b Antibody, SCN3, HS1BP1, HCLSBP1, HCLS1-associated protein X-1, HS1-associating protein X-1, HAX-1
Host Species:	Rabbit
Clonality:	Polyclonal
Format:	IgG

Target Details

Gene Name:	HAX1
Reactivity:	Human, Mouse, Rat
Immunogen Type:	Conjugated Peptide
Immunogen:	Anti-Hax1b antibody was prepared from whole rabbit serum produced by repeated immunizations with a 10 amino acid synthetic peptide near the N-terminus of human Hax1b.

Purity/Specificity: Anti-Hax1b Antibody was affinity purified from monospecific antiserum by immunoaffinity chromatography. At least four isoforms of Hax1 are known to exist. This antibody is predicted to recognize Hax1b.

Relevant Links:

- [UniProtKB - O00165](#)
- [GeneID - 10456](#)
- [NCBI - NP_001018238](#)

Application Details

Tested Applications: ELISA, WB

Application Note: Anti-Hax1b Antibody has been tested for use in ELISA and Western Blotting. Specific conditions for reactivity should be optimized by the end user. Expect a band at approximately 32 kDa in Western Blots of specific cell lysates and tissues.

Assay Dilutions: All assays should be optimized by the user. Recommended dilutions (if any) may be listed below.

ELISA: 1:10,000 - 1:20,000

WB: 1-2 µg/mL

Formulation

Physical State: Liquid (sterile filtered)

Concentration: 1 mg/mL by UV absorbance at 280 nm

Buffer: 0.01 M Sodium Phosphate, 0.25 M Sodium Chloride, pH 7.2

Preservative: 0.02% (w/v) Sodium Azide

Stabilizer: None

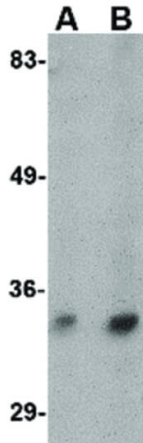
Shipping & Handling

Shipping Condition: Dry Ice

Storage Condition: Store vial at -20° C prior to opening. Aliquot contents and freeze at -20° C or below for extended storage. Avoid cycles of freezing and thawing. Centrifuge product if not completely clear after standing at room temperature. This product is stable for several weeks at 4° C as an undiluted liquid. Dilute only prior to immediate use.

Expiration: Expiration date is one (1) year from date of receipt.

Images



Western Blot

Western Blot of Hax1b antibody. Lane A: Mouse brain tissue lysate at 1 $\mu\text{g}/\text{mL}$. Lane B: Mouse brain tissue lysate at 2 $\mu\text{g}/\text{mL}$. Load: 35 μg per lane. Secondary antibody: Peroxidase rabbit secondary antibody at 1:10,000 for 45 min at RT. Block: 5% BLOTTO overnight at 4°C. Predicted/Observed size: 31.6 kDa, ~32 kDa for Hax1b.

Disclaimer

This product is for research use only and is not intended for therapeutic or diagnostic applications. Please contact a technical service representative for more information. All products of animal origin manufactured by Rockland Immunochemicals are derived from starting materials of North American origin. Collection was performed in United States Department of Agriculture (USDA) inspected facilities and all materials have been inspected and certified to be free of disease and suitable for exportation. All properties listed are typical characteristics and are not specifications. All suggestions and data are offered in good faith but without guarantee as conditions and methods of use of our products are beyond our control. All claims must be made within 30 days following the date of delivery. The prospective user must determine the suitability of our materials before adopting them on a commercial scale. Suggested uses of our products are not recommendations to use our products in violation of any patent or as a license under any patent of Rockland Immunochemicals, Inc. If you require a commercial license to use this material and do not have one, then return this material, unopened to: Rockland Inc., P.O. BOX 5199, Limerick, Pennsylvania, USA.