

**Datasheet for 600-401-BP6****GSTP1 Antibody****Overview**

<b>Description:</b>	Anti-GSTP1 (RABBIT) Antibody - 600-401-BP6
<b>Item No.:</b>	600-401-BP6
<b>Size:</b>	100 µg
<b>Applications:</b>	ELISA, IF, IHC, WB
<b>Reactivity:</b>	Human, Mouse, Rat
<b>Host Species:</b>	Rabbit

**Product Details**

**Background:** Glutathione S-transferases (GSTs) are a family of enzymes that play an important role in detoxification by catalyzing the conjugation of many hydrophobic and electrophilic compounds with reduced glutathione. Based on their biochemical, immunologic, and structural properties, the soluble GSTs are categorized into 4 main classes: alpha, mu, pi, and theta. The glutathione S-transferase pi gene (GSTP1) is a polymorphic gene encoding active, functionally different GSTP1 variant proteins that are thought to function in xenobiotic metabolism (i.e., the metabolism of environmental mutagens and carcinogens) and may play a role in susceptibility to cancer. More recent experiments have suggested that differential expression of GSTP1 also contributes to the sensitivity of xenobiotics in the substantia nigra and may influence the pathogenesis of reactive oxygen species-induced neurological disorders such as Parkinson's disease. CpG island hypermethylation of the GSTP1 promoter leading to the silencing of the GSTP1 gene has also been linked to cancer.

<b>Synonyms:</b>	GSTP1 Antibody, PI, DFN7, GST3, GSTP, FAEES3, HEL-S-22, Glutathione S-transferase P, GST class-pi
<b>Host Species:</b>	Rabbit
<b>Clonality:</b>	Polyclonal
<b>Format:</b>	IgG

**Target Details**

<b>Gene Name:</b>	GSTP1
<b>Reactivity:</b>	Human, Mouse, Rat

<b>Immunogen Type:</b>	Conjugated Peptide
<b>Immunogen:</b>	Anti-GSTP1 antibody was prepared from whole rabbit serum produced by repeated immunizations with a 14 amino acid synthetic peptide from near the internal region of human GSTP1.
<b>Purity/Specificity:</b>	Anti-GSTP1 Antibody was affinity purified from monospecific antiserum by immunoaffinity chromatography. Cross reactivity with GSTP1 from other sources has not been determined.
<b>Relevant Links:</b>	<ul style="list-style-type: none"><li>• <a href="#">UniProtKB - P09211</a></li><li>• <a href="#">GenelD - 2950</a></li><li>• <a href="#">NCBI - NP_000843</a></li></ul>

## Application Details

<b>Tested Applications:</b>	ELISA, IF, IHC, WB
<b>Application Note:</b>	Anti-GSTP1 Antibody has been tested for use in ELISA, Western Blotting, Immunohistochemistry and Immunofluorescence. Specific conditions for reactivity should be optimized by the end user. Expect a band at approximately 23 kDa in Western Blots of specific cell lysates and tissues.
<b>Assay Dilutions:</b>	All assays should be optimized by the user. Recommended dilutions (if any) may be listed below.
<b>ELISA:</b>	1:5000 - 1:10000
<b>IF:</b>	20 µg/mL
<b>IHC:</b>	2.5 µg/mL
<b>WB:</b>	0.5-1 µg/mL

## Formulation

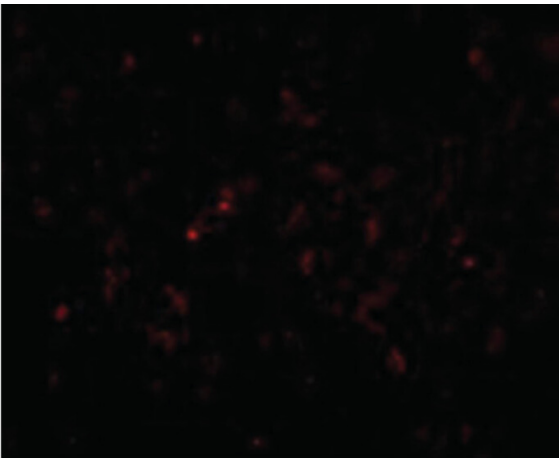
<b>Physical State:</b>	Liquid (sterile filtered)
<b>Concentration:</b>	1 mg/mL by UV absorbance at 280 nm
<b>Buffer:</b>	0.01 M Sodium Phosphate, 0.25 M Sodium Chloride, pH 7.2
<b>Preservative:</b>	0.02% (w/v) Sodium Azide
<b>Stabilizer:</b>	None

## Shipping & Handling

<b>Shipping Condition:</b>	Dry Ice
----------------------------	---------

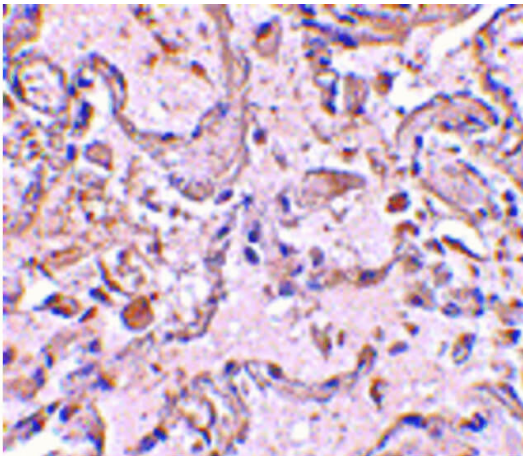
<b>Storage Condition:</b>	Store vial at -20° C prior to opening. Aliquot contents and freeze at -20° C or below for extended storage. Avoid cycles of freezing and thawing. Centrifuge product if not completely clear after standing at room temperature. This product is stable for several weeks at 4° C as an undiluted liquid. Dilute only prior to immediate use.
<b>Expiration:</b>	Expiration date is one (1) year from date of receipt.

## Images



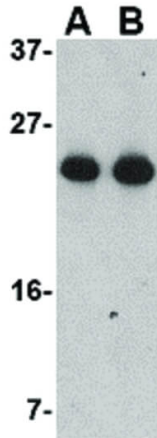
### Immunofluorescence Microscopy

Immunofluorescence Microscopy of GSTP1 antibody.  
Tissue: Human lung cells. Fixation: 0.5% PFA. Antigen retrieval: not required. Primary antibody: GSTP1 antibody at 20 µg/mL for 1 h at RT. Secondary antibody: Fluorescein rabbit secondary antibody at 1:10,000 for 45 min at RT. Staining: GSTP1 as a red fluorescent signal.



### Immunohistochemistry

Immunohistochemistry of GSTP1 antibody. Tissue: Human lung tissue. Fixation: formalin fixed paraffin embedded. Antigen retrieval: not required. Primary antibody: GSTP1 antibody at 2.5 µg/mL for 1 h at RT. Secondary antibody: Peroxidase rabbit secondary antibody at 1:10,000 for 45 min at RT. Localization: GSTP1 is nuclear and occasionally cytoplasmic. Staining: GSTP1 as precipitated red signal with hematoxylin purple nuclear counterstain.

**Western Blot**

Western Blot of GSTP1 antibody. Lane A: Jurkat cell lysate at 0.5 µg/mL. Lane B: Jurkat cell lysate at 1 µg/mL. Load: 35 µg per lane. Secondary antibody: Peroxidase rabbit secondary antibody at 1:10,000 for 45 min at RT. Block: 5% BLOTTO overnight at 4°C. Predicted/Observed size: 23.3 kDa, ~25 kDa for GSTP1.

**Disclaimer**

This product is for research use only and is not intended for therapeutic or diagnostic applications. Please contact a technical service representative for more information. All products of animal origin manufactured by Rockland Immunochemicals are derived from starting materials of North American origin. Collection was performed in United States Department of Agriculture (USDA) inspected facilities and all materials have been inspected and certified to be free of disease and suitable for exportation. All properties listed are typical characteristics and are not specifications. All suggestions and data are offered in good faith but without guarantee as conditions and methods of use of our products are beyond our control. All claims must be made within 30 days following the date of delivery. The prospective user must determine the suitability of our materials before adopting them on a commercial scale. Suggested uses of our products are not recommendations to use our products in violation of any patent or as a license under any patent of Rockland Immunochemicals, Inc. If you require a commercial license to use this material and do not have one, then return this material, unopened to: Rockland Inc., P.O. BOX 5199, Limerick, Pennsylvania, USA.