

Datasheet for 600-401-BP4**GRTP1 Antibody****Overview**

Description:	Anti-GRTP1 (RABBIT) Antibody - 600-401-BP4
Item No.:	600-401-BP4
Size:	100 µg
Applications:	ELISA, IF, IHC, WB
Reactivity:	Human, Mouse, Rat
Host Species:	Rabbit

Product Details

Background:	Growth hormone regulated TBC protein 1 (GRTP1) was identified through microarray analysis as a gene whose expression is regulated by growth hormone (GH). It contains the TBC signature motif of GTPase activator proteins of Rab-like small GTPases. GRTP1 mRNA is expressed at highest levels in testes, and is also present in kidney, lung, liver, and intestine. Administration of GH to mice resulted in an increase in GRTP1 mRNA in testes, but a decrease of GRTP1 mRNA in kidney and liver. GRTP1 was identified as an HIV dependency factor (HDF), suggesting that GRTP1 may be an important drug target in HIV treatment. At least three isoforms of GRTP1 are known to exist; this antibody should recognize all isoforms.
Synonyms:	GRTP1 Antibody, TBC1D6, TBC1D6, Growth hormone-regulated TBC protein 1, TBC1 domain family member 6
Host Species:	Rabbit
Clonality:	Polyclonal
Format:	IgG

Target Details

Gene Name:	GRTP1
Reactivity:	Human, Mouse, Rat
Immunogen Type:	Conjugated Peptide

Immunogen:	Anti-GRTP1 antibody was prepared from whole rabbit serum produced by repeated immunizations with a 18 amino acid synthetic peptide from near the N-terminus of human GRTP1.
Purity/Specificity:	Anti-GRTP1 Antibody was affinity purified from monospecific antiserum by immunoaffinity chromatography. Cross reactivity with GRTP1 from other sources has not been determined.
Relevant Links:	<ul style="list-style-type: none">• UniProtKB - Q5TC63• GeneID - 79774• NCBI - EAX09206

Application Details

Tested Applications:	ELISA, IF, IHC, WB
Application Note:	Anti-GRTP1 Antibody has been tested for use in ELISA, Western Blotting, Immunocytochemistry and Immunofluorescence. Specific conditions for reactivity should be optimized by the end user. Expect a band at approximately 39 kDa in Western Blots of specific cell lysates and tissues.
Assay Dilutions:	All assays should be optimized by the user. Recommended dilutions (if any) may be listed below.
ELISA:	1:10,000 - 1:20,000
IF:	20 µg/mL
WB:	1-2 µg/mL

Formulation

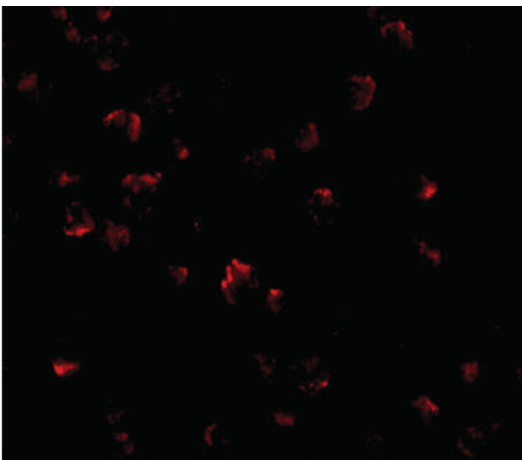
Physical State:	Liquid (sterile filtered)
Concentration:	1 mg/mL by UV absorbance at 280 nm
Buffer:	0.01 M Sodium Phosphate, 0.25 M Sodium Chloride, pH 7.2
Preservative:	0.02% (w/v) Sodium Azide
Stabilizer:	None

Shipping & Handling

Shipping Condition:	Dry Ice
----------------------------	---------

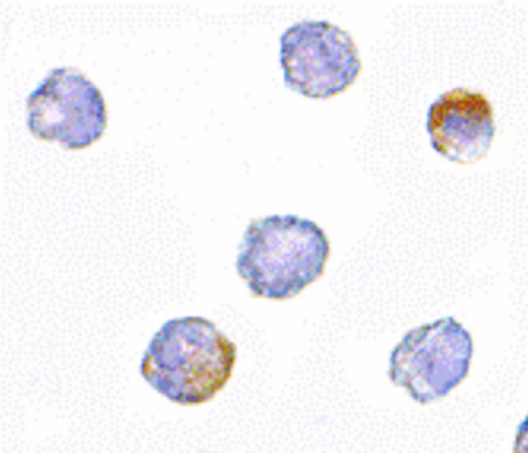
Storage Condition:	Store vial at -20° C prior to opening. Aliquot contents and freeze at -20° C or below for extended storage. Avoid cycles of freezing and thawing. Centrifuge product if not completely clear after standing at room temperature. This product is stable for several weeks at 4° C as an undiluted liquid. Dilute only prior to immediate use.
Expiration:	Expiration date is one (1) year from date of receipt.

Images



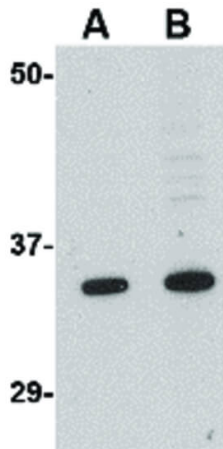
Immunofluorescence Microscopy

Immunofluorescence Microscopy of GRTP1 antibody.
Tissue: K562 cells. Fixation: 0.5% PFA. Antigen retrieval: not required. Primary antibody: GRTP1 antibody at 20 µg/mL for 1 h at RT. Secondary antibody: Fluorescein rabbit secondary antibody at 1:10,000 for 45 min at RT. Staining: GRTP1 as a red fluorescent signal.



Immunohistochemistry

Immunocytochemistry of GRTP1 antibody. Tissue: K562 cells. Fixation: formalin fixed paraffin embedded. Antigen retrieval: not required. Primary antibody: GRTP1 antibody at 2.5 µg/mL for 1 h at RT. Secondary antibody: Peroxidase rabbit secondary antibody at 1:10,000 for 45 min at RT. Localization: GRTP1 is nuclear and occasionally cytoplasmic. Staining: GRTP1 as precipitated brown signal with hematoxylin purple counterstain.

**Western Blot**

Western Blot of GRTP1 antibody. Lane A: K562 cell lysate at 1 µg/mL. Lane B: K562 cell lysate at 2 µg/mL. Load: 35 µg per lane. Secondary antibody: Peroxidase rabbit secondary antibody at 1:10,000 for 45 min at RT. Block: 5% BLOTTO overnight at 4°C. Predicted/Observed size: 38.55 kDa, ~35 kDa for GTRP1.

Disclaimer

This product is for research use only and is not intended for therapeutic or diagnostic applications. Please contact a technical service representative for more information. All products of animal origin manufactured by Rockland Immunochemicals are derived from starting materials of North American origin. Collection was performed in United States Department of Agriculture (USDA) inspected facilities and all materials have been inspected and certified to be free of disease and suitable for exportation. All properties listed are typical characteristics and are not specifications. All suggestions and data are offered in good faith but without guarantee as conditions and methods of use of our products are beyond our control. All claims must be made within 30 days following the date of delivery. The prospective user must determine the suitability of our materials before adopting them on a commercial scale. Suggested uses of our products are not recommendations to use our products in violation of any patent or as a license under any patent of Rockland Immunochemicals, Inc. If you require a commercial license to use this material and do not have one, then return this material, unopened to: Rockland Inc., P.O. BOX 5199, Limerick, Pennsylvania, USA.