

**Datasheet for 600-401-BP3****GRK6 Antibody****Overview**

<b>Description:</b>	Anti-GRK6 (RABBIT) Antibody - 600-401-BP3
<b>Item No.:</b>	600-401-BP3
<b>Size:</b>	100 µg
<b>Applications:</b>	ELISA, IF, IHC, WB
<b>Reactivity:</b>	Human, Mouse, Rat
<b>Host Species:</b>	Rabbit

**Product Details**

<b>Background:</b>	The G protein–coupled receptor kinases (GRKs) are a versatile family of kinases that play a critical role in cancer metastasis through their regulation of G-protein coupled receptors (GPCRs) involved in growth factor mediated cell migration (1,2). Phosphorylation of receptors by GRKs appears to be strictly dependent on the receptor being in its agonist-activated state (1). GRK6 is one of 7 members of the GRK serine/threonine kinase subfamily, which has been shown to modulate the Wnt signaling pathway via phosphorylation of LRP6 (3,4), and the insulin-like growth factor signaling pathway (4). GRK6 may also play a role in immune system function (5).
<b>Synonyms:</b>	GRK6 Antibody, GPRK6, GPRK6, G protein-coupled receptor kinase 6, G protein-coupled receptor kinase GRK6
<b>Host Species:</b>	Rabbit
<b>Clonality:</b>	Polyclonal
<b>Format:</b>	IgG

**Target Details**

<b>Gene Name:</b>	GRK6
<b>Reactivity:</b>	Human, Mouse, Rat
<b>Immunogen Type:</b>	Conjugated Peptide
<b>Immunogen:</b>	Anti-GRK6 antibody was prepared from whole rabbit serum produced by repeated immunizations with a 19 amino acid peptide near the C-terminus of human GRK6.

**Purity/Specificity:** Anti-GRK6 antibody was affinity purified from monospecific antiserum by immunoaffinity chromatography. GRK6 antibody is human, mouse and rat reactive. Multiple isoforms of GRK6 are known to exist. This antibody is predicted to not cross-react with other members of the GRK protein family.

**Relevant Links:**

- [UniProtKB - P43250](#)
- [GeneID - 2870](#)
- [NCBI - NP\\_001004106](#)

## Application Details

**Tested Applications:** ELISA, IF, IHC, WB

**Application Note:** Anti-GRK6 Antibody has been tested for use in ELISA, Western Blotting, Immunohistochemistry and Immunofluorescence. Specific conditions for reactivity should be optimized by the end user. Expect a band at approximately 66 kDa in Western Blots of specific cell lysates and tissues.

**Assay Dilutions:** All assays should be optimized by the user. Recommended dilutions (if any) may be listed below.

**ELISA:** 1:10,000 - 1:20,000

**IF:** 20 µg/mL

**IHC:** 5 µg/mL

**WB:** 1-2 µg/mL

## Formulation

**Physical State:** Liquid (sterile filtered)

**Concentration:** 1 mg/mL by UV absorbance at 280 nm

**Buffer:** 0.01 M Sodium Phosphate, 0.25 M Sodium Chloride, pH 7.2

**Preservative:** 0.02% (w/v) Sodium Azide

**Stabilizer:** None

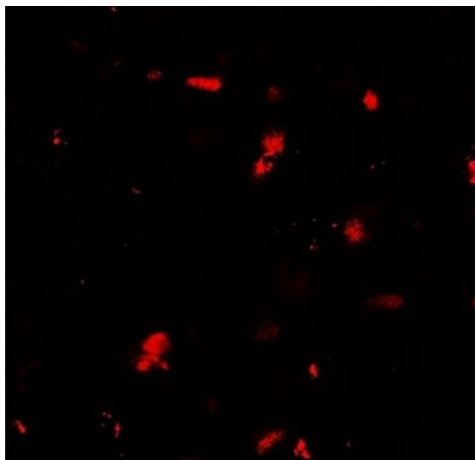
## Shipping & Handling

**Shipping Condition:** Dry Ice

**Storage Condition:** Store vial at -20° C prior to opening. Aliquot contents and freeze at -20° C or below for extended storage. Avoid cycles of freezing and thawing. Centrifuge product if not completely clear after standing at room temperature. This product is stable for several weeks at 4° C as an undiluted liquid. Dilute only prior to immediate use.

**Expiration:** Expiration date is one (1) year from date of receipt.

## Images

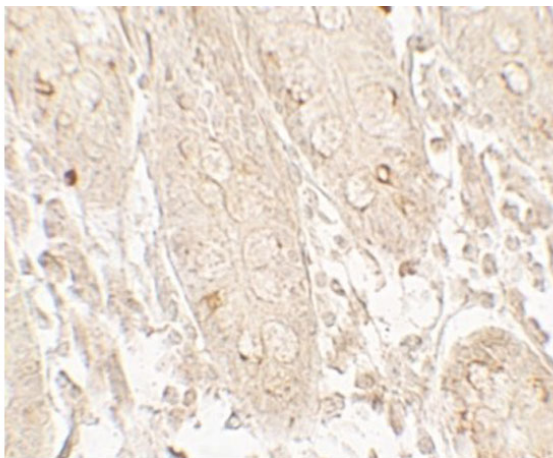


### Immunofluorescence Microscopy

Immunofluorescence of GRK6.

Tissue: human small intestine tissue.

Primary Antibody: GRK6 antibody at 20 µg/mL.

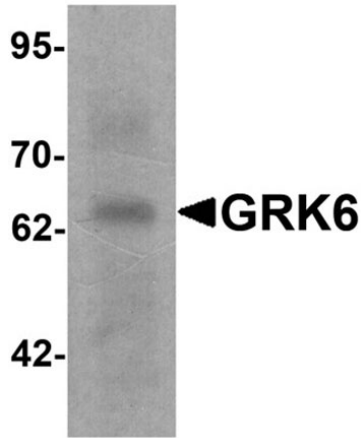


### Immunohistochemistry

Immunohistochemistry of GRK6.

Tissue: human small intestine tissue.

Primary Antibody: GRK6 antibody at 5 µg/mL.

**Western Blot**

Western blot of GRK6.

Load: rat small intestine tissue lysate.

Primary Antibody: GRK6 antibody at 1 µg/ml.

**Disclaimer**

This product is for research use only and is not intended for therapeutic or diagnostic applications. Please contact a technical service representative for more information. All products of animal origin manufactured by Rockland Immunochemicals are derived from starting materials of North American origin. Collection was performed in United States Department of Agriculture (USDA) inspected facilities and all materials have been inspected and certified to be free of disease and suitable for exportation. All properties listed are typical characteristics and are not specifications. All suggestions and data are offered in good faith but without guarantee as conditions and methods of use of our products are beyond our control. All claims must be made within 30 days following the date of delivery. The prospective user must determine the suitability of our materials before adopting them on a commercial scale. Suggested uses of our products are not recommendations to use our products in violation of any patent or as a license under any patent of Rockland Immunochemicals, Inc. If you require a commercial license to use this material and do not have one, then return this material, unopened to: Rockland Inc., P.O. BOX 5199, Limerick, Pennsylvania, USA.