

**Datasheet for 600-401-BP1****GRINA Antibody****Overview**

<b>Description:</b>	Anti-GRINA (RABBIT) Antibody - 600-401-BP1
<b>Item No.:</b>	600-401-BP1
<b>Size:</b>	100 µg
<b>Applications:</b>	ELISA, WB
<b>Reactivity:</b>	Human
<b>Host Species:</b>	Rabbit

**Product Details**

<b>Background:</b>	The transmembrane BAX inhibitor motif (TMBIM) family of proteins includes the founder member TMBIM6/BI-1, TMBIM1/RECS1 (responsive to centrifugal force and shear stress gene 1 protein), TMBIM2/LFG (life guard), TMBIM3/GRINA (glutamate receptor ionotropic NMDA protein 1), TMBIM4/GAAP (Golgi anti-apoptotic-associated protein), and TMBIM5/GHTIM (growth hormone-inducible transmembrane protein). They are highly conserved in mammals and zebrafish and contain a conserved BAX inhibitor-1 motif. GRINA is expressed in the brain and is a potential apoptotic regulator.
<b>Synonyms:</b>	GRINA Antibody, LFG1, HNRGW, TMBIM3, NMDARA1, LFG1, Protein lifeguard 1, NMDA receptor glutamate-binding subunit
<b>Host Species:</b>	Rabbit
<b>Clonality:</b>	Polyclonal
<b>Format:</b>	IgG

**Target Details**

<b>Gene Name:</b>	GRINA
<b>Reactivity:</b>	Human
<b>Immunogen Type:</b>	Conjugated Peptide
<b>Immunogen:</b>	Anti- GRINA antibody was prepared from whole rabbit serum produced by repeated immunizations with an 18 amino acid peptide near the internal region of human GRINA.

**Purity/Specificity:** Anti-GRINA Antibody was affinity purified from monospecific antiserum by immunoaffinity chromatography. GRINA antibody is predicted to not cross-react with other members of the TMBIM family.

**Relevant Links:**

- [UniProtKB - Q7Z429](#)
- [GeneID - 2907](#)
- [NCBI - NP\\_001009184](#)

## Application Details

**Tested Applications:** ELISA, WB

**Application Note:** Anti-GRINA Antibody has been tested for use in ELISA and Western Blotting. Specific conditions for reactivity should be optimized by the end user. Expect a band at approximately 41 kDa in Western Blots of specific cell lysates and tissues.

**Assay Dilutions:** All assays should be optimized by the user. Recommended dilutions (if any) may be listed below.

**ELISA:** 1:10,000 - 1:20,000

**WB:** 1-2 µg/mL

## Formulation

**Physical State:** Liquid (sterile filtered)

**Concentration:** 1 mg/mL by UV absorbance at 280 nm

**Buffer:** 0.01 M Sodium Phosphate, 0.25 M Sodium Chloride, pH 7.2

**Preservative:** 0.02% (w/v) Sodium Azide

**Stabilizer:** None

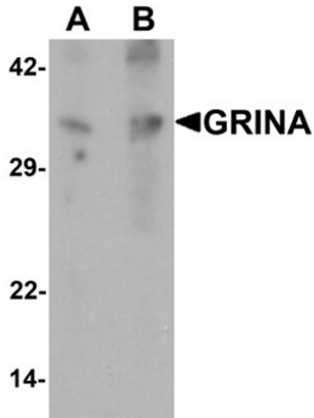
## Shipping & Handling

**Shipping Condition:** Dry Ice

**Storage Condition:** Store vial at -20° C prior to opening. Aliquot contents and freeze at -20° C or below for extended storage. Avoid cycles of freezing and thawing. Centrifuge product if not completely clear after standing at room temperature. This product is stable for several weeks at 4° C as an undiluted liquid. Dilute only prior to immediate use.

**Expiration:** Expiration date is one (1) year from date of receipt.

## Images



### Western Blot

Western blot analysis of GRINA.

Load: human testis tissue lysate.

Primary Antibody: GRINA antibody at (A) 1 and (B) 2 µg/mL.

## Disclaimer

This product is for research use only and is not intended for therapeutic or diagnostic applications. Please contact a technical service representative for more information. All products of animal origin manufactured by Rockland Immunochemicals are derived from starting materials of North American origin. Collection was performed in United States Department of Agriculture (USDA) inspected facilities and all materials have been inspected and certified to be free of disease and suitable for exportation. All properties listed are typical characteristics and are not specifications. All suggestions and data are offered in good faith but without guarantee as conditions and methods of use of our products are beyond our control. All claims must be made within 30 days following the date of delivery. The prospective user must determine the suitability of our materials before adopting them on a commercial scale. Suggested uses of our products are not recommendations to use our products in violation of any patent or as a license under any patent of Rockland Immunochemicals, Inc. If you require a commercial license to use this material and do not have one, then return this material, unopened to: Rockland Inc., P.O. BOX 5199, Limerick, Pennsylvania, USA.