

Datasheet for 600-401-BN3**GRB10 Antibody****Overview**

Description:	Anti-GRB10 (RABBIT) Antibody - 600-401-BN3
Item No.:	600-401-BN3
Size:	100 µg
Applications:	ELISA, IF, WB
Reactivity:	Human, Mouse, Rat
Host Species:	Rabbit

Product Details

Background:	GRB10 belongs to a small family of adapter proteins that are known to interact with a number of receptor tyrosine kinases and signaling molecules and function in diverse cellular processes. GRB10 is a growth factor receptor-binding protein that interacts with insulin receptors and insulin-like growth-factor receptors. Overexpression of some isoforms of GRB10 inhibits tyrosine kinase activity and results in growth suppression. GRB10 can also interact with the L isoform of the proapoptotic protein Bim. This gene is imprinted in a highly isoform- and tissue-specific manner, with expression observed from the paternal allele in the brain, and from the maternal allele in the placental trophoblasts.
Synonyms:	GRB10 Antibody, RSS, IRBP, MEG1, GRB-IR, Grb-10, GRBIR, KIAA0207, Growth factor receptor-bound protein 10, GRB10 adapter protein
Host Species:	Rabbit
Clonality:	Polyclonal
Format:	IgG

Target Details

Gene Name:	GRB10
Reactivity:	Human, Mouse, Rat
Immunogen Type:	Conjugated Peptide
Immunogen:	Anti-GRB10 antibody was prepared from whole rabbit serum produced by repeated immunizations with a 17 amino acid synthetic peptide near the C-terminus of human GRB10.

Purity/Specificity: Anti-GRB10 Antibody was affinity purified from monospecific antiserum by immunoaffinity chromatography. At least three isoforms of GRB10 are known to exist; this antibody will detect all three isoforms.

Relevant Links:

- [UniProtKB - Q13322](#)
- [GeneID - 2887](#)
- [NCBI - NP_005302](#)

Application Details

Tested Applications: ELISA, IF, WB

Application Note: Anti-GRB10 Antibody has been tested for use in ELISA, Western Blotting and Immunofluorescence. Specific conditions for reactivity should be optimized by the end user. Expect a band at approximately 67 kDa in Western Blots of specific cell lysates and tissues.

Assay Dilutions: All assays should be optimized by the user. Recommended dilutions (if any) may be listed below.

ELISA: 1:10,000 - 1:20,000

IF: 20 µg/mL

WB: 1-2 µg/mL

Formulation

Physical State: Liquid (sterile filtered)

Concentration: 1 mg/mL by UV absorbance at 280 nm

Buffer: 0.01 M Sodium Phosphate, 0.25 M Sodium Chloride, pH 7.2

Preservative: 0.02% (w/v) Sodium Azide

Stabilizer: None

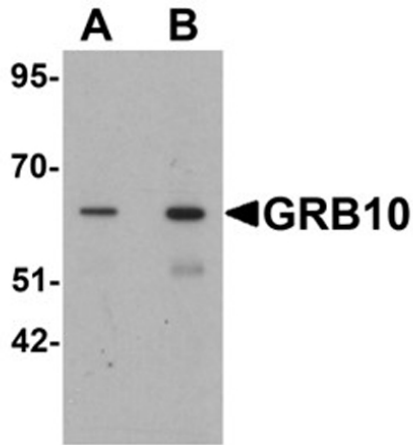
Shipping & Handling

Shipping Condition: Dry Ice

Storage Condition: Store vial at -20° C prior to opening. Aliquot contents and freeze at -20° C or below for extended storage. Avoid cycles of freezing and thawing. Centrifuge product if not completely clear after standing at room temperature. This product is stable for several weeks at 4° C as an undiluted liquid. Dilute only prior to immediate use.

Expiration: Expiration date is one (1) year from date of receipt.

Images

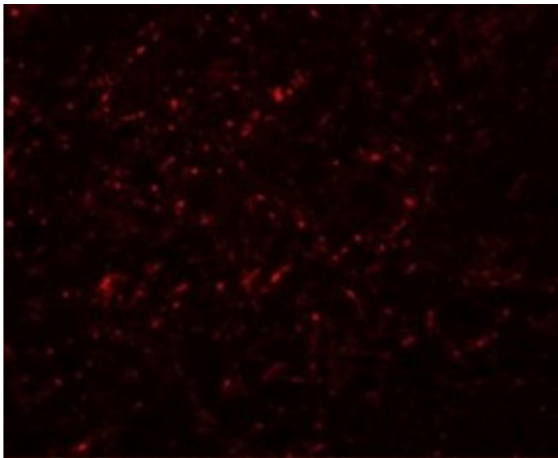


Western Blot

Western blot analysis of GRB10.

Load: SK-N-SH cell lysate.

Primary Antibody: GRB10 antibody at (A) 1 and (B) 2 µg/mL.



Immunofluorescence Microscopy

Immunofluorescence of GRB10.

Cell: rat brain cells.

Primary Antibody: GRB10 antibody at 20 µg/mL.

Disclaimer

This product is for research use only and is not intended for therapeutic or diagnostic applications. Please contact a technical service representative for more information. All products of animal origin manufactured by Rockland Immunochemicals are derived from starting materials of North American origin. Collection was performed in United States Department of Agriculture (USDA) inspected facilities and all materials have been inspected and certified to be free of disease and suitable for exportation. All properties listed are typical characteristics and are not specifications. All suggestions and data are offered in good faith but without guarantee as conditions and methods of use of our products are beyond our control. All claims must be made within 30 days following the date of delivery. The prospective user must determine the suitability of our materials before adopting them on a commercial scale. Suggested uses of our products are not recommendations to use our products in violation of any patent or as a license under any patent of Rockland Immunochemicals, Inc. If you require a commercial license to use this material and do not have one, then return this material, unopened to: Rockland Inc., P.O. BOX 5199, Limerick, Pennsylvania, USA.