

Datasheet for 600-401-BM8**GPR15 Antibody****Overview**

Description:	Anti-GPR15 (RABBIT) Antibody - 600-401-BM8
Item No.:	600-401-BM8
Size:	100 µg
Applications:	ELISA, IHC, WB
Reactivity:	Human, Mouse, Rat
Host Species:	Rabbit

Product Details

Background:	Human immunodeficiency virus (HIV) and related viruses require coreceptors to infect target cells. Some G protein-coupled receptors including CCR5, CXCR4, CCR3, CCR2b and CCR8 in the chemokine receptor family, and four new human molecules GPR15, STRL33, GPR1 and V28 were recently identified as HIV coreceptors. The genes encoding human and monkey GPR15/BOB (for G protein-coupled receptor 15 and brother of Bonzo, respectively,) were recently cloned. This novel G protein-coupled receptor serves as coreceptor for simian immunodeficiency virus (SIV), and for strains of HIV-2 and M-tropic HIV-1. The ligand for GPR15 has not been identified yet.
Synonyms:	GPR15 Antibody, BoB, Brother of Bonzo, G-protein coupled receptor 15
Host Species:	Rabbit
Clonality:	Polyclonal
Format:	IgG

Target Details

Gene Name:	GPR15
Reactivity:	Human, Mouse, Rat
Immunogen Type:	Conjugated Peptide

Immunogen:	Anti-GPR15 antibody was prepared from whole rabbit serum produced by repeated immunizations with a peptide corresponding to amino acids near the N-terminus of human GPR15. The sequence differs from those of African green monkey and pig-tailed macaque BOB by one amino acid (2).
Purity/Specificity:	Anti-GPR15 Antibody was affinity purified from monospecific antiserum by immunoaffinity chromatography. Cross reactivity with GPR15 from other sources has not been determined.
Relevant Links:	<ul style="list-style-type: none">• UniProtKB - P49685• GeneID - 2838• NCBI - U34806

Application Details

Tested Applications:	ELISA, IHC, WB
Application Note:	Anti-GPR15 Antibody has been tested for use in ELISA, immunocytochemistry, and Western Blotting. Specific conditions for reactivity should be optimized by the end user. Expect a band at approximately 41 kDa in Western Blots of specific cell lysates and tissues.
Assay Dilutions:	All assays should be optimized by the user. Recommended dilutions (if any) may be listed below.
ELISA:	1:5000 - 1:10000
WB:	0.5-1 µg/mL

Formulation

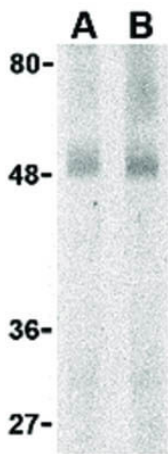
Physical State:	Liquid (sterile filtered)
Concentration:	1 mg/mL by UV absorbance at 280 nm
Buffer:	0.01 M Sodium Phosphate, 0.25 M Sodium Chloride, pH 7.2
Preservative:	0.02% (w/v) Sodium Azide
Stabilizer:	None

Shipping & Handling

Shipping Condition:	Dry Ice
----------------------------	---------

Storage Condition:	Store vial at -20° C prior to opening. Aliquot contents and freeze at -20° C or below for extended storage. Avoid cycles of freezing and thawing. Centrifuge product if not completely clear after standing at room temperature. This product is stable for several weeks at 4° C as an undiluted liquid. Dilute only prior to immediate use.
Expiration:	Expiration date is one (1) year from date of receipt.

Images



Western Blot

Western Blot of GPR15 antibody. Lane 1: Human spleen lysate with GPR15 at 0.5 µg/mL. Lane 2: Human spleen lysate with GPR15 at 1 µg/mL. Load: 35 µg per lane.

Secondary antibody: Peroxidase rabbit secondary antibody at 1:10,000 for 45 min at RT. Block: 5% BLOTTO overnight at 4°C. Predicted/Observed size: 40.8 kDa, 50 kDa for GPR15.

Other band(s): GPR15 splice variants and isoforms.

Disclaimer

This product is for research use only and is not intended for therapeutic or diagnostic applications. Please contact a technical service representative for more information. All products of animal origin manufactured by Rockland Immunochemicals are derived from starting materials of North American origin. Collection was performed in United States Department of Agriculture (USDA) inspected facilities and all materials have been inspected and certified to be free of disease and suitable for exportation. All properties listed are typical characteristics and are not specifications. All suggestions and data are offered in good faith but without guarantee as conditions and methods of use of our products are beyond our control. All claims must be made within 30 days following the date of delivery. The prospective user must determine the suitability of our materials before adopting them on a commercial scale. Suggested uses of our products are not recommendations to use our products in violation of any patent or as a license under any patent of Rockland Immunochemicals, Inc. If you require a commercial license to use this material and do not have one, then return this material, unopened to: Rockland Inc., P.O. BOX 5199, Limerick, Pennsylvania, USA.