

Datasheet for 600-401-BM1

GOLGA5 Antibody

Overview

Description:	Anti-GOLGA5 (RABBIT) Antibody - 600-401-BM1
Item No.:	600-401-BM1
Size:	100 µg
Applications:	ELISA, IF, IHC, WB
Reactivity:	Human, Mouse, Rat
Host Species:	Rabbit

Product Details

Background:	GOLGA5 (Golgi autoantigen, subfamily A, member 5), also known as GOLGA84, RFG5 (RET-fused gene 5 protein) or GOLIM5, is a ubiquitously expressed single-pass type II coiled-coil membrane protein that is involved in maintaining Golgi structure (1). It is localized to the Golgi apparatus and predominantly found on membranes at the cis side of the Golgi stack (1,2). As a mitotic phosphoprotein, GOLGA5 binds to active Rab 1 and associates with CASP (an isoform of CDP) in a golgin-tethering complex that is believed to play a role in intra-Golgi retrograde transport (3,4). Defects in GOLGA5 are a cause of thyroid papillary carcinoma (TPC) (5).
Synonyms:	GOLGA5 Antibody, RFG5, GOLIM5, ret-II, RETII, RFG5, PIG31, Golgin subfamily A member 5, Cell proliferation-inducing gene 31 protein
Host Species:	Rabbit
Clonality:	Polyclonal
Format:	IgG

Target Details

Gene Name:	GOLGA5
Reactivity:	Human, Mouse, Rat
Immunogen Type:	Conjugated Peptide
Immunogen:	Anti-GOLGA5 antibody was prepared from whole rabbit serum produced by repeated immunizations with an 18 amino acid peptide near the C-terminus of human GOLGA5.

Purity/Specificity: Anti-GOLGA5 Antibody was affinity purified from monospecific antiserum by immunoaffinity chromatography. GOLGA5 antibody is human, mouse and rat reactive. Two isoforms of GOLGA5 exist due to alternative splicing events.

Relevant Links:

- [UniProtKB - Q8TBA6](#)
- [GeneID - 9950](#)
- [NCBI - NP_005104](#)

Application Details

Tested Applications: ELISA, IF, IHC, WB

Application Note: Anti-GOLGA5 Antibody has been tested for use in ELISA, Western Blotting, Immunohistochemistry and Immunofluorescence. Specific conditions for reactivity should be optimized by the end user. Expect a band at approximately 83 kDa in Western Blots of specific cell lysates and tissues.

Assay Dilutions: All assays should be optimized by the user. Recommended dilutions (if any) may be listed below.

ELISA: 1:10,000 - 1:20,000

IF: 20 µg/mL

IHC: 5 µg/mL

WB: 1-2 µg/mL

Formulation

Physical State: Liquid (sterile filtered)

Concentration: 1 mg/mL by UV absorbance at 280 nm

Buffer: 0.01 M Sodium Phosphate, 0.25 M Sodium Chloride, pH 7.2

Preservative: 0.02% (w/v) Sodium Azide

Stabilizer: None

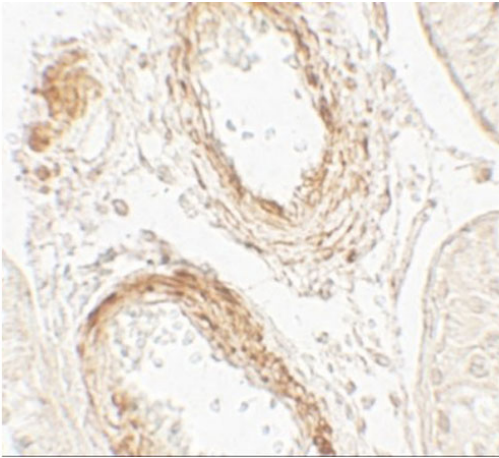
Shipping & Handling

Shipping Condition: Wet Ice

Storage Condition: Antibody can be stored at 4°C up to one year. Antibodies should not be exposed to prolonged high temperatures.

Expiration: Expiration date is one (1) year from date of receipt.

Images

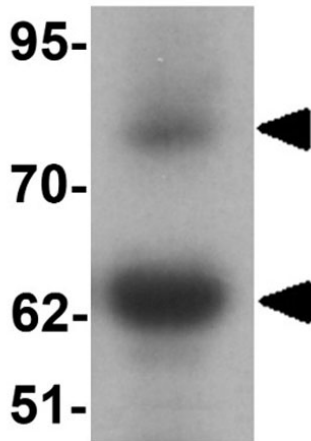


Immunohistochemistry

Immunohistochemistry of GOLGA5.

Tissue: human testis tissue.

Primary Antibody: GOLGA5 antibody at 5 µg/mL.

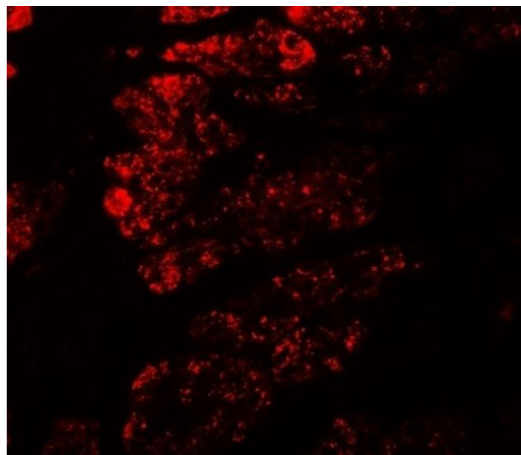


Western Blot

Western blot of GOLGA5.

Load: human testis tissue lysate.

Primary Antibody: GOLGA5 antibody at 1 µg/mL.

**Immunofluorescence Microscopy**

Immunofluorescence of GOLGA5.

Tissue: human testis tissue.

Primary Antibody: GOLGA5 antibody at 20 µg/mL.

Disclaimer

This product is for research use only and is not intended for therapeutic or diagnostic applications. Please contact a technical service representative for more information. All products of animal origin manufactured by Rockland Immunochemicals are derived from starting materials of North American origin. Collection was performed in United States Department of Agriculture (USDA) inspected facilities and all materials have been inspected and certified to be free of disease and suitable for exportation. All properties listed are typical characteristics and are not specifications. All suggestions and data are offered in good faith but without guarantee as conditions and methods of use of our products are beyond our control. All claims must be made within 30 days following the date of delivery. The prospective user must determine the suitability of our materials before adopting them on a commercial scale. Suggested uses of our products are not recommendations to use our products in violation of any patent or as a license under any patent of Rockland Immunochemicals, Inc. If you require a commercial license to use this material and do not have one, then return this material, unopened to: Rockland Inc., P.O. BOX 5199, Limerick, Pennsylvania, USA.