

Datasheet for 600-401-BL5

GLIPR1L1 Antibody**Overview**

Description:	Anti-GLIPR1L1 (RABBIT) Antibody - 600-401-BL5
Item No.:	600-401-BL5
Size:	100 µg
Applications:	ELISA, IF, IHC, WB
Reactivity:	Human
Host Species:	Rabbit

Product Details

Background:	The GLIPR1-like 1 protein (GLIPR1L1) gene is part of a p53 target gene cluster that includes the related proteins GLIPR1 and GLIPR1L2 (1). GLIPR1L1 is similar to both the pathogenesis-related protein (PR) superfamily and the cysteine-rich secretory protein (CRISP) family (2). GLIPR1 is a tumor suppressor whose expression is regulated by p53 (3). Unlike GLIPR1, GLIPR1L1 is expressed primarily in the testis and is thought to be involved in the binding of sperm to the oocyte complex (4).
Synonyms:	GLIPR1L1 Antibody, PRO7434, ALKN2972, GLIPR1-like protein 1
Host Species:	Rabbit
Clonality:	Polyclonal
Format:	IgG

Target Details

Gene Name:	GLIPR1L1
Reactivity:	Human
Immunogen Type:	Conjugated Peptide
Immunogen:	Anti-GLIPR1L1 antibody was prepared from whole rabbit serum produced by repeated immunizations with an 18 amino acid peptide near the N-terminus of human GLIPR1L1.

Purity/Specificity: Anti-GLIPR1L1 antibody was affinity purified from monospecific antiserum by immunoaffinity chromatography. GLIPR1L1 antibody is human specific. At least two isoforms of GLIPR1L1 are known to exist; this antibody will detect both isoforms. This antibody is predicted to not cross-react with other GLIPR or GLIPR-like proteins.

Relevant Links:

- [UniProtKB - Q6UWM5](#)
- [GeneID - 256710](#)
- [NCBI - NP_689992](#)

Application Details

Tested Applications: ELISA, IF, IHC, WB

Application Note: Anti-GLIPR1L1 Antibody has been tested for use in ELISA, Western Blotting, Immunohistochemistry and Immunofluorescence. Specific conditions for reactivity should be optimized by the end user. Expect a band at approximately 27 kDa in Western Blots of specific cell lysates and tissues.

Assay Dilutions: All assays should be optimized by the user. Recommended dilutions (if any) may be listed below.

ELISA: 1:10,000 - 1:20,000

IF: 20 µg/mL

IHC: 5 µg/mL

WB: 1-2 µg/mL

Formulation

Physical State: Liquid (sterile filtered)

Concentration: 1 mg/mL by UV absorbance at 280 nm

Buffer: 0.01 M Sodium Phosphate, 0.25 M Sodium Chloride, pH 7.2

Preservative: 0.02% (w/v) Sodium Azide

Stabilizer: None

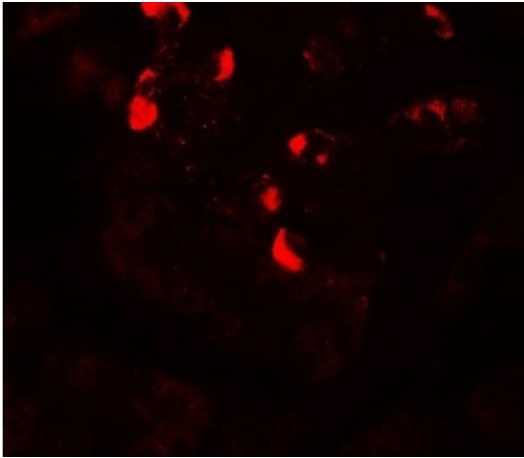
Shipping & Handling

Shipping Condition: Wet Ice

Storage Condition: Antibody can be stored at 4°C up to one year. Antibodies should not be exposed to prolonged high temperatures.

Expiration: Expiration date is one (1) year from date of receipt.

Images

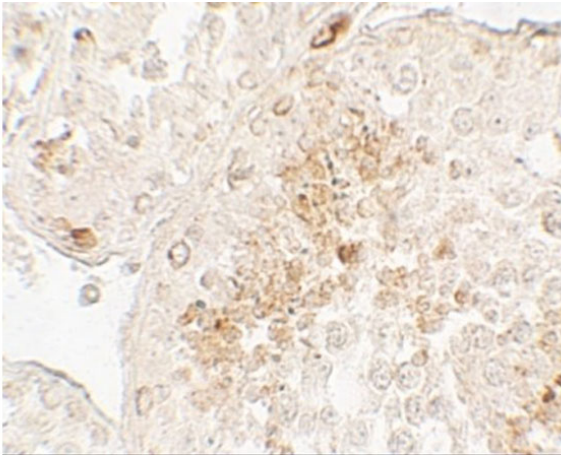


Immunofluorescence Microscopy

Immunofluorescence of GLIPR1L1.

Tissue: human testis tissue.

Primary Antibody: GLIPR1L1 antibody at 20 $\mu\text{g}/\text{mL}$.

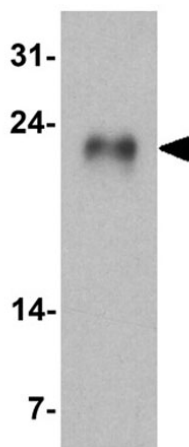


Immunohistochemistry

Immunohistochemistry of GLIPR1L1.

Tissue: human testis tissue.

Primary Antibody: GLIPR1L1 antibody at 5 $\mu\text{g}/\text{mL}$.

**Western Blot**

Western blot of GLIPR1L1.

Load: human testis tissue lysate.

Primary Antibody: GLIPR1L1 antibody at 1 μ g/ml.**Disclaimer**

This product is for research use only and is not intended for therapeutic or diagnostic applications. Please contact a technical service representative for more information. All products of animal origin manufactured by Rockland Immunochemicals are derived from starting materials of North American origin. Collection was performed in United States Department of Agriculture (USDA) inspected facilities and all materials have been inspected and certified to be free of disease and suitable for exportation. All properties listed are typical characteristics and are not specifications. All suggestions and data are offered in good faith but without guarantee as conditions and methods of use of our products are beyond our control. All claims must be made within 30 days following the date of delivery. The prospective user must determine the suitability of our materials before adopting them on a commercial scale. Suggested uses of our products are not recommendations to use our products in violation of any patent or as a license under any patent of Rockland Immunochemicals, Inc. If you require a commercial license to use this material and do not have one, then return this material, unopened to: Rockland Inc., P.O. BOX 5199, Limerick, Pennsylvania, USA.