

Datasheet for 600-401-BL0**GITRL Antibody****Overview**

Description:	Anti-GITRL (RABBIT) Antibody - 600-401-BL0
Item No.:	600-401-BL0
Size:	100 µg
Applications:	ELISA, IHC, WB
Reactivity:	Human, Mouse
Host Species:	Rabbit

Product Details

Background:	The tumor necrosis factor (TNF) and TNF receptor (TNFR) gene superfamilies regulate numerous biological functions including cell proliferation, differentiation, and survival through regulating the activation of the transcription factor NF-κB and various mitogen-activated protein kinases. The glucocorticoid-induced tumor necrosis factor receptor (GITR) is an emerging member of this family that is expressed on CD4+ CD25+ regulatory T cells and appears to have crucial immune regulation functions. Its ligand GITRL is expressed in endothelial and antigen-presenting cells and can activate NF-κB, induce both pro- and anti-apoptotic effects, inhibit the suppressive activity of regulatory T cells, and co-stimulate responder T cells through GITR. Dominant negative forms of NIK and TRAF2 expressed in transfected 293 cells substantially inhibited NF-κB activation, suggesting that the GITRL-GITR pathway involves both NIK and TRAF2.
Synonyms:	GITRL Antibody, TL6, AITRL, GITRL, hGITRL, TL6, UNQ149/PRO175, Tumor necrosis factor ligand superfamily member 18, Activation-inducible TNF-related ligand
Host Species:	Rabbit
Clonality:	Polyclonal
Format:	IgG

Target Details

Gene Name:	TNFSF18
Reactivity:	Human, Mouse
Immunogen Type:	Recombinant Protein

Immunogen:	Anti-GITRL antibody was prepared from whole rabbit serum produced by repeated immunizations with purified recombinant human GITR ligand.
Purity/Specificity:	Anti-GITRL Antibody is Protein A purified. Cross reactivity with GITRL from other sources has not been determined.
Relevant Links:	<ul style="list-style-type: none">• UniProtKB - Q9UNG2• GeneID - 8995• NCBI - NP_005083.2

Application Details

Tested Applications:	ELISA, IHC, WB
Application Note:	Anti-GITRL Antibody has been tested for use in ELISA, Western Blotting, Immunocytochemistry. Specific conditions for reactivity should be optimized by the end user. Expect a band at approximately 23 kDa in Western Blots of specific cell lysates and tissues. Observed 27kDa. Positive control: human pancreas tissue, mouse spleen tissue.
Assay Dilutions:	All assays should be optimized by the user. Recommended dilutions (if any) may be listed below.
ELISA:	1:10,000
WB:	1-4 µg/mL

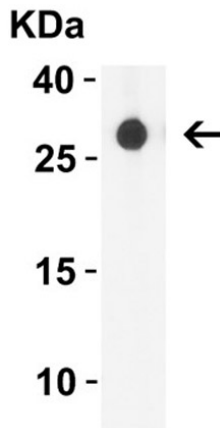
Formulation

Physical State:	Liquid (sterile filtered)
Concentration:	1 mg/mL by UV absorbance at 280 nm
Buffer:	0.01 M Sodium Phosphate, 0.25 M Sodium Chloride, pH 7.2
Preservative:	0.02% (w/v) Sodium Azide
Stabilizer:	None

Shipping & Handling

Shipping Condition:	Wet Ice
Storage Condition:	Store vial at 4°C for three months and -20°C, stable for up to one year. As with all antibodies care should be taken to avoid repeated freeze thaw cycles. Antibodies should not be exposed to prolonged high temperatures.
Expiration:	Expiration date is one (1) year from date of receipt.

Images



Western Blot

Western Blot Validation of GITRL.

Load: 10 μ g of Human Pancreas lysate.

Primary antibody: GITRL at 4 μ g/mL for 1 h incubation at RT in 5% NFDN/TBST.

Secondary: Goat Anti-Rabbit IgG HRP conjugate at 1:10000 dilution.



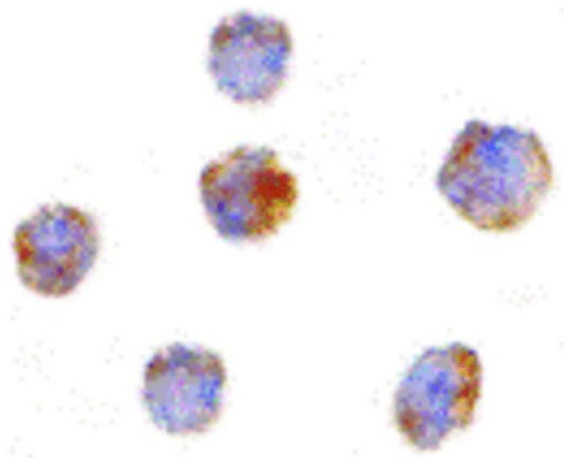
Western Blot

Western Blot Validation of GITRL.

Load: 10 μ g of Mouse Spleen lysate.

Primary antibody: GITRL at 4 μ g/mL for 1 h incubation at RT in 5% NFDN/TBST.

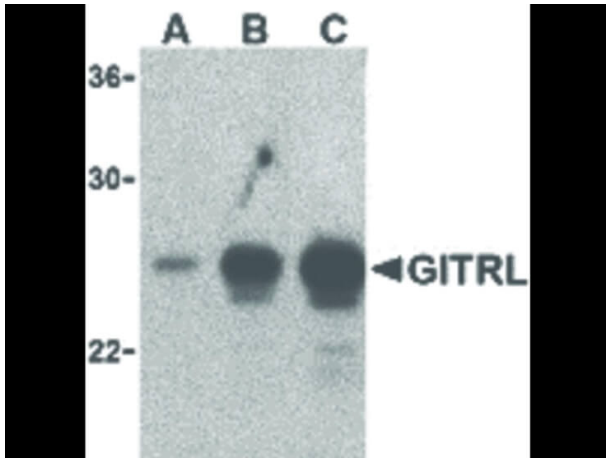
Secondary: Goat Anti-Rabbit IgG HRP conjugate at 1:10000 dilution.



Immunohistochemistry

Immunocytochemistry of GITRL antibody. Cell Type: THP-1 cells. Fixation: formalin fixed paraffin embedded. Antigen retrieval: not required. Primary antibody: GITRL antibody at 10 μ g/mL for 1 h at RT. Secondary antibody: Peroxidase rabbit secondary antibody at 1:10,000 for 45 min at RT. Localization: GITRL is located in the cell membrane.

Staining: GITRL is stained brown with hematoxylin purple nuclear counterstain.

**Western Blot**

Western Blot of GITRL antibody. Lane A: 5 ng of purified recombinant GITRL antibody with ITRL. Lane B: 25 ng of purified recombinant GITRL antibody with ITRL. Lane C: 50 ng of purified recombinant GITRL antibody with ITRL. Load: 35 μ g per lane. Primary antibody: GITRL antibody at 1 μ g/mL for overnight at 4°C. Secondary antibody: Peroxidase rabbit secondary antibody at 1:10,000 for 45 min at RT. Block: 5% BLOTTO overnight at 4°C. Predicted/Observed size: 23 kDa, 28 kDa for GITRL. Other band(s): GITRL splice variants and isoforms.

Disclaimer

This product is for research use only and is not intended for therapeutic or diagnostic applications. Please contact a technical service representative for more information. All products of animal origin manufactured by Rockland Immunochemicals are derived from starting materials of North American origin. Collection was performed in United States Department of Agriculture (USDA) inspected facilities and all materials have been inspected and certified to be free of disease and suitable for exportation. All properties listed are typical characteristics and are not specifications. All suggestions and data are offered in good faith but without guarantee as conditions and methods of use of our products are beyond our control. All claims must be made within 30 days following the date of delivery. The prospective user must determine the suitability of our materials before adopting them on a commercial scale. Suggested uses of our products are not recommendations to use our products in violation of any patent or as a license under any patent of Rockland Immunochemicals, Inc. If you require a commercial license to use this material and do not have one, then return this material, unopened to: Rockland Inc., P.O. BOX 5199, Limerick, Pennsylvania, USA.