

**Datasheet for 600-401-BJ0****GABARAP Antibody****Overview**

<b>Description:</b>	Anti-GABARAP (RABBIT) Antibody - 600-401-BJ0
<b>Item No.:</b>	600-401-BJ0
<b>Size:</b>	100 µg
<b>Applications:</b>	ELISA, IF, IHC, WB
<b>Reactivity:</b>	Human, Mouse, Rat
<b>Host Species:</b>	Rabbit

**Product Details**

<b>Background:</b>	Gamma-aminobutyric acid (GABA) is the main inhibitory transmitter by increasing a Cl <sup>-</sup> conductance that inhibits neuronal firing in the central nervous system. It has been shown to activate both ionotropic (GABAA) and metabotropic (GABAB) receptors as well as a third class of receptors called GABAC. GABARAP (GABAA receptor-associated protein) links GABAA receptors to the cytoskeleton and may play a role in intracellular transport of GABAA receptors and its interaction with the cytoskeleton. GABARAP belongs to the MAP1 or ATG8 like family and recent studies show that MAPK15/ERK8 is acting through interaction with ATG8 family proteins to regulate autophagy.
<b>Synonyms:</b>	GABARAP Antibody, MM46, ATG8A, GABARAP-a, FLC3B, HT004, Gamma-aminobutyric acid receptor-associated protein, MM46
<b>Host Species:</b>	Rabbit
<b>Clonality:</b>	Polyclonal
<b>Format:</b>	IgG

**Target Details**

<b>Gene Name:</b>	GABARAP
<b>Reactivity:</b>	Human, Mouse, Rat
<b>Immunogen Type:</b>	Conjugated Peptide
<b>Immunogen:</b>	Anti-GABARAP antibody was prepared from whole rabbit serum produced by repeated immunizations with a 19 amino acid peptide near the N-terminus of human GABARAP.

**Purity/Specificity:** Anti-GABARAP Antibody was affinity purified from monospecific antiserum by immunoaffinity chromatography. Multiple isoforms of GABARAP exist due to alternative splicing events.

**Relevant Links:**

- [UniProtKB - O95166](#)
- [GeneID - 11337](#)
- [NCBI - NP\\_009209](#)

## Application Details

**Tested Applications:** ELISA, IF, IHC, WB

**Application Note:** Anti-GABARAP Antibody has been tested for use in ELISA, Western Blotting, immunohistochemistry, and Immunofluorescence. Specific conditions for reactivity should be optimized by the end user. Expect a band at approximately 14 kDa in Western Blots of specific cell lysates and tissues.

**Assay Dilutions:** All assays should be optimized by the user. Recommended dilutions (if any) may be listed below.

**ELISA:** 1:10,000-1:20,000

**IF:** User Optimized

**IHC:** 5 µg/mL

**WB:** 1-2 µg/mL

## Formulation

**Physical State:** Liquid (sterile filtered)

**Concentration:** 1 mg/mL by UV absorbance at 280 nm

**Buffer:** 0.01 M Sodium Phosphate, 0.25 M Sodium Chloride, pH 7.2

**Preservative:** 0.02% (w/v) Sodium Azide

**Stabilizer:** None

## Shipping & Handling

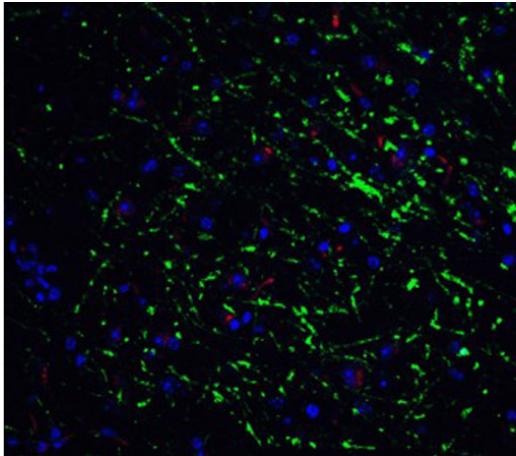
**Shipping Condition:** Dry Ice

**Storage Condition:** Store vial at -20° C prior to opening. Aliquot contents and freeze at -20° C or below for extended storage. Avoid cycles of freezing and thawing. Centrifuge product if not completely clear after standing at room temperature. This product is stable for several weeks at 4° C as an undiluted liquid. Dilute only prior to immediate use.

**Expiration:** Expiration date is one (1) year from date of receipt.

---

## Images



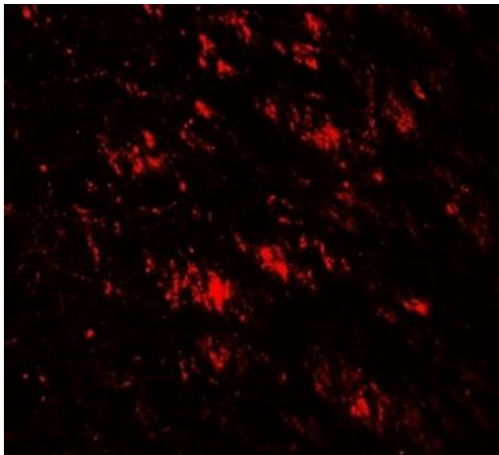
### **Immunofluorescence Microscopy**

Immunofluorescence of GABARAP.

Tissue: mouse brain tissue.

Primary Antibody: GABARAP Antibody at 20  $\mu\text{g}/\text{mL}$ .

Staining: GABARAP antibody (green); Phalloidin staining (red); DAPI staining (blue).

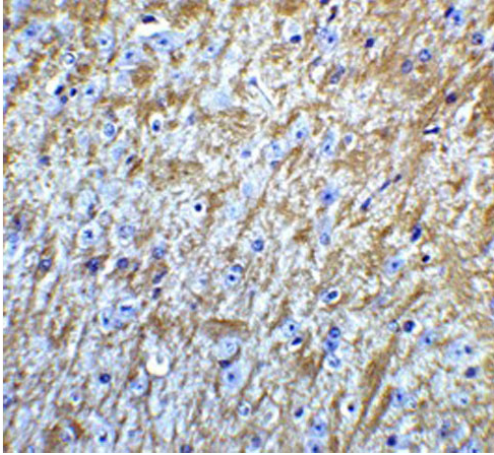


### **Immunofluorescence Microscopy**

Immunofluorescence of GABARAP.

Tissue: human brain tissue.

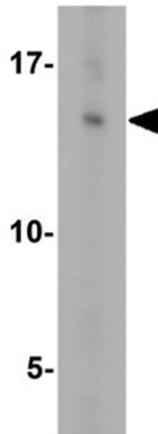
Primary Antibody: GABARAP antibody at 20  $\mu\text{g}/\text{mL}$ .

**Immunohistochemistry**

Immunohistochemistry of GABARAP.

Tissue: mouse brain tissue.

Primary Antibody: GABARAP Antibody at 5  $\mu\text{g}/\text{mL}$ .

**Western Blot**

Western blot of GABARAP.

Load: HeLa cell lysate.

Primary Antibody: GABARAP antibody at 1  $\mu\text{g}/\text{mL}$ .

**Disclaimer**

This product is for research use only and is not intended for therapeutic or diagnostic applications. Please contact a technical service representative for more information. All products of animal origin manufactured by Rockland Immunochemicals are derived from starting materials of North American origin. Collection was performed in United States Department of Agriculture (USDA) inspected facilities and all materials have been inspected and certified to be free of disease and suitable for exportation. All properties listed are typical characteristics and are not specifications. All suggestions and data are offered in good faith but without guarantee as conditions and methods of use of our products are beyond our control. All claims must be made within 30 days following the date of delivery. The prospective user must determine the suitability of our materials before adopting them on a commercial scale. Suggested uses of our products are not recommendations to use our products in violation of any patent or as a license under any patent of Rockland Immunochemicals, Inc. If you require a commercial license to use this material and do not have one, then return this material, unopened to: Rockland Inc., P.O. BOX 5199, Limerick, Pennsylvania, USA.