

Datasheet for 600-401-BH6

FRMPD3 Antibody

Overview

Description:	Anti-FRMPD3 (RABBIT) Antibody - 600-401-BH6
Item No.:	600-401-BH6
Size:	100 µg
Applications:	ELISA, IF, IHC, WB
Reactivity:	Human, Mouse
Host Species:	Rabbit

Product Details

Background:	The FERM and PDZ domain containing (FRMPD) protein family consists of four proteins that contain a FERM (Four-point-one, erzin, radixin, moesin) domain and at least one PDZ (PSD-95/Discs large/Zonula-occludens-1) domain. Unlike other members of the FRMPD family, FRMPD3 has no known function. It is most similar to FRMPD4, which is highly expressed in multiple regions of the brain and enriched in the postsynaptic density (PSD) fractions, it is possible that FRMPD3 also interacts with other PDZ domain-containing proteins in neural cells.
Synonyms:	FRMPD3 Antibody, KIAA1817, FERM and PDZ domain-containing protein 3
Host Species:	Rabbit
Clonality:	Polyclonal
Format:	IgG

Target Details

Gene Name:	FRMPD3
Reactivity:	Human, Mouse
Immunogen Type:	Conjugated Peptide
Immunogen:	Anti-FRMPD3 antibody was prepared from whole rabbit serum produced by repeated immunizations with an 18 amino acid synthetic peptide from near the internal region of human FRMPD3.

Purity/Specificity: Anti-FRMPD3 Antibody was affinity purified from monospecific antiserum by immunoaffinity chromatography. Cross reactivity with FRMPD3 from other sources has not been determined.

Relevant Links:

- [UniProtKB - Q5JV73](#)
- [GeneID - 84443](#)
- [NCBI - NP_115804.1](#)

Application Details

Tested Applications: ELISA, IF, IHC, WB

Application Note: Anti-FRMPD3 Antibody has been tested for use in ELISA, Western Blotting, Immunohistochemistry and Immunofluorescence. Specific conditions for reactivity should be optimized by the end user. Expect a band at approximately 199 kDa in Western Blots of specific cell lysates and tissues.

Assay Dilutions: All assays should be optimized by the user. Recommended dilutions (if any) may be listed below.

ELISA: 1:10,000 - 1:20,000

IF: 20 µg/mL

IHC: 5 µg/mL

WB: 1-2 µg/mL

Formulation

Physical State: Liquid (sterile filtered)

Concentration: 1 mg/mL by UV absorbance at 280 nm

Buffer: 0.01 M Sodium Phosphate, 0.25 M Sodium Chloride, pH 7.2

Preservative: 0.02% (w/v) Sodium Azide

Stabilizer: None

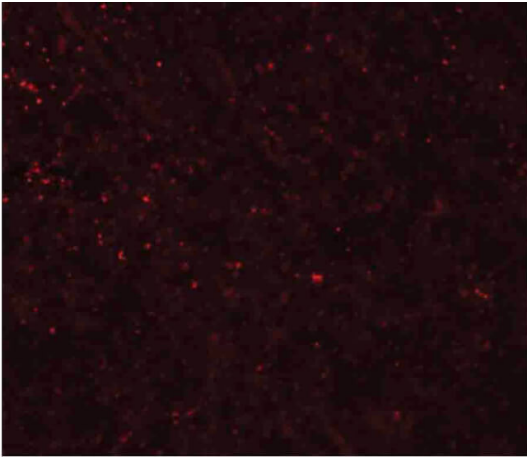
Shipping & Handling

Shipping Condition: Dry Ice

Storage Condition: Store vial at -20° C prior to opening. Aliquot contents and freeze at -20° C or below for extended storage. Avoid cycles of freezing and thawing. Centrifuge product if not completely clear after standing at room temperature. This product is stable for several weeks at 4° C as an undiluted liquid. Dilute only prior to immediate use.

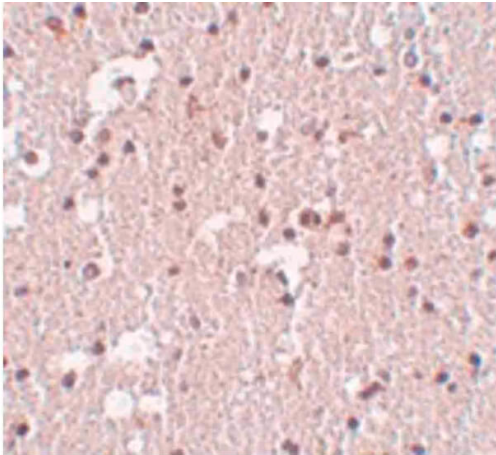
Expiration: Expiration date is one (1) year from date of receipt.

Images



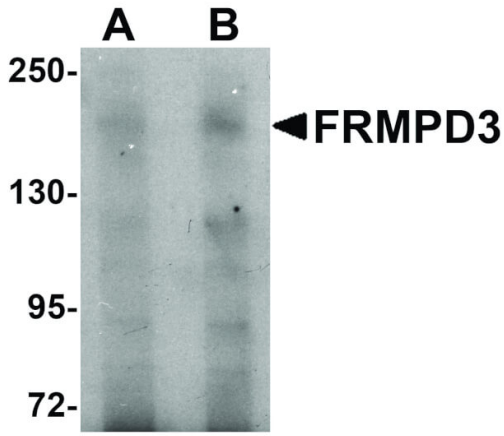
Immunofluorescence Microscopy

Immunofluorescence Microscopy of FRMPD3 antibody.
Tissue: Rat brain tissue. Fixation: 0.5% PFA. Antigen retrieval: not required. Primary antibody: FRMPD3 antibody at 20 $\mu\text{g}/\text{mL}$ for 1 h at RT. Secondary antibody: Fluorescein rabbit secondary antibody at 1:10,000 for 45 min at RT. Localization: FRMPD3 is localized in the cytoskeleton. Staining: FRMPD3 as red fluorescent signal.



Immunohistochemistry

Immunohistochemistry of FRMPD3 antibody. Tissue: Human brain tissue. Fixation: formalin fixed paraffin embedded. Antigen retrieval: not required. Primary antibody: FRMPD3 antibody at 5 $\mu\text{g}/\text{mL}$ for 1 h at RT. Secondary antibody: Peroxidase rabbit secondary antibody at 1:10,000 for 45 min at RT. Localization: FRMPD3 is localized in the cytoskeleton. Staining: FRMPD3 as precipitated brown signal with purple nuclear counterstain.

**Western Blot**

Western Blot of FRMPD3 antibody. Lane 1: Jurkat cell lysate with FRMPD3 antibody at 1 µg/mL. Lane 2: Jurkat cell lysate with FRMPD3 antibody at 2 µg/mL. Secondary antibody: Peroxidase rabbit secondary antibody at 1:10,000 for 45 min at RT. Block: 5% BLOTTO overnight at 4°C. Predicted/Observed size: 199 kDa, 199 kDa for FRMPD3. Other band(s): FRMPD3 splice variants and isoforms.

Disclaimer

This product is for research use only and is not intended for therapeutic or diagnostic applications. Please contact a technical service representative for more information. All products of animal origin manufactured by Rockland Immunochemicals are derived from starting materials of North American origin. Collection was performed in United States Department of Agriculture (USDA) inspected facilities and all materials have been inspected and certified to be free of disease and suitable for exportation. All properties listed are typical characteristics and are not specifications. All suggestions and data are offered in good faith but without guarantee as conditions and methods of use of our products are beyond our control. All claims must be made within 30 days following the date of delivery. The prospective user must determine the suitability of our materials before adopting them on a commercial scale. Suggested uses of our products are not recommendations to use our products in violation of any patent or as a license under any patent of Rockland Immunochemicals, Inc. If you require a commercial license to use this material and do not have one, then return this material, unopened to: Rockland Inc., P.O. BOX 5199, Limerick, Pennsylvania, USA.