

Datasheet for 600-401-BH4

FRMPD1 Antibody

Overview

Description:	Anti-FRMPD1 (RABBIT) Antibody - 600-401-BH4
Item No.:	600-401-BH4
Size:	100 µg
Applications:	ELISA, IF, WB
Reactivity:	Human
Host Species:	Rabbit

Product Details

Background: The FERM and PDZ domain containing (FRMPD) protein family consists of four proteins that contain a FERM (Four-point-one, erzin, radixin, moesin) domain and at least one PDZ (PSD-95/Discs large/Zonula-occludens-1) domain. FRMPD1 was initially identified through a yeast two-hybrid screening with Activator of G-protein signaling 3 (AGS3), a protein that acts to stabilize the GDP-bound conformation of Gai, as the bait. FRMPD1 binds to the tetratricopeptide repeat of AGS3 and stabilizes AGS3 in a membrane environment. Suppression of FRMPD1 in Cath.a-differentiated neuronal cells decreased the level of endogenous AGS3 in membrane fractions by ~50% and enhanced the inhibition of forskolin-induced increases in cAMP. Co-immunoprecipitation studies indicate that the interaction of AGS3 with FRMPD1 is mutually exclusive with the interaction of AGS3 with Gai3, suggesting that FRMPD1 may position AGS3 in the membrane where it can then interact with Galphai.

Synonyms:	FRMPD1 Antibody, FRMD2, FRMD2, KIAA0967, FERM and PDZ domain-containing protein 1, FERM domain-containing protein 2
Host Species:	Rabbit
Clonality:	Polyclonal
Format:	IgG

Target Details

Gene Name:	FRMPD1
Reactivity:	Human

Immunogen Type:	Conjugated Peptide
Immunogen:	Anti-FRMPD1 antibody was prepared from whole rabbit serum produced by repeated immunizations with a 15 amino acid synthetic peptide from near the C-terminus of human FRMPD1.
Purity/Specificity:	Anti-FRMPD1 Antibody was affinity purified from monospecific antiserum by immunoaffinity chromatography. Cross reactivity with FRMPD1 from other sources has not been determined.
Relevant Links:	<ul style="list-style-type: none">• UniProtKB - Q5SYB0• GenelD - 22844• NCBI - NP_055722

Application Details

Tested Applications:	ELISA, IF, WB
Application Note:	Anti-FRMPD1 Antibody has been tested for use in ELISA, Western Blotting and Immunofluorescence. Specific conditions for reactivity should be optimized by the end user. Expect a band at approximately 173 kDa in Western Blots of specific cell lysates and tissues.
Assay Dilutions:	All assays should be optimized by the user. Recommended dilutions (if any) may be listed below.
ELISA:	1:10,000-1:20,000
IF:	20 µg/mL
WB:	1-2 µg/mL

Formulation

Physical State:	Liquid (sterile filtered)
Concentration:	1.0 mg/ml by UV absorbance at 280 nm
Buffer:	0.01 M Sodium Phosphate, 0.25 M Sodium Chloride, pH 7.2
Preservative:	0.02% (w/v) Sodium Azide
Stabilizer:	None

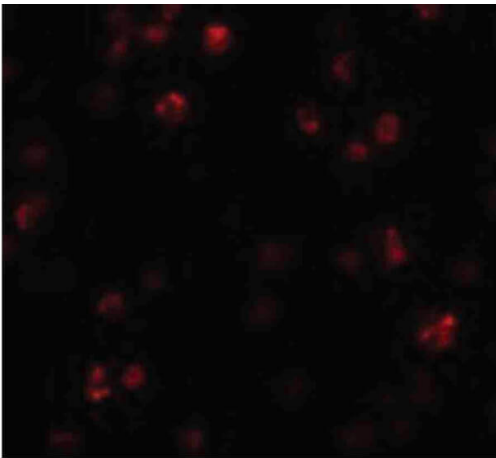
Shipping & Handling

Shipping Condition:	Dry Ice
----------------------------	---------

Storage Condition: Store vial at -20° C prior to opening. Aliquot contents and freeze at -20° C or below for extended storage. Avoid cycles of freezing and thawing. Centrifuge product if not completely clear after standing at room temperature. This product is stable for several weeks at 4° C as an undiluted liquid. Dilute only prior to immediate use.

Expiration: Expiration date is one (1) year from date of receipt.

Images

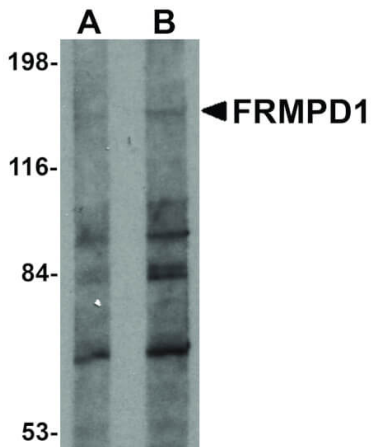


Immunofluorescence Microscopy

Immunofluorescence Microscopy of FRMPD1 antibody.

Tissue: K562 cells. Fixation: 0.5% PFA. Antigen retrieval: not required. Primary antibody: FRMPD1 antibody at 20 µg/mL for 1 h at RT. Secondary antibody: Fluorescein rabbit secondary antibody at 1:10,000 for 45 min at RT.

Localization: FRMPD1 is cytoplasmic. Staining: FRMPD1 as red fluorescent signal.



Western Blot

Western Blot of FRMPD1 antibody. Lane 1: K562 cell lysate with FRMPD1 antibody at 1 µg/mL. Lane 2: K562 cell lysate with FRMPD1 antibody at 2 µg/mL. Secondary antibody: Peroxidase rabbit secondary antibody at 1:10,000 for 45 min at RT. Block: 5% BLOTTO overnight at 4°C.

Predicted/Observed size: 173 kDa, 173 kDa for FRMPD1.

Other band(s): FRMPD1 splice variants and isoforms.

Disclaimer

This product is for research use only and is not intended for therapeutic or diagnostic applications. Please contact a technical service representative for more information. All products of animal origin manufactured by Rockland Immunochemicals are derived from starting materials of North American origin. Collection was performed in United States Department of Agriculture (USDA) inspected facilities and all materials have been inspected and certified to be free of disease and suitable for exportation. All properties listed are typical characteristics and are not specifications. All suggestions and data are offered in good faith but without guarantee as conditions and methods of use of our products are beyond our control. All claims must be made within 30 days following the date of delivery. The prospective user must determine the suitability of our materials before adopting them on a commercial scale. Suggested uses of our products are not recommendations to use our products in violation of any patent or as a license under any patent of Rockland Immunochemicals, Inc. If you require a commercial license to use this material and do not have one, then return this material, unopened to: Rockland Inc., P.O. BOX 5199, Limerick, Pennsylvania, USA.