

Datasheet for 600-401-BH0

FOXRED2 Antibody

Overview

Description:	Anti-FOXRED2 (RABBIT) Antibody - 600-401-BH0
Item No.:	600-401-BH0
Size:	100 µg
Applications:	ELISA, IF, WB
Reactivity:	Human
Host Species:	Rabbit

Product Details

Background:	FOXRED2, also known as ERFAD, is an endoplasmic reticulum (ER) luminal flavoprotein which may function in ER associated degradation (ERAD). It has been proposed to bind non-native proteins in the endoplasmic reticulum and target them to the ubiquitination machinery for subsequent degradation. Upon knockdown of FOXRED2, the degradation of the ERAD model substrate ribophorin 332 is delayed, and the overall level of polyubiquitinated cellular proteins is decreased. Defects in the related protein FOXRED1 are a cause of mitochondrial complex I deficiency (MT-C1D), suggesting the FOXRED2 may also play a role in MT-C1D.
Synonyms:	FOXRED2 Antibody, ERFAD, ERFAD, FAD-dependent oxidoreductase domain-containing protein 2, Endoplasmic reticulum flavoprotein associated with degradation
Host Species:	Rabbit
Clonality:	Polyclonal
Format:	IgG

Target Details

Gene Name:	FOXRED2
Reactivity:	Human
Immunogen Type:	Conjugated Peptide
Immunogen:	Anti-FOXRED2 antibody was prepared from whole rabbit serum produced by repeated immunizations with a 17 amino acid synthetic peptide near the N-terminus of human FOXRED2.

Purity/Specificity:	Anti-FOXRED2 Antibody was affinity purified from monospecific antiserum by immunoaffinity chromatography. Cross reactivity with FOXRED2 from other sources has not been determined.
Relevant Links:	<ul style="list-style-type: none">• UniProtKB - Q8IWF2• GeneID - 80020• NCBI - No. Q8IWF2

Application Details

Tested Applications:	ELISA, IF, WB
Application Note:	Anti-FOXRED2 Antibody has been tested for use in ELISA, Western Blotting and Immunofluorescence. Specific conditions for reactivity should be optimized by the end user. Expect a band at approximately 78 kDa in Western Blots of specific cell lysates and tissues.
Assay Dilutions:	All assays should be optimized by the user. Recommended dilutions (if any) may be listed below.
ELISA:	1:10,000
IF:	20 µg/mL
WB:	1 µg/mL

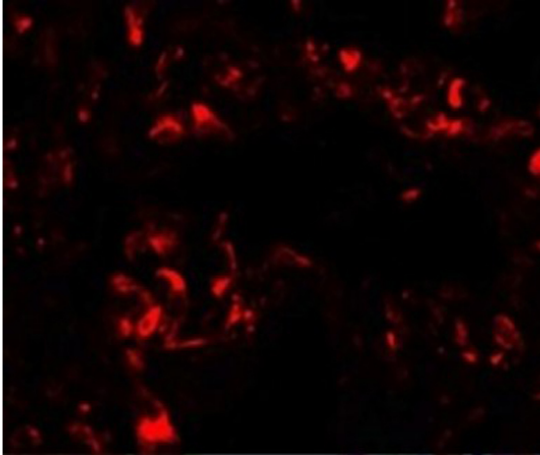
Formulation

Physical State:	Liquid (sterile filtered)
Concentration:	1 mg/mL by UV absorbance at 280 nm
Buffer:	0.01 M Sodium Phosphate, 0.25 M Sodium Chloride, pH 7.2
Preservative:	0.02% (w/v) Sodium Azide
Stabilizer:	None

Shipping & Handling

Shipping Condition:	Dry Ice
Storage Condition:	Store vial at -20° C prior to opening. Aliquot contents and freeze at -20° C or below for extended storage. Avoid cycles of freezing and thawing. Centrifuge product if not completely clear after standing at room temperature. This product is stable for several weeks at 4° C as an undiluted liquid. Dilute only prior to immediate use.
Expiration:	Expiration date is one (1) year from date of receipt.

Images

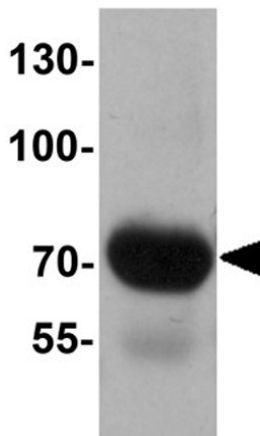


Immunofluorescence Microscopy

Immunofluorescence of FOXRED2.

Tissue: human lung cells.

Primary Antibody: FOXRED2 antibody at 20 µg/mL.



Western Blot

Western blot analysis of FOXRED2.

Load: human lung tissue lysate.

Primary Antibody: FOXRED2 antibody at 1 µg/mL.

Disclaimer

This product is for research use only and is not intended for therapeutic or diagnostic applications. Please contact a technical service representative for more information. All products of animal origin manufactured by Rockland Immunochemicals are derived from starting materials of North American origin. Collection was performed in United States Department of Agriculture (USDA) inspected facilities and all materials have been inspected and certified to be free of disease and suitable for exportation. All properties listed are typical characteristics and are not specifications. All suggestions and data are offered in good faith but without guarantee as conditions and methods of use of our products are beyond our control. All claims must be made within 30 days following the date of delivery. The prospective user must determine the suitability of our materials before adopting them on a commercial scale. Suggested uses of our products are not recommendations to use our products in violation of any patent or as a license under any patent of Rockland Immunochemicals, Inc. If you require a commercial license to use this material and do not have one, then return this material, unopened to: Rockland Inc., P.O. BOX 5199, Limerick, Pennsylvania, USA.