

**Datasheet for 600-401-BG6****FOXO3 Antibody****Overview**

<b>Description:</b>	Anti-FOXO3 (RABBIT) Antibody - 600-401-BG6
<b>Item No.:</b>	600-401-BG6
<b>Size:</b>	100 µg
<b>Applications:</b>	ELISA, IF, IHC, WB
<b>Reactivity:</b>	Human, Mouse, Rat
<b>Host Species:</b>	Rabbit

**Product Details**

<b>Background:</b>	FOXO3 is a ubiquitously expressed 75 kDa protein member of a subfamily of the forkhead homeotic gene family of transcription factors and shuttles between the cytoplasm and nucleus. FOXO transcription factors are key players of cell fate decisions, metabolism, stress resistance, tumor suppression and are regulated by growth factors, oxidative stress or nutrient deprivation. FOXO3 is involved with mTOR in the regulation of autophagy in skeletal muscle, and activates protein degradation in atrophying muscle cells. FOXO3 has also been implicated in several neurodegenerative disorders including aging, neuromuscular disease, systemic lupus erythmatosus, stroke and diabetic complications.
<b>Synonyms:</b>	FOXO3 Antibody, FOXO2, AF6q21, FKHL1, FOXO3A, FKHL1P2, Forkhead box protein O3, AF6q21 protein
<b>Host Species:</b>	Rabbit
<b>Clonality:</b>	Polyclonal
<b>Format:</b>	IgG

**Target Details**

<b>Gene Name:</b>	FOXO3
<b>Reactivity:</b>	Human, Mouse, Rat
<b>Immunogen Type:</b>	Conjugated Peptide
<b>Immunogen:</b>	Anti-FOXO3 antibody was prepared from whole rabbit serum produced by repeated immunizations with an 18 amino acid synthetic peptide near the N-terminus of human FOXO3.

**Purity/Specificity:** Anti-FOXO3 Antibody was affinity purified from monospecific antiserum by immunoaffinity chromatography. Cross reactivity with FOXO3 from other sources has not been determined.

**Relevant Links:**

- [UniProtKB - O43524](#)
- [GeneID - 2309](#)
- [NCBI - NP\\_963853](#)

## Application Details

**Tested Applications:** ELISA, IF, IHC, WB

**Application Note:** Anti-FOXO3 Antibody has been tested for use in ELISA, Western Blotting, Immunocytochemistry and Immunofluorescence. Specific conditions for reactivity should be optimized by the end user. Expect a band at approximately 72 kDa in Western Blots of specific cell lysates and tissues.

**Assay Dilutions:** All assays should be optimized by the user. Recommended dilutions (if any) may be listed below.

**ELISA:** 1:5000 - 1:10000

**IF:** 20 µg/mL

**WB:** 0.5-1 µg/mL

## Formulation

**Physical State:** Liquid (sterile filtered)

**Concentration:** 1 mg/mL by UV absorbance at 280 nm

**Buffer:** 0.01 M Sodium Phosphate, 0.25 M Sodium Chloride, pH 7.2

**Preservative:** 0.02% (w/v) Sodium Azide

**Stabilizer:** None

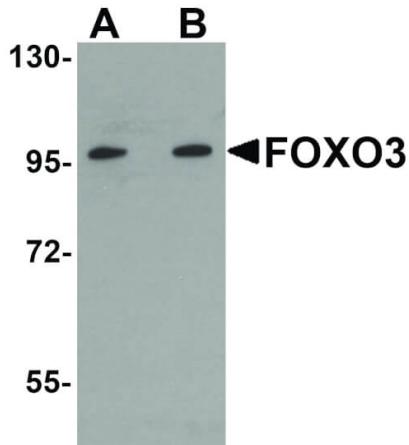
## Shipping & Handling

**Shipping Condition:** Dry Ice

**Storage Condition:** Store vial at -20° C prior to opening. Aliquot contents and freeze at -20° C or below for extended storage. Avoid cycles of freezing and thawing. Centrifuge product if not completely clear after standing at room temperature. This product is stable for several weeks at 4° C as an undiluted liquid. Dilute only prior to immediate use.

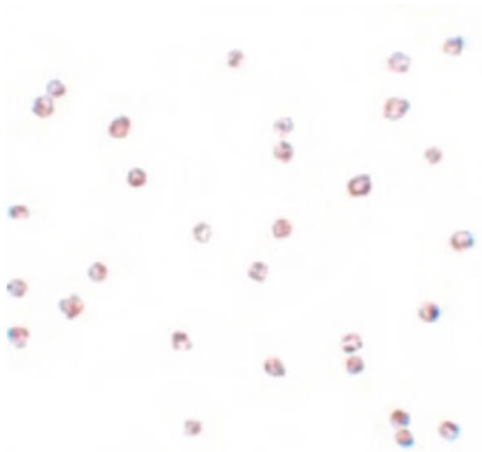
**Expiration:** Expiration date is one (1) year from date of receipt.

## Images



### Western Blot

Western Blot of FOXO3 antibody. Lane 1: A20 cell lysate with FOXO3 antibody at 0.5 µg/mL. Lane 2: A20 cell lysate with FOXO3 antibody at 1 µg/mL. Secondary antibody: Peroxidase rabbit secondary antibody at 1:10,000 for 45 min at RT. Block: 5% BLOTTO overnight at 4°C. Predicted/Observed size: 72 kDa, 96 kDa for FOXO3. Other band(s): FOXO3 splice variants and isoforms.



### Immunohistochemistry

Immunocytochemistry of FOXO3 antibody. Tissue: A20 cells. Fixation: formalin fixed paraffin embedded. Antigen retrieval: not required. Primary antibody: FOXO3 antibody at 4 µg/mL for 1 h at RT. Secondary antibody: Peroxidase rabbit secondary antibody at 1:10,000 for 45 min at RT. Localization: FOXO3 is a Nuclear and cytoplasmic. Staining: FOXO3 as precipitated blue signal with pink nuclear counterstain.

## Disclaimer

This product is for research use only and is not intended for therapeutic or diagnostic applications. Please contact a technical service representative for more information. All products of animal origin manufactured by Rockland Immunochemicals are derived from starting materials of North American origin. Collection was performed in United States Department of Agriculture (USDA) inspected facilities and all materials have been inspected and certified to be free of disease and suitable for exportation. All properties listed are typical characteristics and are not specifications. All suggestions and data are offered in good faith but without guarantee as conditions and methods of use of our products are beyond our control. All claims must be made within 30 days following the date of delivery. The prospective user must determine the suitability of our materials before adopting them on a commercial scale. Suggested uses of our products are not recommendations to use our products in violation of any patent or as a license under any patent of Rockland Immunochemicals, Inc. If you require a commercial license to use this material and do not have one, then return this material, unopened to: Rockland Inc., P.O. BOX 5199, Limerick, Pennsylvania, USA.