

Datasheet for 600-401-BF5**FLT3 Antibody****Overview**

Description:	Anti-FLT3 (RABBIT) Antibody - 600-401-BF5
Item No.:	600-401-BF5
Size:	100 µg
Applications:	ELISA, IF, WB
Reactivity:	Human, Mouse
Host Species:	Rabbit

Product Details

Background:	FLT3 is a member of the class III receptor tyrosine kinase family and its internal tandem duplication (ITD) is preferentially seen in acute myeloid leukemia and myelodysplastic syndrome among various hematological malignancies. It is a membrane bound glycosylated protein that is expressed primarily in early hematopoietic progenitor cells. Upon binding its ligand FL, FLT3 activates multiple signaling pathways including the PI3K/Akt and Ras/MEK/MAPK pathways. In cells expressing FLT3-ITD, these pathways are constitutively on, resulting in abnormal cell growth and anti-apoptotic activity.
Synonyms:	FLT3 Antibody, FLK2, STK1, CD135, FLK-2, FLK2, Receptor-type tyrosine-protein kinase FLT3, FL cytokine receptor
Host Species:	Rabbit
Clonality:	Polyclonal
Format:	IgG

Target Details

Gene Name:	FLT3
Reactivity:	Human, Mouse
Immunogen Type:	Conjugated Peptide
Immunogen:	Anti-FLT3 antibody was prepared from whole rabbit serum produced by repeated immunizations with an 18 amino acid synthetic peptide near the internal region of human FLT3.

Purity/Specificity:	Anti-FLT3 Antibody was affinity purified from monospecific antiserum by immunoaffinity chromatography. At least three isoforms of FLT3 are known to exist; this antibody will detect all isoforms.
Relevant Links:	<ul style="list-style-type: none">• UniProtKB - P36888• GeneID - 2322• NCBI - NP_004110

Application Details

Tested Applications:	ELISA, IF, WB
Application Note:	Anti-FLT3 Antibody has been tested for use in ELISA, Western Blotting and Immunofluorescence. Specific conditions for reactivity should be optimized by the end user. Expect a band at approximately 113 kDa in Western Blots of specific cell lysates and tissues.
Assay Dilutions:	All assays should be optimized by the user. Recommended dilutions (if any) may be listed below.
ELISA:	1:10,000 - 1:20,000
IF:	20 µg/mL
WB:	1-2 µg/mL

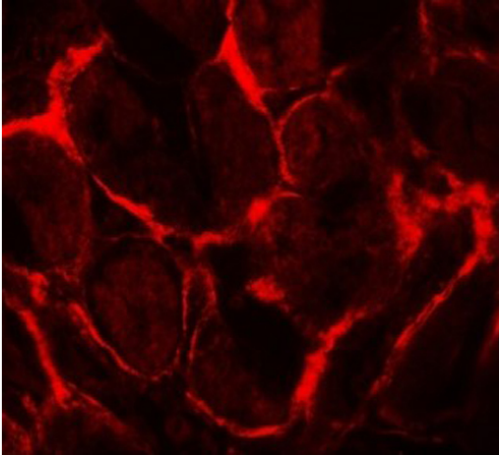
Formulation

Physical State:	Liquid (sterile filtered)
Concentration:	1 mg/mL by UV absorbance at 280 nm
Buffer:	0.01 M Sodium Phosphate, 0.25 M Sodium Chloride, pH 7.2
Preservative:	0.02% (w/v) Sodium Azide
Stabilizer:	None

Shipping & Handling

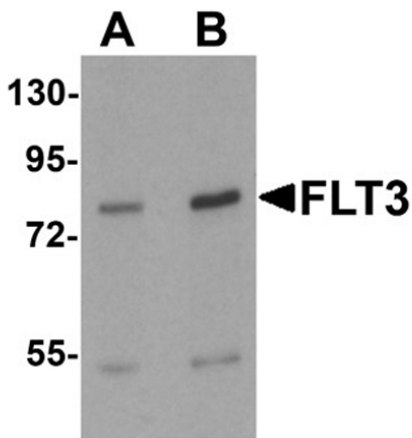
Shipping Condition:	Dry Ice
Storage Condition:	Store vial at -20° C prior to opening. Aliquot contents and freeze at -20° C or below for extended storage. Avoid cycles of freezing and thawing. Centrifuge product if not completely clear after standing at room temperature. This product is stable for several weeks at 4° C as an undiluted liquid. Dilute only prior to immediate use.
Expiration:	Expiration date is one (1) year from date of receipt.

Images



Immunofluorescence Microscopy

Immunofluorescence of FLT3.
Tissue: human kidney tissue.
Primary Antibody: FLT3 antibody at 20 µg/mL.



Western Blot

Western blot analysis of FLT3.
Load: 3T3 cell lysate.
Primary Antibody: FLT3 antibody at (A) 1 and (B) 2 µg/mL.

Disclaimer

This product is for research use only and is not intended for therapeutic or diagnostic applications. Please contact a technical service representative for more information. All products of animal origin manufactured by Rockland Immunochemicals are derived from starting materials of North American origin. Collection was performed in United States Department of Agriculture (USDA) inspected facilities and all materials have been inspected and certified to be free of disease and suitable for exportation. All properties listed are typical characteristics and are not specifications. All suggestions and data are offered in good faith but without guarantee as conditions and methods of use of our products are beyond our control. All claims must be made within 30 days following the date of delivery. The prospective user must determine the suitability of our materials before adopting them on a commercial scale. Suggested uses of our products are not recommendations to use our products in violation of any patent or as a license under any patent of Rockland Immunochemicals, Inc. If you require a commercial license to use this material and do not have one, then return this material, unopened to: Rockland Inc., P.O. BOX 5199, Limerick, Pennsylvania, USA.