

Datasheet for 600-401-BF3**FLIP Antibody****Overview**

Description:	Anti-FLIP (RABBIT) Antibody - 600-401-BF3
Item No.:	600-401-BF3
Size:	100 µg
Applications:	ELISA, FC, IF, IHC, WB
Reactivity:	Human, Mouse, Rat
Host Species:	Rabbit

Product Details

Background:	Apoptosis is related to many diseases and induced by a family of cell death receptors and their ligands. Cell death signals are transduced by death domain (DD)- containing adapter molecules and members of the ICE/CED-3 protease family. Caspases-8 (FLICE) and -10 (FLICE2) are two pivotal members in the ICE/CED-3 protease family. FLICE-inhibitory proteins were identified in virus and human and designated v-FLIPs and FLIP, respectively. The human FLIP was also cloned by several labs independently and termed Casper, I-FLICE, FLAME-1, CASH and CLARP3-7. FLIP contains two death effector domains (DEDs) and a caspase-like domain. FLIP interacts with adapter protein FADD and caspase-8 and 10, and potently inhibits apoptosis induced by all known death receptors. Four splice variants of c-FLIPs have been identified and termed FLIPalpha, beta, gamma, and delta, respectively.
Synonyms:	FLIP Antibody, CASH, FLIP, MRIT, CLARP, FLAME, Casper, FLAME1, c-FLIP, FLAME-1, I-FLICE, c-FLIPL, c-FLIPR, c-FLIPS, CASP8AP1, CASH, CASP8 and FADD-like apoptosis regulator, Caspase homolog
Host Species:	Rabbit
Clonality:	Polyclonal
Format:	IgG

Target Details

Gene Name:	CFLAR
Reactivity:	Human, Mouse, Rat

Immunogen Type:	Conjugated Peptide
Immunogen:	Anti-FLIP antibody was prepared from whole rabbit serum produced by repeated immunizations with a peptide corresponding to amino acids near the N-terminus of human FLIP. The sequence is identical in all FLIP splice variants.
Purity/Specificity:	Anti-FLIP Antibody was affinity purified from monospecific antiserum by immunoaffinity chromatography. FLIP recognizes all FLIP splice variants including FLIPa, b, and γ .
Relevant Links:	<ul style="list-style-type: none">• UniProtKB - O15519• GenelD - 8837• NCBI - AAC51622

Application Details

Tested Applications:	ELISA, FC, IF, IHC, WB
Application Note:	Anti-FLIP Antibody has been tested for use in ELISA, Western Blotting, Immunohistochemistry, Immunofluorescence, and Fluorescence Activated Cell-Sorting. Specific conditions for reactivity should be optimized by the end user. Expect a band at approximately 55 kDa in Western Blots of specific cell lysates and tissues.
Assay Dilutions:	All assays should be optimized by the user. Recommended dilutions (if any) may be listed below.
ELISA:	1:10,000-1:20,000
IF:	20 $\mu\text{g}/\text{mL}$
IHC:	5 $\mu\text{g}/\text{mL}$
WB:	1-2 $\mu\text{g}/\text{mL}$

Formulation

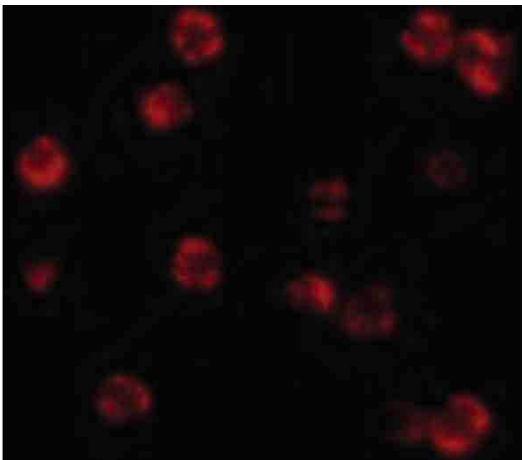
Physical State:	Liquid (sterile filtered)
Concentration:	1 mg/mL by UV absorbance at 280 nm
Buffer:	0.01 M Sodium Phosphate, 0.25 M Sodium Chloride, pH 7.2
Preservative:	0.02% (w/v) Sodium Azide
Stabilizer:	None

Shipping & Handling

Shipping Condition:	Dry Ice
----------------------------	---------

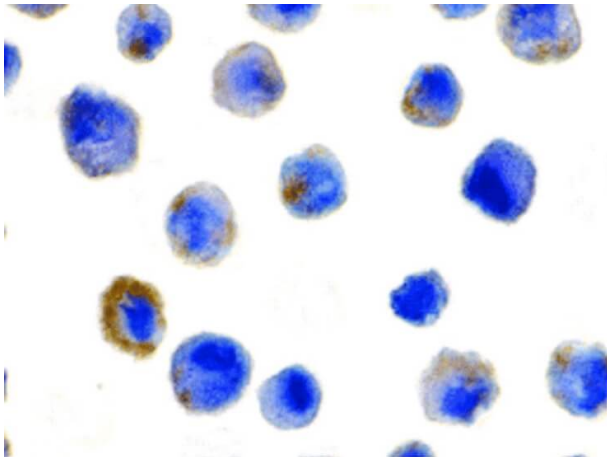
Storage Condition:	Store vial at -20° C prior to opening. Aliquot contents and freeze at -20° C or below for extended storage. Avoid cycles of freezing and thawing. Centrifuge product if not completely clear after standing at room temperature. This product is stable for several weeks at 4° C as an undiluted liquid. Dilute only prior to immediate use.
Expiration:	Expiration date is one (1) year from date of receipt.

Images



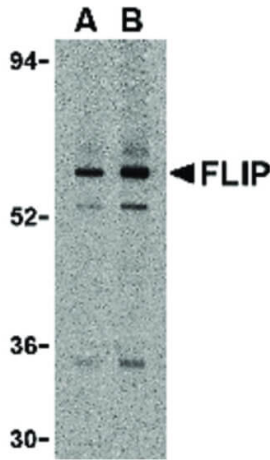
Immunofluorescence Microscopy

Immunofluorescence Microscopy of Rabbit anti-FLIP antibody. Cell Type: HeLa cells. Fixation: 0.5% PFA. Antigen retrieval: not required. Primary antibody: anti-FLIP antibody at 20 µg/mL for 1 h at RT. Secondary antibody: Fluorescein rabbit secondary antibody at 1:10,000 for 45 min at RT. Localization: FLIP is cytoplasmic. Staining: FLIP as red fluorescent signal with bis- benzimide (blue) nuclear counterstain.



Immunohistochemistry

Immunocytochemistry of Rabbit anti-FLIP antibody. Cell Type: HeLa cells. Fixation: formalin fixed paraffin embedded. Antigen retrieval: not required. Primary antibody: anti-FLIP antibody at 5 µg/mL for 1 h at RT. Secondary antibody: Peroxidase rabbit secondary antibody at 1:10,000 for 45 min at RT. Localization: FLIP is cytoplasmic. Staining: FLIP as precipitated brown signal with hematoxylin purple nuclear counterstain.

**Western Blot**

Western Blot of Rabbit anti-FLIP antibody. Lane 1: K562 cell lysate with anti-FLIP antibody at 1 $\mu\text{g/ml}$. Lane 2: K562 cell lysate with anti-FLIP antibody at 2 $\mu\text{g/ml}$. Load: 35 μg per lane. Secondary antibody: Peroxidase rabbit secondary antibody at 1:10,000 for 45 min at RT. Block: 5% BLOTTO overnight at 4°C. Predicted/Observed size: 55.3 kDa, 55 kDa for FLIP. Other band(s): FLIP splice variants and isoforms.

Disclaimer

This product is for research use only and is not intended for therapeutic or diagnostic applications. Please contact a technical service representative for more information. All products of animal origin manufactured by Rockland Immunochemicals are derived from starting materials of North American origin. Collection was performed in United States Department of Agriculture (USDA) inspected facilities and all materials have been inspected and certified to be free of disease and suitable for exportation. All properties listed are typical characteristics and are not specifications. All suggestions and data are offered in good faith but without guarantee as conditions and methods of use of our products are beyond our control. All claims must be made within 30 days following the date of delivery. The prospective user must determine the suitability of our materials before adopting them on a commercial scale. Suggested uses of our products are not recommendations to use our products in violation of any patent or as a license under any patent of Rockland Immunochemicals, Inc. If you require a commercial license to use this material and do not have one, then return this material, unopened to: Rockland Inc., P.O. BOX 5199, Limerick, Pennsylvania, USA.