

Datasheet for 600-401-BF1**FLI1 Antibody****Overview**

Description:	Anti-FLI1 (RABBIT) Antibody - 600-401-BF1
Item No.:	600-401-BF1
Size:	100 µg
Applications:	ELISA, IF, WB
Reactivity:	Human, Mouse, Rat
Host Species:	Rabbit

Product Details

Background:	The Friend leukemia virus integration 1 (FLI1) protein is a transcription factor containing an ETS DNA-binding domain and is highly expressed in hematopoietic cell lineages and vascular endothelial cells (1). FLI1 plays important roles in megakaryocytic differentiation (2) and vascular homeostasis (3). The FLI1 gene can undergo a t(11;22)(q24;q12) translocation with the Ewing sarcoma gene on chromosome 22, which results in a fusion gene that is present in the majority of Ewing sarcoma cases. (4). Abnormal expression of FLI1 can be used as an adverse prognostic indicator for acute myeloid leukemia (5).
Synonyms:	FLI1 Antibody , ATOD2, Filaggrin
Host Species:	Rabbit
Clonality:	Polyclonal
Format:	IgG

Target Details

Gene Name:	FLI1
Reactivity:	Human, Mouse, Rat
Immunogen Type:	Conjugated Peptide
Immunogen:	Anti-FLI1 antibody was prepared from whole rabbit serum produced by repeated immunizations with a 17 amino acid peptide near the C-terminus of human FLI1.

Purity/Specificity:	Anti-FLI1 Antibody was affinity purified from monospecific antiserum by immunoaffinity chromatography. FLI1 antibody is human, mouse and rat reactive. At least four isoforms of FLI1 are known to exist; this antibody will detect all four.
Relevant Links:	<ul style="list-style-type: none">• UniProtKB - P20930• GeneID - 2312• NCBI - NP_002008

Application Details

Tested Applications:	ELISA, IF, WB
Application Note:	Anti-FLI1 Antibody has been tested for use in ELISA, Western Blotting and Immunofluorescence. Specific conditions for reactivity should be optimized by the end user. Expect a band at approximately 435 kDa in Western Blots of specific cell lysates and tissues.
Assay Dilutions:	All assays should be optimized by the user. Recommended dilutions (if any) may be listed below.
ELISA:	User Optimized
IF:	User Optimized
WB:	User Optimized

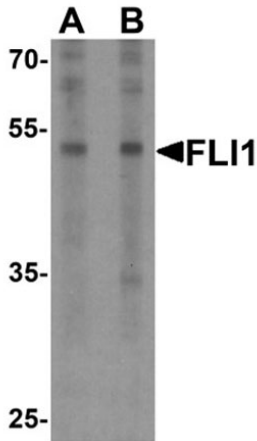
Formulation

Physical State:	Liquid (sterile filtered)
Concentration:	1.0 mg/mL by UV absorbance at 280 nm
Buffer:	0.01 M Sodium Phosphate, 0.25 M Sodium Chloride, pH 7.2
Preservative:	0.02% (w/v) Sodium Azide
Stabilizer:	None

Shipping & Handling

Shipping Condition:	Dry Ice
Storage Condition:	Store vial at -20° C prior to opening. Aliquot contents and freeze at -20° C or below for extended storage. Avoid cycles of freezing and thawing. Centrifuge product if not completely clear after standing at room temperature. This product is stable for several weeks at 4° C as an undiluted liquid. Dilute only prior to immediate use.
Expiration:	Expiration date is one (1) year from date of receipt.

Images

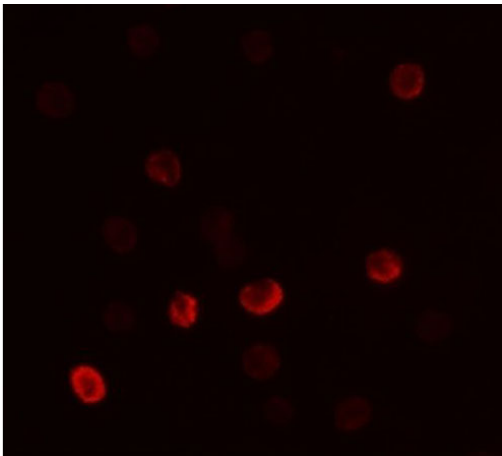


Western Blot

Western blot of FLI1.

Load: Jurkat cell lysate.

Primary Antibody: FLI1 antibody at (A) 0.5 and (B) 1 μ g/ml.



Immunofluorescence Microscopy

Immunofluorescence of FLI1.

Cell: HeLa cells.

Primary Antibody: FLI1 antibody at 5 μ g/mL.

Disclaimer

This product is for research use only and is not intended for therapeutic or diagnostic applications. Please contact a technical service representative for more information. All products of animal origin manufactured by Rockland Immunochemicals are derived from starting materials of North American origin. Collection was performed in United States Department of Agriculture (USDA) inspected facilities and all materials have been inspected and certified to be free of disease and suitable for exportation. All properties listed are typical characteristics and are not specifications. All suggestions and data are offered in good faith but without guarantee as conditions and methods of use of our products are beyond our control. All claims must be made within 30 days following the date of delivery. The prospective user must determine the suitability of our materials before adopting them on a commercial scale. Suggested uses of our products are not recommendations to use our products in violation of any patent or as a license under any patent of Rockland Immunochemicals, Inc. If you require a commercial license to use this material and do not have one, then return this material, unopened to: Rockland Inc., P.O. BOX 5199, Limerick, Pennsylvania, USA.