

Datasheet for 600-401-BF0**FLASH Antibody****Overview**

| | |
|----------------------|--|
| Description: | Anti-FLASH (RABBIT) Antibody - 600-401-BF0 |
| Item No.: | 600-401-BF0 |
| Size: | 100 µg |
| Applications: | ELISA, IF, IHC, WB |
| Reactivity: | Human |
| Host Species: | Rabbit |

Product Details

| | |
|----------------------|--|
| Background: | A novel mammalian CED-4 homologous was recently identified and cloned in mouse and human and designated FLASH (for FLICE-associated huge protein). FLASH is involved in Fas induced apoptosis. It is recruited to Fas after the receptor cross-linking. Overexpression of wild type of FLASH facilitates and its dominant negative form inhibits Fas induced apoptosis. FLASH interacts with the DEDs of caspase-8 and FADD through the DED-like domain of FLASH and mediates activation of caspase-8. There are parallels between FLASH and Apaf-1/CED-4 although there are arguments against their structural similarity. FLASH is widely expressed. |
| Synonyms: | FLASH Antibody, CED-4, FLASH, RIP25, KIAA1315, CASP8-associated protein 2, FLICE-associated huge protein |
| Host Species: | Rabbit |
| Clonality: | Polyclonal |
| Format: | IgG |

Target Details

| | |
|------------------------|--|
| Gene Name: | CASP8AP2 |
| Reactivity: | Human |
| Immunogen Type: | Conjugated Peptide |
| Immunogen: | Anti-FLASH antibody was prepared from whole rabbit serum produced by repeated immunizations with a synthetic peptide corresponding to amino acids near the C-terminus of human FLASH which differ from those of mouse by one amino acid. |

Purity/Specificity: Anti-FLASH Antibody was affinity purified from monospecific antiserum by immunoaffinity chromatography. Cross reactivity with FLASH from other sources has not been determined.

Relevant Links:

- [UniProtKB - Q9UKL3](#)
- [GeneID - 9994](#)
- [NCBI - AF165161](#)

Application Details

Tested Applications: ELISA, IF, IHC, WB

Application Note: Anti-FLASH Antibody has been tested for use in ELISA, Western Blotting, Immunocytochemistry and Immunofluorescence. Specific conditions for reactivity should be optimized by the end user. Expect a band at approximately 223 kDa in Western Blots of specific cell lysates and tissues.

Assay Dilutions: All assays should be optimized by the user. Recommended dilutions (if any) may be listed below.

ELISA: 1:5,000

IF: 10 µg/mL

WB: 0.5 µg/mL

Formulation

Physical State: Liquid (sterile filtered)

Concentration: 1 mg/mL by UV absorbance at 280 nm

Buffer: 0.01 M Sodium Phosphate, 0.25 M Sodium Chloride, pH 7.2

Preservative: 0.02% (w/v) Sodium Azide

Stabilizer: None

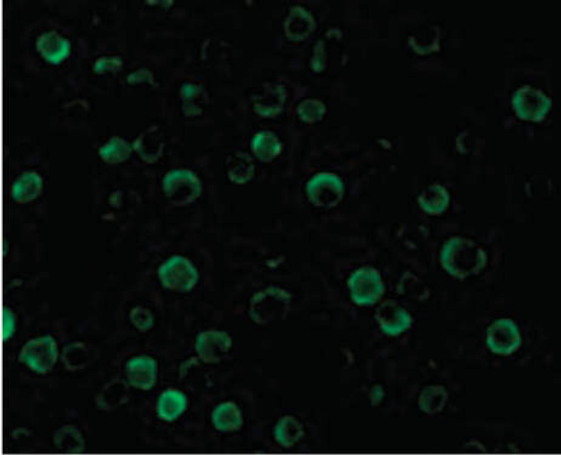
Shipping & Handling

Shipping Condition: Dry Ice

Storage Condition: Store vial at -20° C prior to opening. Aliquot contents and freeze at -20° C or below for extended storage. Avoid cycles of freezing and thawing. Centrifuge product if not completely clear after standing at room temperature. This product is stable for several weeks at 4° C as an undiluted liquid. Dilute only prior to immediate use.

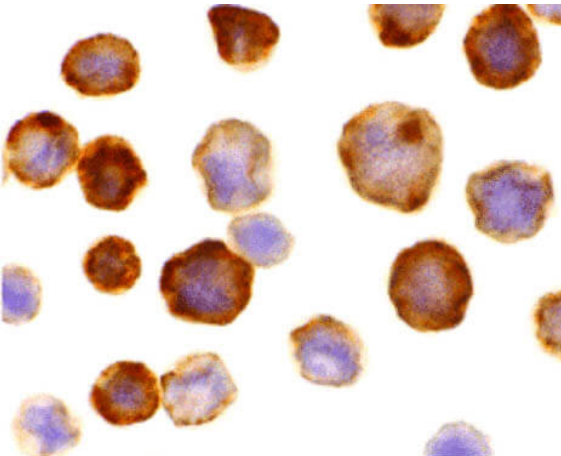
Expiration: Expiration date is one (1) year from date of receipt.

Images



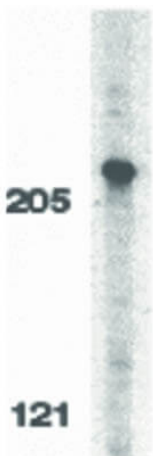
Immunofluorescence Microscopy

Immunofluorescence Microscopy of FLASH antibody.
Tissue: HeLa cells. Fixation: 0.5% PFA. Antigen retrieval: not required. Primary antibody: FLASH antibody at 10 $\mu\text{g}/\text{mL}$ for 1 h at RT. Secondary antibody: Fluorescein rabbit secondary antibody at 1:10,000 for 45 min at RT. Localization: FLASH is nuclear, cytoplasmic, and is also localized in the mitochondria. Staining: FLASH as green fluorescent signal.



Immunocytochemistry

Immunocytochemistry of FLASH antibody. Cells: HeLa cells. Fixation: formalin fixed paraffin embedded. Antigen retrieval: not required. Primary antibody: FLASH antibody at 10 $\mu\text{g}/\text{mL}$ for 1 h at RT. Secondary antibody: Peroxidase rabbit secondary antibody at 1:10,000 for 45 min at RT. Localization: FLASH is nuclear, cytoplasmic, and is also localized in the mitochondria. Staining: FLASH as precipitated brown signal with hematoxylin blue nuclear counterstain.



Western Blot

Western Blot of FLASH antibody. Lane 1: HeLa whole cell lysate. Load: 35 μg per lane. Primary antibody: FLASH antibody at 0.5 $\mu\text{g}/\text{mL}$ for overnight at 4°C. Secondary antibody: Peroxidase rabbit secondary antibody at 1:10,000 for 45 min at RT. Block: 5% BLOTTO overnight at 4°C. Predicted/Observed size: 222.7 kDa, 215 kDa for FLASH. Other band(s): FLASH splice variants and isoforms.

Disclaimer

This product is for research use only and is not intended for therapeutic or diagnostic applications. Please contact a technical service representative for more information. All products of animal origin manufactured by Rockland Immunochemicals are derived from starting materials of North American origin. Collection was performed in United States Department of Agriculture (USDA) inspected facilities and all materials have been inspected and certified to be free of disease and suitable for exportation. All properties listed are typical characteristics and are not specifications. All suggestions and data are offered in good faith but without guarantee as conditions and methods of use of our products are beyond our control. All claims must be made within 30 days following the date of delivery. The prospective user must determine the suitability of our materials before adopting them on a commercial scale. Suggested uses of our products are not recommendations to use our products in violation of any patent or as a license under any patent of Rockland Immunochemicals, Inc. If you require a commercial license to use this material and do not have one, then return this material, unopened to: Rockland Inc., P.O. BOX 5199, Limerick, Pennsylvania, USA.