

**Datasheet for 600-401-BE9****FKBP15 Antibody****Overview**

<b>Description:</b>	Anti-FKBP15 (RABBIT) Antibody - 600-401-BE9
<b>Item No.:</b>	600-401-BE9
<b>Size:</b>	100 µg
<b>Applications:</b>	ELISA, IF, IHC, WB
<b>Reactivity:</b>	Human, Mouse, Rat
<b>Host Species:</b>	Rabbit

**Product Details**

<b>Background:</b>	FKBP15, also known as FKBP133, is a member of the FK506-binding protein family, a group of proteins initially identified as immunophilins, targets for the immunosuppressant drugs FK506 and Rapamycin. FKBP15 is expressed in the developing nervous system and contains a domain similar to Wiskott-Aldrich syndrome protein homology region 1 (WH1) in addition to the FK506-binding protein motif. FKBP15 is distributed along the axonal shafts and partially co-localizes with F-actin in the growth cones of dorsal root ganglion neurons; overexpression of FKBP15 resulted in the number of filopodia in transfected neurons, suggesting that FKBP15 modulates growth cone behavior. FKBP15 has also been shown to associate with both microtubules and the actin filament systems and disruption of its expression by RNAi resulted in delayed transport of early endosomes in HeLa cells indicating that FKBP15 is also involved in the transport of early endosomes. At least three isoforms of FKBP15 are known to exist.
<b>Synonyms:</b>	FKBP15 Antibody, FKBP133, PPP1R76, KIAA0674, FK506-binding protein 15, 133 kDa FK506-binding protein, FKBP-15
<b>Host Species:</b>	Rabbit
<b>Clonality:</b>	Polyclonal
<b>Format:</b>	IgG

**Target Details**

<b>Gene Name:</b>	FKBP15
<b>Reactivity:</b>	Human, Mouse, Rat

<b>Immunogen Type:</b>	Conjugated Peptide
<b>Immunogen:</b>	Anti-FKBP15 antibody was prepared from whole rabbit serum produced by repeated immunizations with a 15 amino acid synthetic peptide from near the N-terminus of human FKBP15.
<b>Purity/Specificity:</b>	Anti-FKBP15 Antibody was affinity purified from monospecific antiserum by immunoaffinity chromatography. Cross reactivity with FKBP15 from other sources has not been determined.
<b>Relevant Links:</b>	<ul style="list-style-type: none"><li>• <a href="#">UniProtKB - Q5T1M5</a></li><li>• <a href="#">GenelD - 23307</a></li><li>• <a href="#">NCBI - NP_056073</a></li></ul>

## Application Details

<b>Tested Applications:</b>	ELISA, IF, IHC, WB
<b>Application Note:</b>	Anti-FKBP15 Antibody has been tested for use in ELISA, Western Blotting, Immunohistochemistry and Immunofluorescence. Specific conditions for reactivity should be optimized by the end user. Expect a band at approximately 134 kDa in Western Blots of specific cell lysates and tissues.
<b>Assay Dilutions:</b>	All assays should be optimized by the user. Recommended dilutions (if any) may be listed below.
<b>ELISA:</b>	1:10,000
<b>IF:</b>	20 µg/mL
<b>IHC:</b>	2.5 µg/mL
<b>WB:</b>	1 µg/mL

## Formulation

<b>Physical State:</b>	Liquid (sterile filtered)
<b>Concentration:</b>	1 mg/mL by UV absorbance at 280 nm
<b>Buffer:</b>	0.01 M Sodium Phosphate, 0.25 M Sodium Chloride, pH 7.2
<b>Preservative:</b>	0.02% (w/v) Sodium Azide
<b>Stabilizer:</b>	None

## Shipping & Handling

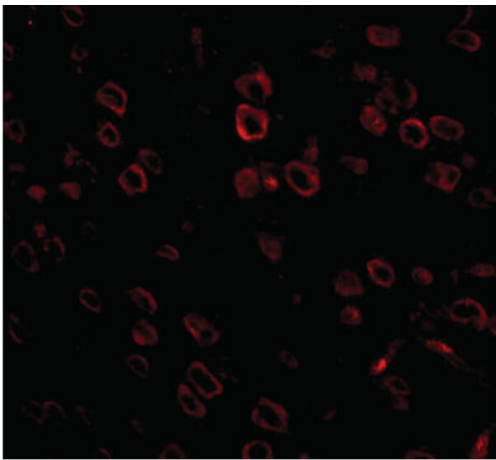
<b>Shipping Condition:</b>	Dry Ice
----------------------------	---------

---

<b>Storage Condition:</b>	Store vial at -20° C prior to opening. Aliquot contents and freeze at -20° C or below for extended storage. Avoid cycles of freezing and thawing. Centrifuge product if not completely clear after standing at room temperature. This product is stable for several weeks at 4° C as an undiluted liquid. Dilute only prior to immediate use.
<b>Expiration:</b>	Expiration date is one (1) year from date of receipt.

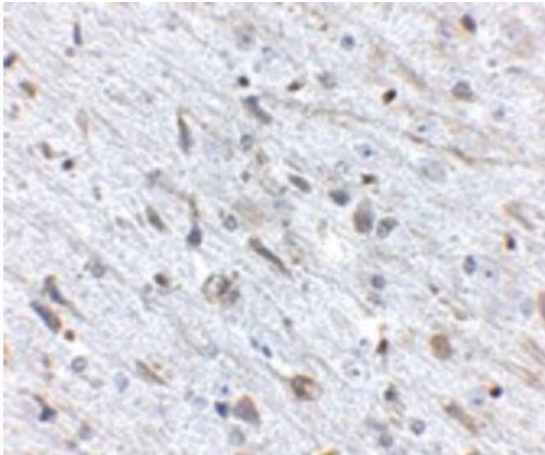
---

## Images



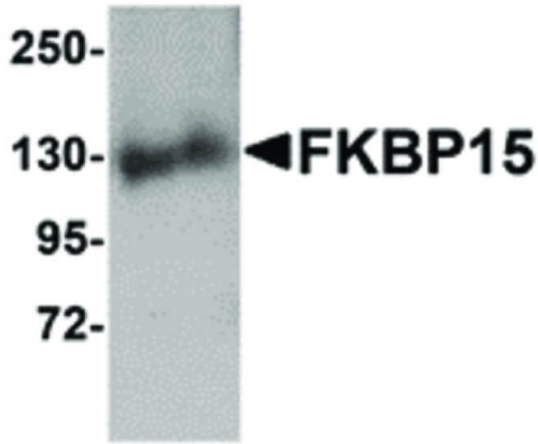
### Immunofluorescence Microscopy

Immunofluorescence Microscopy of FKBP15 antibody.  
Tissue: mouse brain tissue. Fixation: 0.5% PFA. Antigen retrieval: not required. Primary antibody: FKBP15 antibody at 20 µg/mL for 1 h at RT. Secondary antibody: Fluorescein rabbit secondary antibody at 1:10,000 for 45 min at RT. Localization: FKBP15 is cytoplasmic. Staining: FKBP15 as red fluorescent signal.



### Immunohistochemistry

Immunohistochemistry of FKBP15 antibody. Tissue: Mouse brain tissue. Fixation: formalin fixed paraffin embedded. Antigen retrieval: not required. Primary antibody: FKBP15 antibody at 2.5 µg/mL for 1 h at RT. Secondary antibody: Peroxidase rabbit secondary antibody at 1:10,000 for 45 min at RT. Localization: FKBP15 is cytoplasmic. Staining: FKBP15 as precipitated brown signal with purple nuclear counterstain.

**Western Blot**

Western Blot of FKBP15 antibody. Lane 1: 3T3 cell lysate with FKBP15 antibody at 1  $\mu\text{g}/\text{mL}$ . Load: 35  $\mu\text{g}$  per lane.

Secondary antibody: Peroxidase rabbit secondary antibody at 1:10,000 for 45 min at RT. Block: 5% BLOTTO overnight at 4°C. Predicted/Observed size: 134 kDa, 130 kDa for FKBP15.

Other band(s): FKBP15 splice variants and isoforms.

**Disclaimer**

This product is for research use only and is not intended for therapeutic or diagnostic applications. Please contact a technical service representative for more information. All products of animal origin manufactured by Rockland Immunochemicals are derived from starting materials of North American origin. Collection was performed in United States Department of Agriculture (USDA) inspected facilities and all materials have been inspected and certified to be free of disease and suitable for exportation. All properties listed are typical characteristics and are not specifications. All suggestions and data are offered in good faith but without guarantee as conditions and methods of use of our products are beyond our control. All claims must be made within 30 days following the date of delivery. The prospective user must determine the suitability of our materials before adopting them on a commercial scale. Suggested uses of our products are not recommendations to use our products in violation of any patent or as a license under any patent of Rockland Immunochemicals, Inc. If you require a commercial license to use this material and do not have one, then return this material, unopened to: Rockland Inc., P.O. BOX 5199, Limerick, Pennsylvania, USA.