

Datasheet for 600-401-BE7**Fibulin 3 Antibody****Overview**

Description:	Anti-Fibulin 3 (RABBIT) Antibody - 600-401-BE7
Item No.:	600-401-BE7
Size:	100 µg
Applications:	ELISA, IF, IHC, WB
Reactivity:	Human, Mouse, Rat
Host Species:	Rabbit

Product Details

Background:	Fibulin 3, also known as epidermal growth factor (EGF)-containing fibulin-like extracellular matrix protein 1 (EFEMP1), is a member of the fibulin family of extracellular glycoproteins, a group of proteins that are widely distributed and frequently associated with vascular and elastic tissues. The fibulin proteins typically contain a tandem array of EGF-like repeats and a fibulin-type COOH-terminal module. Aberrant accumulation of Fibulin 3 in the endoplasmic reticulum of retinal pigment epithelial cells has been shown to be associated with inherited forms of macular degeneration, but the loss of Fibulin 3 expression does not lead to macular degeneration but rather the appearance of hernias due to a reduction of elastic fibers of fascial connective tissue. Recent experiments have shown that expression of Fibulin 3 promotes tumor growth and may thus be a therapeutic target. At least three isoforms of Fibulin 3 are known to exist. This antibody is predicted to not cross-react with other Fibulin proteins.
Synonyms:	Fibulin 3 Antibody, DHRD, DRAD, FBNL, MLVT, MTLV, S1-5, FBLN3, FIBL-3, EGF-containing fibulin-like extracellular matrix protein 1, Extracellular protein S1-5
Host Species:	Rabbit
Clonality:	Polyclonal
Format:	IgG

Target Details

Gene Name:	EFEMP1
Reactivity:	Human, Mouse, Rat

Immunogen Type:	Conjugated Peptide
Immunogen:	Anti-Fibulin 3 antibody was prepared from whole rabbit serum produced by repeated immunizations with a 19 amino acid synthetic peptide near the C-terminus of human Fibulin 3.
Purity/Specificity:	Anti-Fibulin 3 Antibody was affinity purified from monospecific antiserum by immunoaffinity chromatography. Cross reactivity with Fibulin 3 from other sources has not been determined.
Relevant Links:	<ul style="list-style-type: none">• UniProtKB - Q12805• GenelD - 2202• NCBI - NP_004096

Application Details

Tested Applications:	ELISA, IF, IHC, WB
Application Note:	Anti-Fibulin 3 Antibody has been tested for use in ELISA, Western Blotting, Immunocytochemistry and Immunofluorescence. Specific conditions for reactivity should be optimized by the end user. Expect a band at approximately 55 kDa in Western Blots of specific cell lysates and tissues.
Assay Dilutions:	All assays should be optimized by the user. Recommended dilutions (if any) may be listed below.
ELISA:	1:5000-1:10000
IF:	20 µg/mL
WB:	0.5 - 1 µg/mL

Formulation

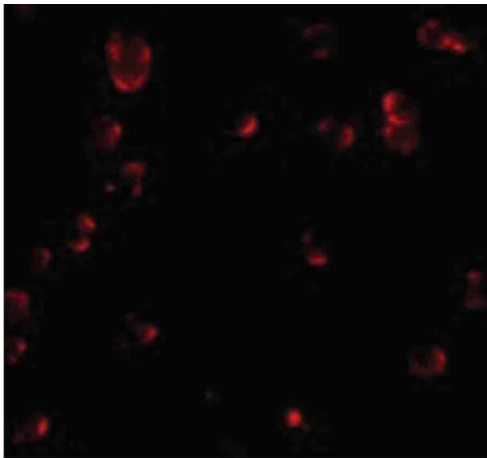
Physical State:	Liquid (sterile filtered)
Concentration:	1.0 mg/ml by UV absorbance at 280 nm
Buffer:	0.01 M Sodium Phosphate, 0.25 M Sodium Chloride, pH 7.2
Preservative:	0.02% (w/v) Sodium Azide
Stabilizer:	None

Shipping & Handling

Shipping Condition:	Dry Ice
----------------------------	---------

Storage Condition:	Store vial at -20° C prior to opening. Aliquot contents and freeze at -20° C or below for extended storage. Avoid cycles of freezing and thawing. Centrifuge product if not completely clear after standing at room temperature. This product is stable for several weeks at 4° C as an undiluted liquid. Dilute only prior to immediate use.
Expiration:	Expiration date is one (1) year from date of receipt.

Images



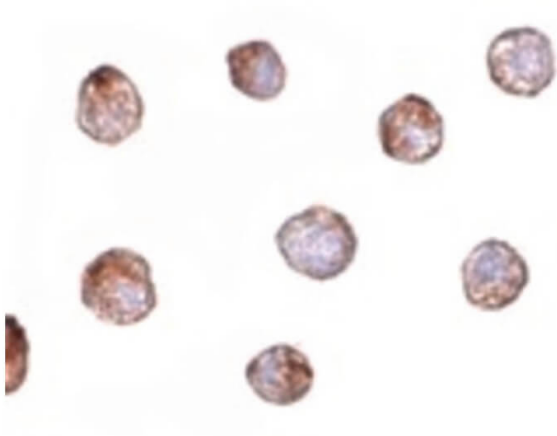
Immunofluorescence Microscopy

Immunofluorescence Microscopy of Fibulin 3 antibody.

Tissue: HeLa cells. Fixation: 0.5% PFA. Antigen retrieval:

not required. Primary antibody: Fibulin 3 antibody at 20 µg/mL for 1 h at RT. Secondary antibody: Fluorescein rabbit secondary antibody at 1:10,000 for 45 min at RT.

Localization: Fibulin 3 is secreted into the extracellular space. Staining: Fibulin 3 as red fluorescent signal.



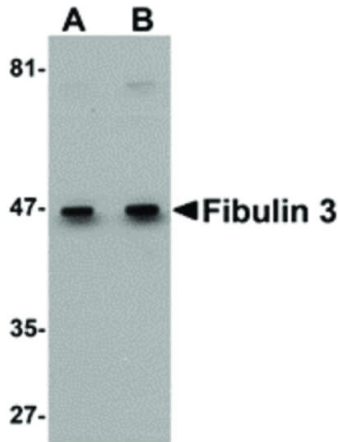
Immunohistochemistry

Immunocytochemistry of Fibulin 3 antibody. Tissue: HeLa

cells. Fixation: formalin fixed paraffin embedded. Antigen

retrieval: not required. Primary antibody: Fibulin 3 antibody at 20 µg/mL for 1 h at RT. Secondary antibody: Peroxidase rabbit secondary antibody at 1:10,000 for 45 min at RT.

Localization: Fibulin 3 is secreted into the extracellular space. Staining: Fibulin 3 as precipitated blue signal with brown nuclear counterstain.



Western Blot

Western Blot of Fibulin 3 antibody. Lane 1: HeLa cell lysate with Fibulin 3 antibody at 0.5 µg/mL. Lane 2: HeLa cell lysate with Fibulin 3 antibody at 1 µg/mL. Load: 35 µg per lane. Secondary antibody: Peroxidase rabbit secondary antibody at 1:10,000 for 45 min at RT. Block: 5% BLOTTO overnight at 4°C. Predicted/Observed size: 55 kDa, 47 kDa for Fibulin 3. Other band(s): Fibulin 3 splice variants and isoforms.

Disclaimer

This product is for research use only and is not intended for therapeutic or diagnostic applications. Please contact a technical service representative for more information. All products of animal origin manufactured by Rockland Immunochemicals are derived from starting materials of North American origin. Collection was performed in United States Department of Agriculture (USDA) inspected facilities and all materials have been inspected and certified to be free of disease and suitable for exportation. All properties listed are typical characteristics and are not specifications. All suggestions and data are offered in good faith but without guarantee as conditions and methods of use of our products are beyond our control. All claims must be made within 30 days following the date of delivery. The prospective user must determine the suitability of our materials before adopting them on a commercial scale. Suggested uses of our products are not recommendations to use our products in violation of any patent or as a license under any patent of Rockland Immunochemicals, Inc. If you require a commercial license to use this material and do not have one, then return this material, unopened to: Rockland Inc., P.O. BOX 5199, Limerick, Pennsylvania, USA.