

Datasheet for 600-401-BE6**FHIT Antibody****Overview**

Description:	Anti-FHIT (RABBIT) Antibody - 600-401-BE6
Item No.:	600-401-BE6
Size:	100 µg
Applications:	ELISA, IF, WB
Reactivity:	Human, Mouse
Host Species:	Rabbit

Product Details

Background:	FHIT is member of the histidine triad gene family and is a diadenosine involved in purine metabolism (1). FHIT is also thought to be a tumor suppressor gene and is involved in multiple apoptotic pathways (1,2). The FHIT gene encompasses the common fragile site FRA3B on chromosome 3, where carcinogen-induced damage can lead to translocations and aberrant transcripts of this gene (3). Aberrant transcripts from this gene have been found in multiple carcinomas (4).
Synonyms:	FHIT Antibody , FRA3B, AP3AaseAP3A hydrolase, AP3Aase
Host Species:	Rabbit
Clonality:	Polyclonal
Format:	IgG

Target Details

Gene Name:	FHIT
Reactivity:	Human, Mouse
Immunogen Type:	Conjugated Peptide
Immunogen:	Anti-FHIT antibody was prepared from whole rabbit serum produced by repeated immunizations with an 18 amino acid peptide near the C-terminus of human FHIT.
Purity/Specificity:	Anti-FHIT Antibody was affinity purified from monospecific antiserum by immunoaffinity chromatography. FHIT antibody is human and mouse reactive.

Relevant Links:	<ul style="list-style-type: none">• UniProtKB - P49789• GeneID - 2272• NCBI - NP_002003
------------------------	---

Application Details

Tested Applications:	ELISA, IF, WB
Application Note:	Anti-FHIT Antibody has been tested for use in ELISA, Western Blotting and Immunofluorescence. Specific conditions for reactivity should be optimized by the end user. Expect a band at approximately 17 kDa in Western Blots of specific cell lysates and tissues.
Assay Dilutions:	All assays should be optimized by the user. Recommended dilutions (if any) may be listed below.
ELISA:	User Optimized
IF:	User Optimized
WB:	User Optimized

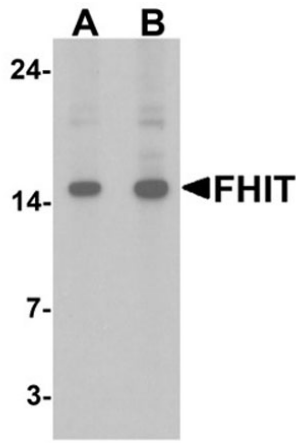
Formulation

Physical State:	Liquid (sterile filtered)
Concentration:	1 mg/mL by UV absorbance at 280 nm
Buffer:	0.01 M Sodium Phosphate, 0.25 M Sodium Chloride, pH 7.2
Preservative:	0.02% (w/v) Sodium Azide
Stabilizer:	None

Shipping & Handling

Shipping Condition:	Dry Ice
Storage Condition:	Store vial at -20° C prior to opening. Aliquot contents and freeze at -20° C or below for extended storage. Avoid cycles of freezing and thawing. Centrifuge product if not completely clear after standing at room temperature. This product is stable for several weeks at 4° C as an undiluted liquid. Dilute only prior to immediate use.
Expiration:	Expiration date is one (1) year from date of receipt.

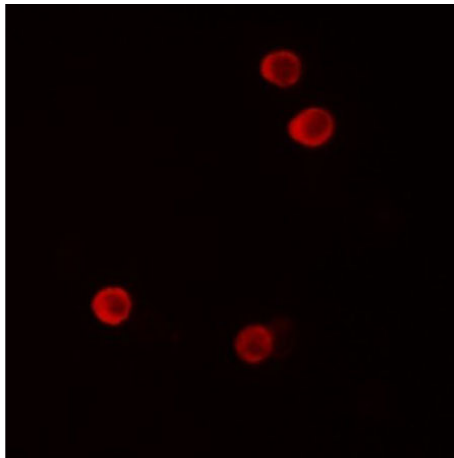
Images

**Western Blot**

Western blot of FHIT.

Load: HeLa cell lysate.

Primary Antibody: FHIT antibody at (A) 1 and (B) 2 $\mu\text{g/ml}$.

**Immunofluorescence Microscopy**

Immunofluorescence of FHIT.

Tissue: HeLa cells.

Primary Antibody: FHIT antibody at 5 $\mu\text{g/mL}$.

Disclaimer

This product is for research use only and is not intended for therapeutic or diagnostic applications. Please contact a technical service representative for more information. All products of animal origin manufactured by Rockland Immunochemicals are derived from starting materials of North American origin. Collection was performed in United States Department of Agriculture (USDA) inspected facilities and all materials have been inspected and certified to be free of disease and suitable for exportation. All properties listed are typical characteristics and are not specifications. All suggestions and data are offered in good faith but without guarantee as conditions and methods of use of our products are beyond our control. All claims must be made within 30 days following the date of delivery. The prospective user must determine the suitability of our materials before adopting them on a commercial scale. Suggested uses of our products are not recommendations to use our products in violation of any patent or as a license under any patent of Rockland Immunochemicals, Inc. If you require a commercial license to use this material and do not have one, then return this material, unopened to: Rockland Inc., P.O. BOX 5199, Limerick, Pennsylvania, USA.