

Datasheet for 600-401-BE1**FEZ1 Antibody****Overview**

Description:	Anti-FEZ1 (RABBIT) Antibody - 600-401-BE1
Item No.:	600-401-BE1
Size:	100 µg
Applications:	ELISA, WB
Reactivity:	Human, Mouse, Rat
Host Species:	Rabbit

Product Details

Background:	Similar to its <i>C. elegans</i> homolog UNC-76, mammalian FEZ1, an abundant membrane protein and protein kinase C (PKC)-Z substrate, is involved in axonal guidance. Following phosphorylation by PKC-Z, FEZ1 translocates from the plasma membrane to the cytoplasm. FEZ1 is then able to interact with a number of proteins involved in axonal outgrowth and cellular transport such as DISC1, a candidate gene for schizophrenia, as well as kinesin-1, a microtubule-based motor protein. FEZ1 also interacts with proteins involved in transcriptional regulation and chromatin remodeling, suggesting that FEZ1 may have nuclear regulatory functions in addition to those for neuronal development. At least two distinct isoforms of FEZ1 are known to exist.
Synonyms:	FEZ1 Antibody, Fasciculation and elongation protein zeta-1, Zygin I
Host Species:	Rabbit
Clonality:	Polyclonal
Format:	IgG

Target Details

Gene Name:	FEZ1
Reactivity:	Human, Mouse, Rat
Immunogen Type:	Conjugated Peptide
Immunogen:	Anti-FEZ1 antibody was prepared from whole rabbit serum produced by repeated immunizations with a 19 amino acid synthetic peptide from near the C-terminus of human FEZ1.

Purity/Specificity: Anti-FEZ1 Antibody was affinity purified from monospecific antiserum by immunoaffinity chromatography. Cross reactivity with FEZ1 from other sources has not been determined.

Relevant Links:

- [UniProtKB - Q99689](#)
- [GeneID - 9638](#)
- [NCBI - NP_005094.1](#)

Application Details

Tested Applications: ELISA, WB

Application Note: Anti-FEZ1 Antibody has been tested for use in ELISA and Western Blotting. Specific conditions for reactivity should be optimized by the end user. Expect a band at approximately 46 kDa in Western Blots of specific cell lysates and tissues.

Assay Dilutions: All assays should be optimized by the user. Recommended dilutions (if any) may be listed below.

ELISA: 1:128,000 limit

WB: 0.01-0.03 µg/mL

Formulation

Physical State: Liquid (sterile filtered)

Concentration: 1 mg/mL by UV absorbance at 280 nm

Buffer: 0.01 M Sodium Phosphate, 0.25 M Sodium Chloride, pH 7.2

Preservative: 0.02% (w/v) Sodium Azide

Stabilizer: None

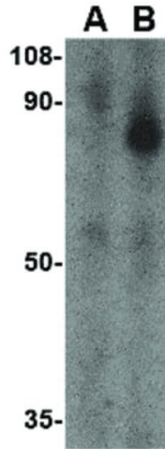
Shipping & Handling

Shipping Condition: Dry Ice

Storage Condition: Store vial at -20° C prior to opening. Aliquot contents and freeze at -20° C or below for extended storage. Avoid cycles of freezing and thawing. Centrifuge product if not completely clear after standing at room temperature. This product is stable for several weeks at 4° C as an undiluted liquid. Dilute only prior to immediate use.

Expiration: Expiration date is one (1) year from date of receipt.

Images



Western Blot

Western Blot of FEZ1 antibody. Lane A: SK-N-SH cekk lysate in the presence of blocking peptide. Lane B: SK-N-SH cekk lysate in the absence of blocking peptide. Load: 35 μ g per lane. Primary antibody: Anti-FEZ1 antibody at 1 μ g/mL. Secondary antibody: Peroxidase rabbit secondary antibody at 1:10,000 for 45 min at RT. Block: 5% BLOTTO overnight at 4°C. Predicted/Observed size: 45.1 kDa, ~85 kDa for FEZ1.

Disclaimer

This product is for research use only and is not intended for therapeutic or diagnostic applications. Please contact a technical service representative for more information. All products of animal origin manufactured by Rockland Immunochemicals are derived from starting materials of North American origin. Collection was performed in United States Department of Agriculture (USDA) inspected facilities and all materials have been inspected and certified to be free of disease and suitable for exportation. All properties listed are typical characteristics and are not specifications. All suggestions and data are offered in good faith but without guarantee as conditions and methods of use of our products are beyond our control. All claims must be made within 30 days following the date of delivery. The prospective user must determine the suitability of our materials before adopting them on a commercial scale. Suggested uses of our products are not recommendations to use our products in violation of any patent or as a license under any patent of Rockland Immunochemicals, Inc. If you require a commercial license to use this material and do not have one, then return this material, unopened to: Rockland Inc., P.O. BOX 5199, Limerick, Pennsylvania, USA.