

## Datasheet for 600-401-BD3 FAM193B Antibody

### Overview

<b>Description:</b>	Anti-FAM193B (RABBIT) Antibody - 600-401-BD3
<b>Item No.:</b>	600-401-BD3
<b>Size:</b>	100 µg
<b>Applications:</b>	ELISA, IF, WB
<b>Reactivity:</b>	Human
<b>Host Species:</b>	Rabbit

### Product Details

<b>Background:</b>	FAM193B, also known as IRIZIO, was initially identified as a protein that is upregulated in alveolar rhabdomyosarcoma (ARMS), a type of fast-growing tumor characterized by chromosomal translocations fusing the PAX3 or PAX7 gene with that of FOXO1. It has been suggested that, in addition to the PAX3-FOXO1 gene fusion, disruption of the Rb and p53 pathways is required for full ARMS tumorigenesis. In PAX3-FOXO1-expressing primary mouse fibroblasts that possessed a defective p53 pathway, FAM193B expression enabled the tumorigenic transformation, suggesting that FAM193B may contribute to rhabdomyosarcomagenesis in humans.
<b>Synonyms:</b>	FAM193B Antibody, IRIZIO, KIAA1931, Protein FAM193B
<b>Host Species:</b>	Rabbit
<b>Clonality:</b>	Polyclonal
<b>Format:</b>	IgG

### Target Details

<b>Gene Name:</b>	FAM193B
<b>Reactivity:</b>	Human
<b>Immunogen Type:</b>	Conjugated Peptide
<b>Immunogen:</b>	Anti-FAM193B antibody was prepared from whole rabbit serum produced by repeated immunizations with a 16 amino acid synthetic peptide near the N-terminus of human FAM193B.

**Purity/Specificity:** Anti-FAM193B Antibody was affinity purified from monospecific antiserum by immunoaffinity chromatography. At least two isoforms of FAM193B are known to exist; this antibody will detect both isoforms.

**Relevant Links:**

- [UniProtKB - Q96PV7](#)
- [GeneID - 54540](#)
- [NCBI - XP\\_006714938.1](#)

## Application Details

**Tested Applications:** ELISA, IF, WB

**Application Note:** Anti-FAM193B Antibody has been tested for use in ELISA, Western Blotting and Immunofluorescence. Specific conditions for reactivity should be optimized by the end user. Expect a band at approximately 97 kDa in Western Blots of specific cell lysates and tissues.

**Assay Dilutions:** All assays should be optimized by the user. Recommended dilutions (if any) may be listed below.

**ELISA:** 1:10,000

**IF:** 20 µg/mL

**WB:** 1 µg/mL

## Formulation

**Physical State:** Liquid (sterile filtered)

**Concentration:** 1 mg/mL by UV absorbance at 280 nm

**Buffer:** 0.01 M Sodium Phosphate, 0.25 M Sodium Chloride, pH 7.2

**Preservative:** 0.02% (w/v) Sodium Azide

**Stabilizer:** None

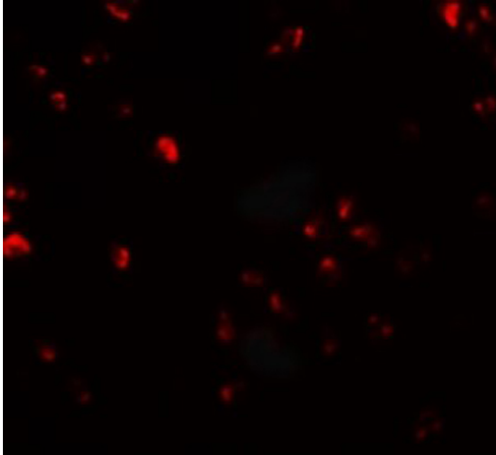
## Shipping & Handling

**Shipping Condition:** Dry Ice

**Storage Condition:** Store vial at -20° C prior to opening. Aliquot contents and freeze at -20° C or below for extended storage. Avoid cycles of freezing and thawing. Centrifuge product if not completely clear after standing at room temperature. This product is stable for several weeks at 4° C as an undiluted liquid. Dilute only prior to immediate use.

**Expiration:** Expiration date is one (1) year from date of receipt.

## Images

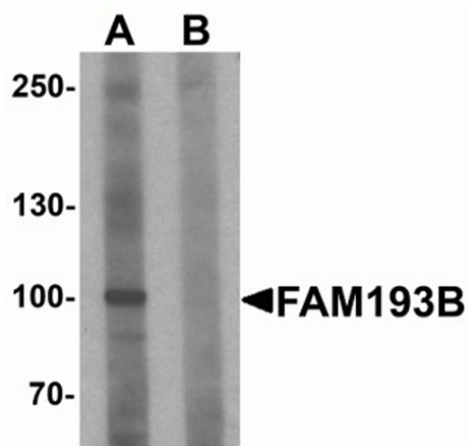


### Immunofluorescence Microscopy

Immunofluorescence of FAM193B.

Cell: Jurkat cells.

Primary Antibody: FAM193B antibody at 20 µg/mL.



### Western Blot

Western blot analysis of FAM193B.

Load: Jurkat cell lysate.

Primary Antibody: FAM193B antibody at 1 µg/mL in (A) the absence and (B) the presence of blocking peptide.

## Disclaimer

This product is for research use only and is not intended for therapeutic or diagnostic applications. Please contact a technical service representative for more information. All products of animal origin manufactured by Rockland Immunochemicals are derived from starting materials of North American origin. Collection was performed in United States Department of Agriculture (USDA) inspected facilities and all materials have been inspected and certified to be free of disease and suitable for exportation. All properties listed are typical characteristics and are not specifications. All suggestions and data are offered in good faith but without guarantee as conditions and methods of use of our products are beyond our control. All claims must be made within 30 days following the date of delivery. The prospective user must determine the suitability of our materials before adopting them on a commercial scale. Suggested uses of our products are not recommendations to use our products in violation of any patent or as a license under any patent of Rockland Immunochemicals, Inc. If you require a commercial license to use this material and do not have one, then return this material, unopened to: Rockland Inc., P.O. BOX 5199, Limerick, Pennsylvania, USA.