

Datasheet for 600-401-BD1**FAIM2 Antibody****Overview**

Description:	Anti-FAIM2 (RABBIT) Antibody - 600-401-BD1
Item No.:	600-401-BD1
Size:	100 µg
Applications:	ELISA, IHC, WB
Reactivity:	Human, Mouse, Rat
Host Species:	Rabbit

Product Details

Background:	Programmed cell death regulates a number of biological processes such as normal organism development, tissue homeostasis, and removal of damaged cells. Disruption of this process has been implicated in a variety of diseases such as cancer. FAIM2 is a recently identified protein that can inhibit the apoptotic signal transduced by the Fas receptor but not from the related tumor necrosis factor-alpha death signal. In this respect, FAIM2 is functionally similar to the anti-apoptotic proteins FAIM, FLIP and Bcl-xL. FAIM2, a seven membrane spanning protein, can bind the Fas receptor but does not regulate Fas expression or inhibit binding of FADD to Fas. FAIM2 is widely distributed, but highly expressed in the hippocampus and other neural tissues. FAIM2 was also identified as the neural membrane protein 35 (NMP35) and its expression is known to be regulated by the Phosphatidylinositol 3-kinase-Akt/PKB pathway.
Synonyms:	FAIM2 Antibody, LFG, LFG2, NGP35, NMP35, TMBIM2, KIAA0950, LFG, Protein lifeguard 2, Fas apoptotic inhibitory molecule 2
Host Species:	Rabbit
Clonality:	Polyclonal
Format:	IgG

Target Details

Gene Name:	FAIM2
Reactivity:	Human, Mouse, Rat
Immunogen Type:	Conjugated Peptide

Immunogen:	Anti-FAIM2 antibody was prepared from whole rabbit serum produced by repeated immunizations with a 16 amino acid synthetic peptide from near the N-terminus of human FAIM2.
Purity/Specificity:	Anti-FAIM2 Antibody was affinity purified from monospecific antiserum by immunoaffinity chromatography. Cross reactivity with FAIM2 from other sources has not been determined.
Relevant Links:	<ul style="list-style-type: none">• UniProtKB - Q9BWQ8• GeneID - 23017• NCBI - AAF06327

Application Details

Tested Applications:	ELISA, IHC, WB
Application Note:	Anti-FAIM2 Antibody has been tested for use in ELISA, Western Blotting, and Immunohistochemistry. Specific conditions for reactivity should be optimized by the end user. Expect a band at approximately 35 kDa in Western Blots of specific cell lysates and tissues.
Assay Dilutions:	All assays should be optimized by the user. Recommended dilutions (if any) may be listed below.
ELISA:	1:50,000
IHC:	5 µg/mL
WB:	5 µg/mL

Formulation

Physical State:	Liquid (sterile filtered)
Concentration:	1 mg/mL by UV absorbance at 280 nm
Buffer:	0.01 M Sodium Phosphate, 0.25 M Sodium Chloride, pH 7.2
Preservative:	0.02% (w/v) Sodium Azide
Stabilizer:	None

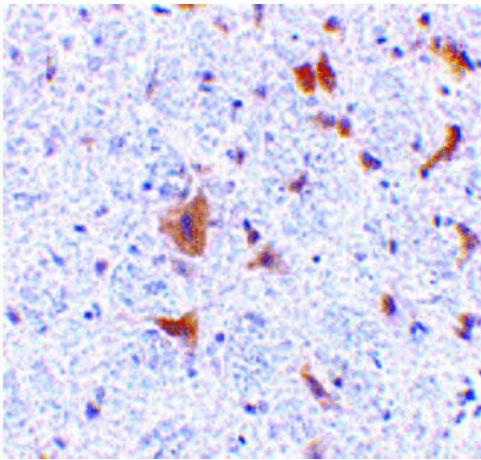
Shipping & Handling

Shipping Condition:	Dry Ice
----------------------------	---------

Storage Condition: Store vial at -20° C prior to opening. Aliquot contents and freeze at -20° C or below for extended storage. Avoid cycles of freezing and thawing. Centrifuge product if not completely clear after standing at room temperature. This product is stable for several weeks at 4° C as an undiluted liquid. Dilute only prior to immediate use.

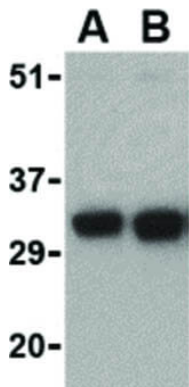
Expiration: Expiration date is one (1) year from date of receipt.

Images



Immunohistochemistry

Immunohistochemistry of FAIM2 antibody. Tissue: Mouse brain tissue. Fixation: formalin fixed paraffin embedded. Antigen retrieval: not required. Primary antibody: FAIM2 antibody at 5 µg/mL for 1 h at RT. Secondary antibody: Peroxidase rabbit secondary antibody at 1:10,000 for 45 min at RT. Localization: FAIM2 is localized in the cell membrane and cell junction. Staining: FAIM2 as precipitated brown signal with hematoxylin purple nuclear counterstain.



Western Blot

Western Blot of FAIM2 antibody. Lane 1: EL4 cell lysate with FAIM2 at 0.5 µg/mL. Lane 2: EL4 cell lysate with FAIM2 at 1 µg/mL. Load: 35 µg per lane. Secondary antibody: Peroxidase rabbit secondary antibody at 1:10,000 for 45 min at RT. Block: 5% BLOTTO overnight at 4°C. Predicted/Observed size: 35.3 kDa, 33 kDa for FAIM2.

Disclaimer

This product is for research use only and is not intended for therapeutic or diagnostic applications. Please contact a technical service representative for more information. All products of animal origin manufactured by Rockland Immunochemicals are derived from starting materials of North American origin. Collection was performed in United States Department of Agriculture (USDA) inspected facilities and all materials have been inspected and certified to be free of disease and suitable for exportation. All properties listed are typical characteristics and are not specifications. All suggestions and data are offered in good faith but without guarantee as conditions and methods of use of our products are beyond our control. All claims must be made within 30 days following the date of delivery. The prospective user must determine the suitability of our materials before adopting them on a commercial scale. Suggested uses of our products are not recommendations to use our products in violation of any patent or as a license under any patent of Rockland Immunochemicals, Inc. If you require a commercial license to use this material and do not have one, then return this material, unopened to: Rockland Inc., P.O. BOX 5199, Limerick, Pennsylvania, USA.