

Datasheet for 600-401-BC7**F1A alpha Antibody****Overview**

Description:	Anti-F1A alpha (RABBIT) Antibody - 600-401-BC7
Item No.:	600-401-BC7
Size:	100 µg
Applications:	ELISA, IF, IHC, WB
Reactivity:	Human, Mouse, Rat
Host Species:	Rabbit

Product Details

Background:	Fas and tumor necrosis factor receptor 1 (TNFR1) are two prototype members in the death receptor family. A novel protein that associates with the intracellular domains of Fas and TNFR1 was recently identified and designated F1Aalpha and FEM1b. F1Aalpha/FEM1b is the homologue of <i>C. elegans</i> sex determining protein FEM-1. FEM-1/F1Aalpha is cleaved by CED-3 and caspase. FEM-1/F1Aalpha associates with CED-4 and its mammalian homologue Apaf-1. Overexpression of F1Aalpha induces apoptosis. F1Aalpha is therefore a novel member of the death receptor associated protein that mediates apoptosis. F1Aalpha is expressed in a variety of human and mouse tissues.
Synonyms:	F1A alpha Antibody, F1AA, F1A-ALPHA, FEM1-beta, F1AA, KIAA0396, Protein fem-1 homolog B, FEM1b
Host Species:	Rabbit
Clonality:	Polyclonal
Format:	IgG

Target Details

Gene Name:	FEM1B
Reactivity:	Human, Mouse, Rat
Immunogen Type:	Conjugated Peptide
Immunogen:	Anti-F1A antibody was prepared from whole rabbit serum produced by repeated immunizations with a 14 amino acid peptide near the C-terminus of human F1A.

Purity/Specificity: Anti-F1A alpha Antibody was affinity purified from monospecific antiserum by immunoaffinity chromatography. Cross reactivity with F1A alpha from other sources has not been determined.

Relevant Links:

- [UniProtKB - Q9UK73](#)
- [GeneID - 10116](#)
- [NCBI - AAF05314](#)

Application Details

Tested Applications: ELISA, IF, IHC, WB

Application Note: Anti-F1A alpha Antibody has been tested for use in ELISA, Western Blotting, Immunohistochemistry and Immunofluorescence. Specific conditions for reactivity should be optimized by the end user. Expect a band at approximately 70 kDa in Western Blots of specific cell lysates and tissues.

Assay Dilutions: All assays should be optimized by the user. Recommended dilutions (if any) may be listed below.

ELISA: 1:10,000

IF: 20 µg/mL

IHC: 5 µg/mL

WB: 1 µg/mL

Formulation

Physical State: Liquid (sterile filtered)

Concentration: 1 mg/mL by UV absorbance at 280 nm

Buffer: 0.01 M Sodium Phosphate, 0.25 M Sodium Chloride, pH 7.2

Preservative: 0.02% (w/v) Sodium Azide

Stabilizer: None

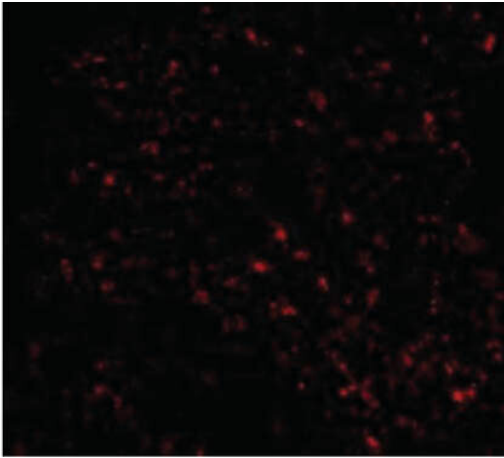
Shipping & Handling

Shipping Condition: Dry Ice

Storage Condition: Store vial at -20° C prior to opening. Aliquot contents and freeze at -20° C or below for extended storage. Avoid cycles of freezing and thawing. Centrifuge product if not completely clear after standing at room temperature. This product is stable for several weeks at 4° C as an undiluted liquid. Dilute only prior to immediate use.

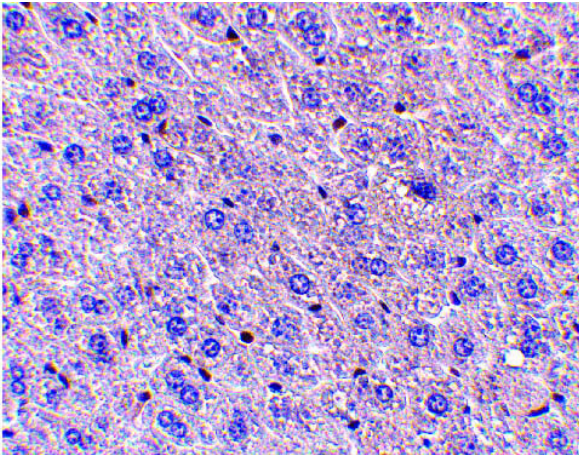
Expiration: Expiration date is one (1) year from date of receipt.

Images



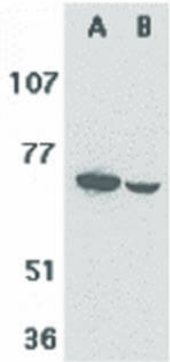
Immunofluorescence Microscopy

Immunofluorescence Microscopy of F1A alpha antibody. Tissue: Mouse liver cells. Fixation: 0.5% PFA. Antigen retrieval: not required. Primary antibody: F1A alpha antibody at 20 $\mu\text{g}/\text{mL}$ for 1 h at RT. Secondary antibody: Fluorescein rabbit secondary antibody at 1:10,000 for 45 min at RT. Localization: F1A alpha is nuclear and cytoplasmic. Staining: F1A alpha as red fluorescent signal.



Immunohistochemistry

Immunohistochemistry of F1A alpha antibody. Tissue: Mouse liver tissue. Fixation: formalin fixed paraffin embedded. Antigen retrieval: not required. Primary antibody: F1A alpha antibody at 5 $\mu\text{g}/\text{mL}$ for 1 h at RT. Secondary antibody: Peroxidase rabbit secondary antibody at 1:10,000 for 45 min at RT. Localization: F1A alpha is nuclear and cytoplasmic. Staining: F1A alpha as precipitated pink signal with hematoxylin purple nuclear counterstain.

**Western Blot**

Western Blot of F1A alpha antibody. Lane 1: Mouse liver tissue lysate. Lane 2: Rat liver tissue lysate. Load: 35 μ g per lane. Primary antibody: F1A alpha antibody at 1 μ g/mL for overnight at 4°C. Secondary antibody: Peroxidase rabbit secondary antibody at 1:10,000 for 45 min at RT. Block: 5% BLOTTO overnight at 4°C. Predicted/Observed size: 70.3 kDa, 70 kDa for F1A alpha.

Disclaimer

This product is for research use only and is not intended for therapeutic or diagnostic applications. Please contact a technical service representative for more information. All products of animal origin manufactured by Rockland Immunochemicals are derived from starting materials of North American origin. Collection was performed in United States Department of Agriculture (USDA) inspected facilities and all materials have been inspected and certified to be free of disease and suitable for exportation. All properties listed are typical characteristics and are not specifications. All suggestions and data are offered in good faith but without guarantee as conditions and methods of use of our products are beyond our control. All claims must be made within 30 days following the date of delivery. The prospective user must determine the suitability of our materials before adopting them on a commercial scale. Suggested uses of our products are not recommendations to use our products in violation of any patent or as a license under any patent of Rockland Immunochemicals, Inc. If you require a commercial license to use this material and do not have one, then return this material, unopened to: Rockland Inc., P.O. BOX 5199, Limerick, Pennsylvania, USA.