

Datasheet for 600-401-BC1**ESX1 Antibody****Overview**

Description:	Anti-ESX1 (RABBIT) Antibody - 600-401-BC1
Item No.:	600-401-BC1
Size:	100 µg
Applications:	ELISA, IF, IHC, WB
Reactivity:	Human
Host Species:	Rabbit

Product Details

Background:	Homeobox proteins are transcription factors that contain a helix-turn-helix DNA binding domain termed the homeodomain. ESX1 is an X-linked homeobox gene primarily expressed in the placenta and testis and contains two functional domains: the homeodomain and the proline-rich domain. During embryogenesis, ESX1 is expressed in the extraembryonic tissues, including the endoderm of the visceral yolk sac, the ectoderm of the chorion and the labyrinthine trophoblast of the chorioallantoic placenta. ESX1 can act like a transcriptional repressor to the human oncogene K-ras and treatment of human cancer cells with an ESX1 protein fragment containing the homeodomain reduces the tumorigenicity of cells containing oncogenic K-ras mutations, suggesting ESX1 may be useful as a therapeutic treatment for these cancers.
Synonyms:	ESX1 Antibody, ESX1L, ESXR1, ESX1L, ESX1R, Homeobox protein ESX1, Extraembryonic, spermatogenesis, homeobox 1
Host Species:	Rabbit
Clonality:	Polyclonal
Format:	IgG

Target Details

Gene Name:	ESX1
Reactivity:	Human
Immunogen Type:	Conjugated Peptide

Immunogen:	Anti-ESX1 antibody was prepared from whole rabbit serum produced by repeated immunizations with a 19 amino acid synthetic peptide near the internal region of human ESX1.
Purity/Specificity:	Anti-ESX1 Antibody was affinity purified from monospecific antiserum by immunoaffinity chromatography. Cross reactivity with ESX1 from other sources has not been determined.
Relevant Links:	<ul style="list-style-type: none">• UniProtKB - Q8N693• GeneID - 80712• NCBI - NP_703149.1

Application Details

Tested Applications:	ELISA, IF, IHC, WB
Application Note:	Anti-ESX1 Antibody has been tested for use in ELISA, Western Blotting, Immunohistochemistry and Immunofluorescence. Specific conditions for reactivity should be optimized by the end user. Expect a band at approximately 44 kDa in Western Blots of specific cell lysates and tissues.
Assay Dilutions:	All assays should be optimized by the user. Recommended dilutions (if any) may be listed below.
ELISA:	1:10,000 - 1:20,000
IF:	20 µg/mL
IHC:	2.5 µg/mL
WB:	1-2 µg/mL

Formulation

Physical State:	Liquid (sterile filtered)
Concentration:	1 mg/mL by UV absorbance at 280 nm
Buffer:	0.01 M Sodium Phosphate, 0.25 M Sodium Chloride, pH 7.2
Preservative:	0.02% (w/v) Sodium Azide
Stabilizer:	None

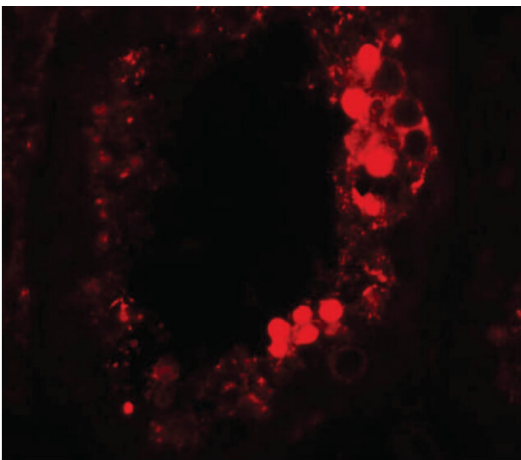
Shipping & Handling

Shipping Condition:	Dry Ice
----------------------------	---------

Storage Condition: Store vial at -20° C prior to opening. Aliquot contents and freeze at -20° C or below for extended storage. Avoid cycles of freezing and thawing. Centrifuge product if not completely clear after standing at room temperature. This product is stable for several weeks at 4° C as an undiluted liquid. Dilute only prior to immediate use.

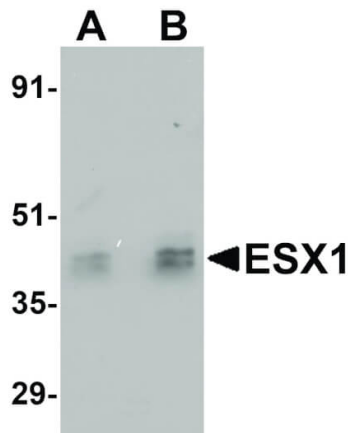
Expiration: Expiration date is one (1) year from date of receipt.

Images



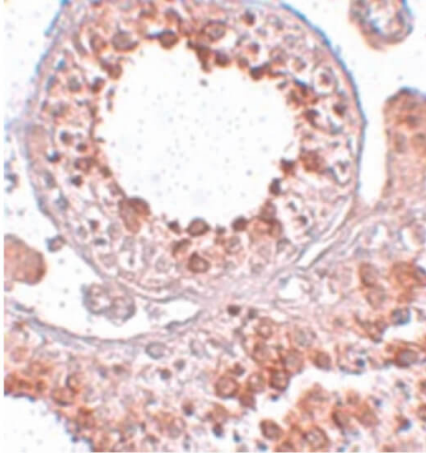
Immunofluorescence Microscopy

Immunofluorescence Microscopy of ESX1 antibody. Tissue: Human testis tissue. Fixation: 0.5% PFA. Antigen retrieval: not required. Primary antibody: ESX1 antibody at 20 µg/mL for 1 h at RT. Secondary antibody: Fluorescein rabbit secondary antibody at 1:10,000 for 45 min at RT. Localization: ESX1 is nuclear and cytoplasmic. Staining: ESX1 as red fluorescent signal.



Western Blot

Western Blot of ESX1 antibody. Lane 1: Human testis tissue lysate with ESX1 antibody at 1 µg/mL. Lane 2: Human testis tissue lysate with ESX1 antibody at 2 µg/mL. Secondary antibody: Peroxidase rabbit secondary antibody at 1:10,000 for 45 min at RT. Block: 5% BLOTTO overnight at 4°C. Predicted/Observed size: 44 kDa, 44 kDa for ESX1. Other band(s): ESX1 splice variants and isoforms.

**Immunohistochemistry**

Immunohistochemistry of ESX1 antibody. Tissue: Human testis tissue. Fixation: formalin fixed paraffin embedded. Antigen retrieval: not required. Primary antibody: ESX1 antibody at 2.5 µg/mL for 1 h at RT. Secondary antibody: Peroxidase rabbit secondary antibody at 1:10,000 for 45 min at RT. Localization: ESX1 is nuclear and cytoplasmic. Staining: ESX1 as precipitated brown signal with blue nuclear counterstain.

Disclaimer

This product is for research use only and is not intended for therapeutic or diagnostic applications. Please contact a technical service representative for more information. All products of animal origin manufactured by Rockland Immunochemicals are derived from starting materials of North American origin. Collection was performed in United States Department of Agriculture (USDA) inspected facilities and all materials have been inspected and certified to be free of disease and suitable for exportation. All properties listed are typical characteristics and are not specifications. All suggestions and data are offered in good faith but without guarantee as conditions and methods of use of our products are beyond our control. All claims must be made within 30 days following the date of delivery. The prospective user must determine the suitability of our materials before adopting them on a commercial scale. Suggested uses of our products are not recommendations to use our products in violation of any patent or as a license under any patent of Rockland Immunochemicals, Inc. If you require a commercial license to use this material and do not have one, then return this material, unopened to: Rockland Inc., P.O. BOX 5199, Limerick, Pennsylvania, USA.