

Datasheet for 600-401-B11**pRb2 p130 Antibody****Overview**

| | |
|----------------------|---|
| Description: | Anti-Spa310 (pRb2/p130) (RABBIT) Antibody - 600-401-B11 |
| Item No.: | 600-401-B11 |
| Size: | 100 µg |
| Applications: | ELISA, WB |
| Reactivity: | Human |
| Host Species: | Rabbit |

Product Details

| | |
|----------------------|--|
| Background: | Spa310 is a 39 aa-long polypeptide encoded by a sequence which resides in the spacer region of the tumor suppressor Rb2 gene. Rb2 is a member of the retinoblastoma (Rb) gene family. Proteins in this family, which also include pRb/p105 and pRb/p107, are important cellular factors which play well-recognized roles as tumor and growth suppressors. Both p107 and pRb2/p130 share the ability to physically interact and inhibit the kinase activity of the Cdk2/Cyclin A and Cdk2/Cyclin E complexes, which play critical roles in cell cycle regulation. Spa310 is the region of the pRb2/p130 protein that is responsible for Cdk2/Cyclin E/A inhibition. Spa310 has also been shown to suppress cell growth as observed by colony formation, and to reduce volume of tumor growth in nude mice, likely through arrest in the G ₀ /G ₁ phase of the cell cycle. Understandably, the Spa310 small molecule represents a potentially significant pharmaceutical product in the treatment of hyperproliferative disorders. |
| Synonyms: | rabbit anti-pRb2/p130 antibody, rabbit anti-pRb2 antibody, rabbit anti-p130 antibody, rabbit anti-Spa310 antibody, 130 kDa retinoblastoma associated protein antibody, RBR-2 antibody, RBL2 antibody, RB2 antibody, Retinoblastoma like 2 antibody, Retinoblastoma like protein 2 antibody, Retinoblastoma Related Gene antibody |
| Host Species: | Rabbit |
| Clonality: | Polyclonal |
| Format: | IgG |

Target Details

| | |
|-------------------|------|
| Gene Name: | RBL2 |
|-------------------|------|

| | |
|----------------------------|--|
| Reactivity: | Human |
| Immunogen Type: | Conjugated Peptide |
| Immunogen: | This affinity purified antibody was prepared by repeated immunizations with a synthetic peptide corresponding to the Spa310 sequence of pRb2/p130 protein. A residue of cysteine was added to facilitate coupling. |
| Purity/Specificity: | This antiserum is directed against Spa310 and reacts with the Spa310 domain of pRb2/p130 from human tissues. Based on the sequence we expect this antibody to react as well Spa310 from chimpanzee and orangutan, and with lesser affinity, Spa310 from horse, dog, bovine, rat and opossum. |
| Relevant Links: | <ul style="list-style-type: none">• UniProtKB - Q08999• NCBI - Q08999.3• GeneID - 5934 |

Application Details

| | |
|-----------------------------|--|
| Tested Applications: | ELISA, WB |
| Application Note: | This affinity purified antibody is tested for ELISA and western blotting. Specific conditions for reactivity should be optimized by the end user. Expect a band approximately 130 kDa in size corresponding to pRb2/p130, and a band approximately 4.2kDa in size corresponding to Spa310 peptide (latter not shown), by western blotting in the appropriate cell lysate or extract. |
| Assay Dilutions: | All assays should be optimized by the user. Recommended dilutions (if any) may be listed below. |
| ELISA: | 1:75,000 - 1:100,000 |
| IP: | 1:100 |
| WB: | 1:500 - 1:5,000 |

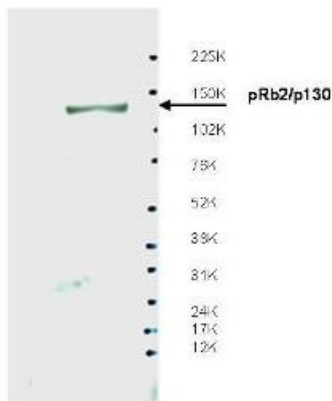
Formulation

| | |
|------------------------|--|
| Physical State: | Liquid (sterile filtered) |
| Concentration: | 1.39 mg/mL by UV absorbance at 280 nm |
| Buffer: | 0.02 M Potassium Phosphate, 0.15 M Sodium Chloride, pH 7.2 |
| Preservative: | 0.1% (w/v) Sodium Azide |
| Stabilizer: | None |

Shipping & Handling

| | |
|----------------------------|---|
| Shipping Condition: | Dry Ice |
| Storage Condition: | Store vial at -20° C prior to opening. Aliquot contents and freeze at -20° C or below for extended storage. Avoid cycles of freezing and thawing. Centrifuge product if not completely clear after standing at room temperature. This product is stable for several weeks at 4° C as an undiluted liquid. Dilute only prior to immediate use. |
| Expiration: | Expiration date is one (1) year from date of receipt. |

Images



Western Blot

Western blot using Rockland's affinity purified anti-Spa310 antibody shows detection of endogenous pRb2/p130 protein in whole LNCaP cell extracts. The band at ~130 kDa, indicated by the arrowhead, corresponds to the expected molecular weight of pRb2/p130. The membrane was blocked overnight with a milk buffer at 4° C. Primary antibody was diluted 1:500 and reacted with the membrane overnight at 4° C. ECL was used for detection. Personal communication, Ang Sun, Sbarro Institute for Cancer Research and Molecular Medicine, Temple University, Philadelphia, PA.

Disclaimer

This product is for research use only and is not intended for therapeutic or diagnostic applications. Please contact a technical service representative for more information. All products of animal origin manufactured by Rockland Immunochemicals are derived from starting materials of North American origin. Collection was performed in United States Department of Agriculture (USDA) inspected facilities and all materials have been inspected and certified to be free of disease and suitable for exportation. All properties listed are typical characteristics and are not specifications. All suggestions and data are offered in good faith but without guarantee as conditions and methods of use of our products are beyond our control. All claims must be made within 30 days following the date of delivery. The prospective user must determine the suitability of our materials before adopting them on a commercial scale. Suggested uses of our products are not recommendations to use our products in violation of any patent or as a license under any patent of Rockland Immunochemicals, Inc. If you require a commercial license to use this material and do not have one, then return this material, unopened to: Rockland Inc., P.O. BOX 5199, Limerick, Pennsylvania, USA.