

Datasheet for 600-401-AZ9**Emerin Antibody****Overview**

Description:	Anti-Emerin (RABBIT) Antibody - 600-401-AZ9
Item No.:	600-401-AZ9
Size:	100 µg
Applications:	ELISA, IF, IHC, WB
Reactivity:	Human, Mouse, Rat
Host Species:	Rabbit

Product Details

Background:	Emerin is a serine-rich nuclear membrane protein and a member of the nuclear lamina-associated protein family that includes proteins such as LAP2 and MAN1. Each family member, including Emerin, has an ~40 amino acid LEM-domains that binds barrier-to-autointegration (BANF1), a conserved chromatin protein that also serves as a host cell component of retroviral integration complexes, including that of HIV. Emerin is anchored at the inner membrane of the nuclear envelope where it binds to nuclear intermediate filaments that are formed by lamin proteins. Drefuss-Emerin muscular dystrophy is an X-linked inherited degenerative myopathy resulting from mutation in the emerin gene.
Synonyms:	Emerin Antibody, STA, EDMD, LEMD5, STA, Emerin
Host Species:	Rabbit
Clonality:	Polyclonal
Format:	IgG

Target Details

Gene Name:	EMD
Reactivity:	Human, Mouse, Rat
Immunogen Type:	Conjugated Peptide
Immunogen:	Anti-Emerin antibody was prepared from whole rabbit serum produced by repeated immunizations with a 19 amino acid synthetic peptide from near the N-terminus of human Emerin.

Purity/Specificity: Anti-Emerin Antibody was affinity purified from monospecific antiserum by immunoaffinity chromatography. Cross reactivity with Emerin from other sources has not been determined.

Relevant Links:

- [UniProtKB - P50402](#)
- [GeneID - 2010](#)
- [NCBI - NP_000108](#)

Application Details

Tested Applications: ELISA, IF, IHC, WB

Application Note: Anti-Emerin Antibody has been tested for use in ELISA, Western Blotting, Immunohistochemistry and Immunofluorescence. Specific conditions for reactivity should be optimized by the end user. Expect a band at approximately 29 kDa in Western Blots of specific cell lysates and tissues.

Assay Dilutions: All assays should be optimized by the user. Recommended dilutions (if any) may be listed below.

ELISA: 1:5000 - 1:10000

IF: 10 µg/mL

IHC: 2.5 µg/mL

WB: 0.5 - 1 µg/mL

Formulation

Physical State: Liquid (sterile filtered)

Concentration: 1 mg/mL by UV absorbance at 280 nm

Buffer: 0.01 M Sodium Phosphate, 0.25 M Sodium Chloride, pH 7.2

Preservative: 0.02% (w/v) Sodium Azide

Stabilizer: None

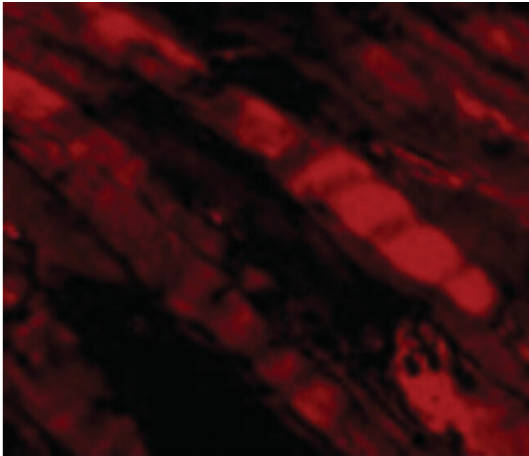
Shipping & Handling

Shipping Condition: Dry Ice

Storage Condition: Store vial at -20° C prior to opening. Aliquot contents and freeze at -20° C or below for extended storage. Avoid cycles of freezing and thawing. Centrifuge product if not completely clear after standing at room temperature. This product is stable for several weeks at 4° C as an undiluted liquid. Dilute only prior to immediate use.

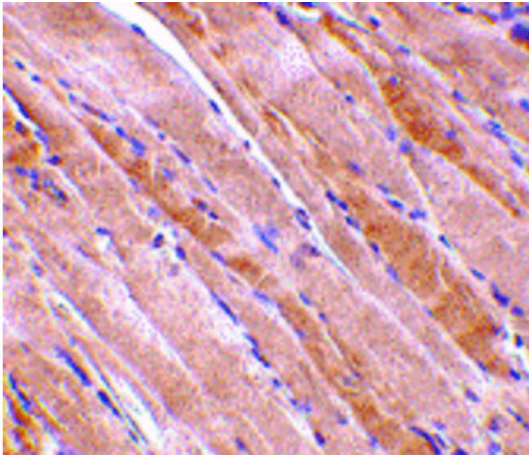
Expiration: Expiration date is one (1) year from date of receipt.

Images



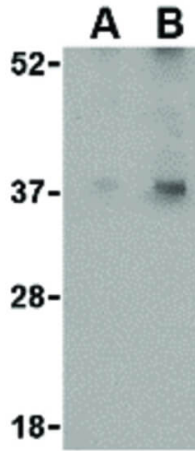
Immunofluorescence Microscopy

Immunofluorescence Microscopy of Emerin antibody.
Tissue: Human Skeletal Muscle cells. Fixation: 0.5% PFA.
Antigen retrieval: not required. Primary antibody: Emerin antibody at 5 $\mu\text{g}/\text{mL}$ for 1 h at RT. Secondary antibody: Fluorescein rabbit secondary antibody at 1:10,000 for 45 min at RT. Localization: Emerin is nuclear and cytoplasmic. Staining: Emerin as red fluorescent signal



Immunohistochemistry

Immunohistochemistry of Emerin antibody. Tissue: Human skeletal muscle tissue. Fixation: formalin fixed paraffin embedded. Antigen retrieval: not required. Primary antibody: Emerin antibody at 2.5 $\mu\text{g}/\text{mL}$ for 1 h at RT. Secondary antibody: Peroxidase rabbit secondary antibody at 1:10,000 for 45 min at RT. Localization: Emerin is cytoplasmic. Staining: Emerin as precipitated red signal with hematoxylin purple nuclear counterstain.

**Western Blot**

Western Blot of Emerin antibody. Lane A: Human skeletal muscle tissue lysate at 0.5 $\mu\text{g}/\text{mL}$. Lane B: Human skeletal muscle tissue lysate at 1 $\mu\text{g}/\text{mL}$. Load: 35 μg per lane. Secondary antibody: Peroxidase rabbit secondary antibody at 1:10,000 for 45 min at RT. Block: 5% BLOTTO overnight at 4°C. Predicted/Observed size: 28.9 kDa, ~37 kDa for Emerin.

Disclaimer

This product is for research use only and is not intended for therapeutic or diagnostic applications. Please contact a technical service representative for more information. All products of animal origin manufactured by Rockland Immunochemicals are derived from starting materials of North American origin. Collection was performed in United States Department of Agriculture (USDA) inspected facilities and all materials have been inspected and certified to be free of disease and suitable for exportation. All properties listed are typical characteristics and are not specifications. All suggestions and data are offered in good faith but without guarantee as conditions and methods of use of our products are beyond our control. All claims must be made within 30 days following the date of delivery. The prospective user must determine the suitability of our materials before adopting them on a commercial scale. Suggested uses of our products are not recommendations to use our products in violation of any patent or as a license under any patent of Rockland Immunochemicals, Inc. If you require a commercial license to use this material and do not have one, then return this material, unopened to: Rockland Inc., P.O. BOX 5199, Limerick, Pennsylvania, USA.