

Datasheet for 600-401-AZ7**EIG121 Antibody****Overview**

Description:	Anti-EIG121 (RABBIT) Antibody - 600-401-AZ7
Item No.:	600-401-AZ7
Size:	100 µg
Applications:	ELISA, IF, IHC, WB
Reactivity:	Human
Host Species:	Rabbit

Product Details

Background:	EIG121 (Estrogen-induced gene 121 protein) is thought to play a role as a marker of hyperestrogenic state and estrogen-related type I endometrial carcinoma. It belongs to the UPF0577 family. It is a 1013 amino acid single-pass transmembrane protein that, though expressed in normal endometrium, is overexpressed in endometroid tumors. As an evolutionarily conserved gene, EIG121 is also expressed during early xenopus development, showing maximum expression at the gastrula stage.
Synonyms:	EIG121 Antibody, EIG, EIG1, UPF0577 protein KIAA1324, Estrogen-induced gene 121 protein, UNQ2426/PRO4985
Host Species:	Rabbit
Clonality:	Polyclonal
Format:	IgG

Target Details

Gene Name:	KIAA1324
Reactivity:	Human
Immunogen Type:	Conjugated Peptide
Immunogen:	Anti-EIG121 antibody was prepared from whole rabbit serum produced by repeated immunizations with an 18 amino acid synthetic peptide near the C-terminus of human EIG121.

Purity/Specificity: Anti-EIG121 Antibody was affinity purified from monospecific antiserum by immunoaffinity chromatography. At least four isoforms of EIG121 known to exist. EIG121 antibody is predicted to not cross-react with other UPF0577 protein family members.

Relevant Links:

- [UniProtKB - Q6UXG2](#)
- [GeneID - 1957](#)
- [NCBI - NP_065826](#)

Application Details

Tested Applications: ELISA, IF, IHC, WB

Application Note: Anti-EIG121 Antibody has been tested for use in ELISA, Western Blotting, Immunocytochemistry and Immunofluorescence. Specific conditions for reactivity should be optimized by the end user. Expect a band at approximately 111 kDa in Western Blots of specific cell lysates and tissues.

Assay Dilutions: All assays should be optimized by the user. Recommended dilutions (if any) may be listed below.

ELISA: 1:10,000

IF: 20 µg/mL

WB: 1 µg/mL

Formulation

Physical State: Liquid (sterile filtered)

Concentration: 1 mg/mL by UV absorbance at 280 nm

Buffer: 0.01 M Sodium Phosphate, 0.25 M Sodium Chloride, pH 7.2

Preservative: 0.02% (w/v) Sodium Azide

Stabilizer: None

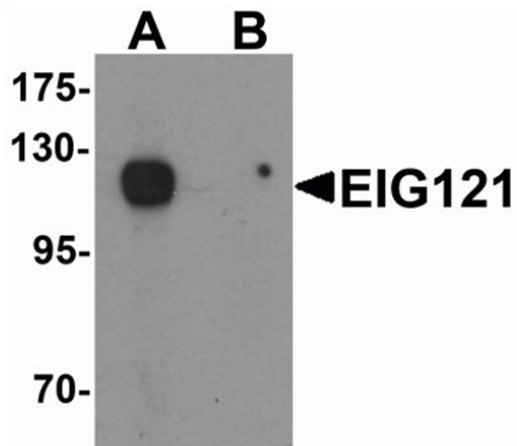
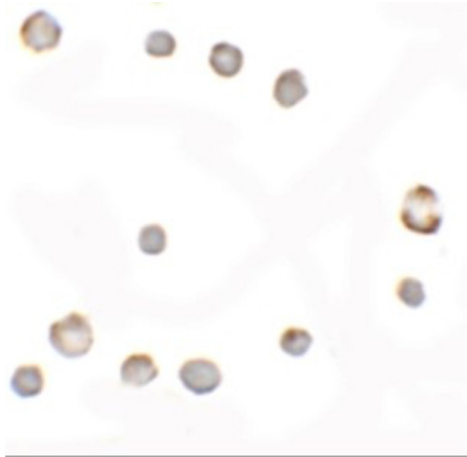
Shipping & Handling

Shipping Condition: Dry Ice

Storage Condition: Store vial at -20° C prior to opening. Aliquot contents and freeze at -20° C or below for extended storage. Avoid cycles of freezing and thawing. Centrifuge product if not completely clear after standing at room temperature. This product is stable for several weeks at 4° C as an undiluted liquid. Dilute only prior to immediate use.

Expiration: Expiration date is one (1) year from date of receipt.

Images



Immunocytochemistry

Immunocytochemistry of EIG121.

Cell: MCF7 cells. Primary Antibody: EIG121 antibody at 5 $\mu\text{g}/\text{mL}$.

Western Blot

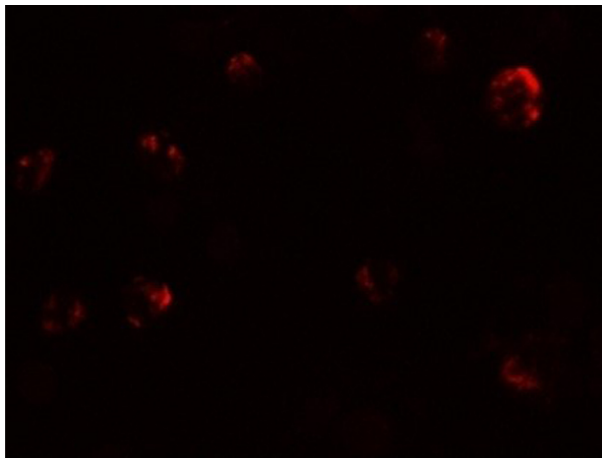
Western blot analysis of EIG121. Load: MCF7 cell lysate.

Primary Antibody: EIG121 antibody at 1 $\mu\text{g}/\text{mL}$ in (A) the absence and (B) the presence of blocking peptide.

Immunofluorescence Microscopy

Immunofluorescence of EIG121. Cell: MCF7 cells. Primary

Antibody: EIG121 antibody at 20 $\mu\text{g}/\text{mL}$.



Disclaimer

This product is for research use only and is not intended for therapeutic or diagnostic applications. Please contact a technical service representative for more information. All products of animal origin manufactured by Rockland Immunochemicals are derived from starting materials of North American origin. Collection was performed in United States Department of Agriculture (USDA) inspected facilities and all materials have been inspected and certified to be free of disease and suitable for exportation. All properties listed are typical characteristics and are not specifications. All suggestions and data are offered in good faith but without guarantee as conditions and methods of use of our products are beyond our control. All claims must be made within 30 days following the date of delivery. The prospective user must determine the suitability of our materials before adopting them on a commercial scale. Suggested uses of our products are not recommendations to use our products in violation of any patent or as a license under any patent of Rockland Immunochemicals, Inc. If you require a commercial license to use this material and do not have one, then return this material, unopened to: Rockland Inc., P.O. BOX 5199, Limerick, Pennsylvania, USA.