

Datasheet for 600-401-AZ6**EI24 Antibody****Overview**

Description:	Anti-EI24 (RABBIT) Antibody - 600-401-AZ6
Item No.:	600-401-AZ6
Size:	100 µg
Applications:	ELISA, IHC, WB
Reactivity:	Human, Mouse, Rat
Host Species:	Rabbit

Product Details

Background:	The etoposide-induced 24 (EI24) protein is an immediate-early induction target of p53-mediated apoptosis and functions as a tumor suppressor. EI24 contains six transmembrane domains and is localized to the endoplasmic reticulum (ER). It binds to Bcl-2 and may contribute to apoptosis by modulating the activity and function of Bcl-2. EI24 is highly mutated in aggressive breast cancers and its loss in breast cancer tissue correlates with tumor invasiveness. Similar findings in invasive cervical carcinoma suggest that EI24 may be a promising therapeutic target in the treatment of invasive cancer.
Synonyms:	EI24 Antibody, EPG4, PIG8, TP53I8, p53-induced gene 8 protein
Host Species:	Rabbit
Clonality:	Polyclonal
Format:	IgG

Target Details

Gene Name:	EI24
Reactivity:	Human, Mouse, Rat
Immunogen Type:	Conjugated Peptide
Immunogen:	Anti-EI24 antibody was prepared from whole rabbit serum produced by repeated immunizations with a 19 amino acid synthetic peptide near the C-terminus of human EI24.

Purity/Specificity:	Anti-EI24 Antibody was affinity purified from monospecific antiserum by immunoaffinity chromatography. At least two isoforms of EI24 are known to exist; this antibody will only detect the larger isoform.
Relevant Links:	<ul style="list-style-type: none">• UniProtKB - O14681• GeneID - 9538• NCBI - NP_004870

Application Details

Tested Applications:	ELISA, IHC, WB
Application Note:	Anti-EI24 Antibody has been tested for use in ELISA, Western Blotting, and Immunohistochemistry. Specific conditions for reactivity should be optimized by the end user. Expect a band at approximately 39 kDa in Western Blots of specific cell lysates and tissues.
Assay Dilutions:	All assays should be optimized by the user. Recommended dilutions (if any) may be listed below.
ELISA:	1:10,000 - 1:20,000
IHC:	5 µg/mL
WB:	1-2 µg/mL

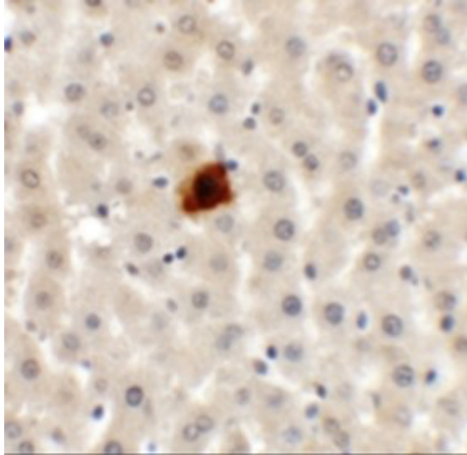
Formulation

Physical State:	Liquid (sterile filtered)
Concentration:	1 mg/mL by UV absorbance at 280 nm
Buffer:	0.01 M Sodium Phosphate, 0.25 M Sodium Chloride, pH 7.2
Preservative:	0.02% (w/v) Sodium Azide
Stabilizer:	None

Shipping & Handling

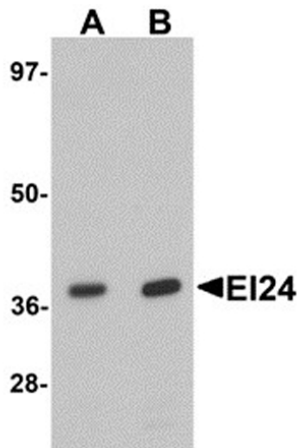
Shipping Condition:	Dry Ice
Storage Condition:	Store vial at -20° C prior to opening. Aliquot contents and freeze at -20° C or below for extended storage. Avoid cycles of freezing and thawing. Centrifuge product if not completely clear after standing at room temperature. This product is stable for several weeks at 4° C as an undiluted liquid. Dilute only prior to immediate use.
Expiration:	Expiration date is one (1) year from date of receipt.

Images



Immunohistochemistry

Immunohistochemistry of EI24. Tissue: rat liver tissue.
Primary Antibody: EI24 antibody at 5 µg/mL.



Western Blot

Western blot analysis of EI24.
Load: rat liver tissue lysate.
Primary Antibody: EI24 antibody at (A) 1 µg/mL and (B) 2 µg/mL.

Disclaimer

This product is for research use only and is not intended for therapeutic or diagnostic applications. Please contact a technical service representative for more information. All products of animal origin manufactured by Rockland Immunochemicals are derived from starting materials of North American origin. Collection was performed in United States Department of Agriculture (USDA) inspected facilities and all materials have been inspected and certified to be free of disease and suitable for exportation. All properties listed are typical characteristics and are not specifications. All suggestions and data are offered in good faith but without guarantee as conditions and methods of use of our products are beyond our control. All claims must be made within 30 days following the date of delivery. The prospective user must determine the suitability of our materials before adopting them on a commercial scale. Suggested uses of our products are not recommendations to use our products in violation of any patent or as a license under any patent of Rockland Immunochemicals, Inc. If you require a commercial license to use this material and do not have one, then return this material, unopened to: Rockland Inc., P.O. BOX 5199, Limerick, Pennsylvania, USA.