

Datasheet for 600-401-AZ0**EDA1 Antibody****Overview**

Description:	Anti-EDA1 (RABBIT) Antibody - 600-401-AZ0
Item No.:	600-401-AZ0
Size:	100 µg
Applications:	ELISA, IF, IHC, WB
Reactivity:	Human, Mouse, Rat
Host Species:	Rabbit

Product Details

Background:	Ectodysplasin A (EDA1) is a member of the TNF-related ligand family involved in the early epithelial-mesenchymal interaction that regulates ectodermal appendage formation (1). It is a trimeric type II membrane protein that co-localizes with cytoskeletal structures at the lateral and apical surfaces of cells and can be expressed as eight alternatively spliced isoforms in hair follicles and in the epidermis of adult skin (2,3). EDAs are required during development, and loss or mutation of EDA1 results in a group of developmental disorders identified as ectodermal dysplasia type 1 (4,5).
Synonyms:	Ectodysplasin A, Ectodermal dysplasia protein, ED1, ED1-A1, ED1-A2, EDA1, EDA2, EDA protein, HED, ODT1, STHAGX1, XHED, XLHED
Host Species:	Rabbit
Clonality:	Polyclonal
Format:	IgG

Target Details

Gene Name:	EDA
Reactivity:	Human, Mouse, Rat
Immunogen Type:	Conjugated Peptide
Immunogen:	Anti-EDA1 antibody was prepared from whole rabbit serum produced by repeated immunizations with an 19 amino acid peptide near the internal region of human EDA1.

Purity/Specificity: Anti-EDA1 antibody was affinity purified from monospecific antiserum by immunoaffinity chromatography. EDA1 antibody is human, mouse and rat reactive. Multiple isoforms of EDA1 are known to exist.

Relevant Links:

- [UniProtKB - Q92838](#)
- [GeneID - 1896](#)
- [NCBI - NP_001390](#)

Application Details

Tested Applications: ELISA, IF, IHC, WB

Application Note: Anti-EDA1 Antibody has been tested for use in ELISA, immunohistochemistry, immunofluorescence, and Western Blotting. Specific conditions for reactivity should be optimized by the end user. Expect a band at approximately 41 kDa in Western Blots of specific cell lysates and tissues.

Assay Dilutions: All assays should be optimized by the user. Recommended dilutions (if any) may be listed below.

ELISA: 1:10,000 - 1:20,000

IF: 20 µg/mL

IHC: 5 µg/mL

WB: 1-2 µg/mL

Formulation

Physical State: Liquid (sterile filtered)

Concentration: 1 mg/mL by UV absorbance at 280 nm

Buffer: 0.01 M Sodium Phosphate, 0.25 M Sodium Chloride, pH 7.2

Preservative: 0.02% (w/v) Sodium Azide

Stabilizer: None

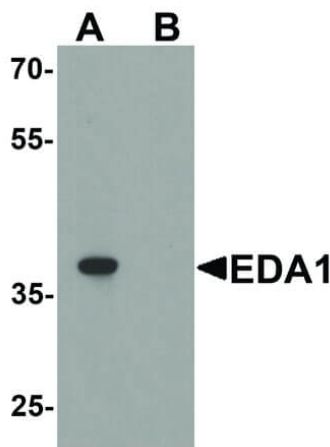
Shipping & Handling

Shipping Condition: Dry Ice

Storage Condition: Store vial at -20° C prior to opening. Aliquot contents and freeze at -20° C or below for extended storage. Avoid cycles of freezing and thawing. Centrifuge product if not completely clear after standing at room temperature. This product is stable for several weeks at 4° C as an undiluted liquid. Dilute only prior to immediate use.

Expiration: Expiration date is one (1) year from date of receipt.

Images



Western Blot

Western Blot of Rabbit anti-EDA1 antibody. Lane A: mouse kidney tissue lysate in the absence of blocking peptide. Lane B: mouse kidney tissue lysate in the presence of blocking peptide. Primary antibody: EDA1 antibody at 1 µg/mL overnight at 4°C. Secondary antibody: Goat anti-Rabbit HRP secondary antibody. Block: 5% BLOTTO. Predicted/Observed size: 16/43 kDa, 39 kDa for EDA1.

Disclaimer

This product is for research use only and is not intended for therapeutic or diagnostic applications. Please contact a technical service representative for more information. All products of animal origin manufactured by Rockland Immunochemicals are derived from starting materials of North American origin. Collection was performed in United States Department of Agriculture (USDA) inspected facilities and all materials have been inspected and certified to be free of disease and suitable for exportation. All properties listed are typical characteristics and are not specifications. All suggestions and data are offered in good faith but without guarantee as conditions and methods of use of our products are beyond our control. All claims must be made within 30 days following the date of delivery. The prospective user must determine the suitability of our materials before adopting them on a commercial scale. Suggested uses of our products are not recommendations to use our products in violation of any patent or as a license under any patent of Rockland Immunochemicals, Inc. If you require a commercial license to use this material and do not have one, then return this material, unopened to: Rockland Inc., P.O. BOX 5199, Limerick, Pennsylvania, USA.