

Datasheet for 600-401-AW0**DISP1 Antibody****Overview**

Description:	Anti-DISP1 (RABBIT) Antibody - 600-401-AW0
Item No.:	600-401-AW0
Size:	100 µg
Applications:	ELISA, IF, IHC, WB
Reactivity:	Human, Mouse
Host Species:	Rabbit

Product Details

Background:	DISP1 is the mammalian homolog of the Drosophila Dispatched segment-polarity gene and a key regulator of the Hedgehog (Hh) signaling pathway during embryonic development. DISP1 is required to move Shh from site of synthesis during embryogenesis; mutations in the gene result in lethality at mid-gestation and prevents specification of ventral cell types in the neural tube. Recent results have shown that DISP1 mediates the basolateral secretion of Shh and regulates growth of mammalian long bones through the control of Ihh.
Synonyms:	DISP1 Antibody, DISPA, DISPA, Protein dispatched homolog 1
Host Species:	Rabbit
Clonality:	Polyclonal
Format:	IgG

Target Details

Gene Name:	DISP1
Reactivity:	Human, Mouse
Immunogen Type:	Conjugated Peptide
Immunogen:	Anti-DISP1 antibody was prepared from whole rabbit serum produced by repeated immunizations with a 16 amino acid synthetic peptide near the N-terminus of human DISP1.

Purity/Specificity: Anti-DISP1 Antibody was affinity purified from monospecific antiserum by immunoaffinity chromatography. At least two isoforms of DISP1 are known to exist; this antibody will detect both isoforms. DISP1 antibody is predicted to not cross-react with EMX1.

Relevant Links:

- [UniProtKB - Q96F81](#)
- [GeneID - 84976](#)
- [NCBI - NP_116279](#)

Application Details

Tested Applications: ELISA, IF, IHC, WB

Application Note: Anti-DISP1 Antibody has been tested for use in ELISA, Western Blotting, Immunohistochemistry and Immunofluorescence. Specific conditions for reactivity should be optimized by the end user. Expect a band at approximately 170 kDa in Western Blots of specific cell lysates and tissues.

Assay Dilutions: All assays should be optimized by the user. Recommended dilutions (if any) may be listed below.

ELISA: 1:10,000 - 1:20,000

IF: 20 µg/mL

IHC: 2.5 µg/mL

WB: 1-2 µg/mL

Formulation

Physical State: Liquid (sterile filtered)

Concentration: 1 mg/mL by UV absorbance at 280 nm

Buffer: 0.01 M Sodium Phosphate, 0.25 M Sodium Chloride, pH 7.2

Preservative: 0.02% (w/v) Sodium Azide

Stabilizer: None

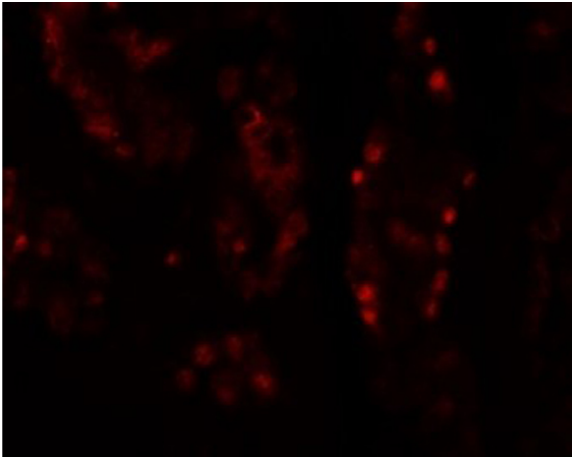
Shipping & Handling

Shipping Condition: Dry Ice

Storage Condition: Store vial at -20° C prior to opening. Aliquot contents and freeze at -20° C or below for extended storage. Avoid cycles of freezing and thawing. Centrifuge product if not completely clear after standing at room temperature. This product is stable for several weeks at 4° C as an undiluted liquid. Dilute only prior to immediate use.

Expiration: Expiration date is one (1) year from date of receipt.

Images

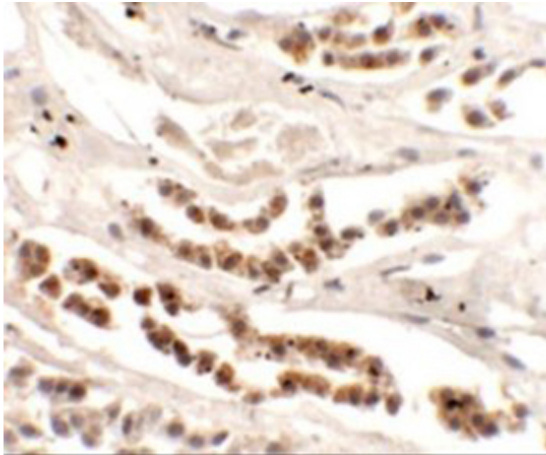


Immunofluorescence Microscopy

Immunofluorescence of DISP1.

Tissue: human kidney tissue.

Primary Antibody: DISP1 antibody at 20 $\mu\text{g}/\text{mL}$.

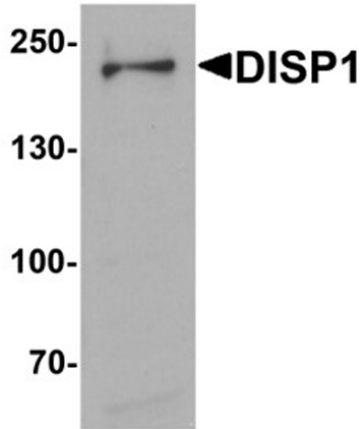


Immunohistochemistry

Immunohistochemistry of DISP1.

Tissue: human kidney tissue.

Primary Antibody: DISP1 antibody at 2.5 $\mu\text{g}/\text{mL}$.

**Western Blot**

Western blot analysis of DISP1.

Load: 3T3 cell lysate.

Primary Antibody: DISP1 antibody at 1 $\mu\text{g}/\text{mL}$.

Disclaimer

This product is for research use only and is not intended for therapeutic or diagnostic applications. Please contact a technical service representative for more information. All products of animal origin manufactured by Rockland Immunochemicals are derived from starting materials of North American origin. Collection was performed in United States Department of Agriculture (USDA) inspected facilities and all materials have been inspected and certified to be free of disease and suitable for exportation. All properties listed are typical characteristics and are not specifications. All suggestions and data are offered in good faith but without guarantee as conditions and methods of use of our products are beyond our control. All claims must be made within 30 days following the date of delivery. The prospective user must determine the suitability of our materials before adopting them on a commercial scale. Suggested uses of our products are not recommendations to use our products in violation of any patent or as a license under any patent of Rockland Immunochemicals, Inc. If you require a commercial license to use this material and do not have one, then return this material, unopened to: Rockland Inc., P.O. BOX 5199, Limerick, Pennsylvania, USA.