

Datasheet for 600-401-AV7**DIS3 Antibody****Overview**

Description:	Anti-DIS3 (RABBIT) Antibody - 600-401-AV7
Item No.:	600-401-AV7
Size:	100 µg
Applications:	ELISA, IF, IHC, WB
Reactivity:	Human, Mouse, Rat
Host Species:	Rabbit

Product Details

Background:	The exosome is involved in a multitude of cellular RNA processing and degradation events. DIS3, also known as exosome complex exonuclease RRP44, is a ribonuclease that acts directly in the processing, turnover, and surveillance of a large number of distinct RNA species. DIS3 localizes to both the cytoplasm and the nucleus and contains one PINc domain. It is widely expressed with highest expression in testis and is required for processing of 7S pre-RNA into a mature nuclear complex and, ultimately, for proper mitotic progression. Abnormal expression levels of DIS3 may be associated with colon cancer, suggesting a role for DIS3 in tumorigenesis.
Synonyms:	DIS3 Antibody, RRP44, dis3p, EXOSC11, KIAA1008, 2810028N01Rik, RRP44, Exosome complex exonuclease RRP44, Protein DIS3 homolog
Host Species:	Rabbit
Clonality:	Polyclonal
Format:	IgG

Target Details

Gene Name:	DIS3
Reactivity:	Human, Mouse, Rat
Immunogen Type:	Conjugated Peptide
Immunogen:	Anti-DIS3 antibody was prepared from whole rabbit serum produced by repeated immunizations with an 18 amino acid peptide near the N-terminus of human DIS3.

Purity/Specificity: Anti-DIS3 Antibody was affinity purified from monospecific antiserum by immunoaffinity chromatography. Multiple isoforms of DIS3 are known to exist.

Relevant Links:

- [UniProtKB - Q9Y2L1](#)
- [GeneID - 22894](#)
- [NCBI - NP_055768](#)

Application Details

Tested Applications: ELISA, IF, IHC, WB

Application Note: Anti-DIS3 Antibody has been tested for use in ELISA, Western Blotting, Immunohistochemistry and Immunofluorescence. Specific conditions for reactivity should be optimized by the end user. Expect a band at approximately 109 kDa in Western Blots of specific cell lysates and tissues.

Assay Dilutions: All assays should be optimized by the user. Recommended dilutions (if any) may be listed below.

ELISA: 1:10,000 - 1:20,000

IF: User Optimized

IHC: User Optimized

WB: 1-2 µg/mL

Formulation

Physical State: Liquid (sterile filtered)

Concentration: 1 mg/mL by UV absorbance at 280 nm

Buffer: 0.01 M Sodium Phosphate, 0.25 M Sodium Chloride, pH 7.2

Preservative: 0.02% (w/v) Sodium Azide

Stabilizer: None

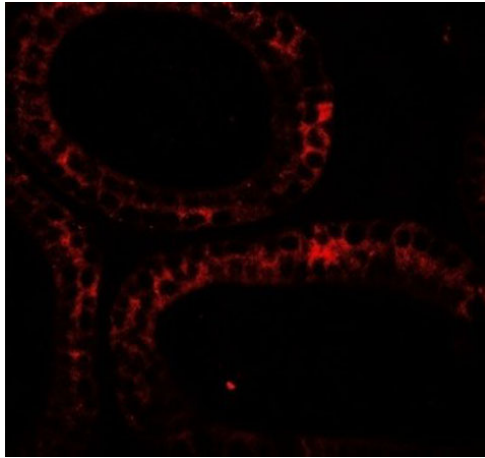
Shipping & Handling

Shipping Condition: Dry Ice

Storage Condition: Store vial at -20° C prior to opening. Aliquot contents and freeze at -20° C or below for extended storage. Avoid cycles of freezing and thawing. Centrifuge product if not completely clear after standing at room temperature. This product is stable for several weeks at 4° C as an undiluted liquid. Dilute only prior to immediate use.

Expiration: Expiration date is one (1) year from date of receipt.

Images

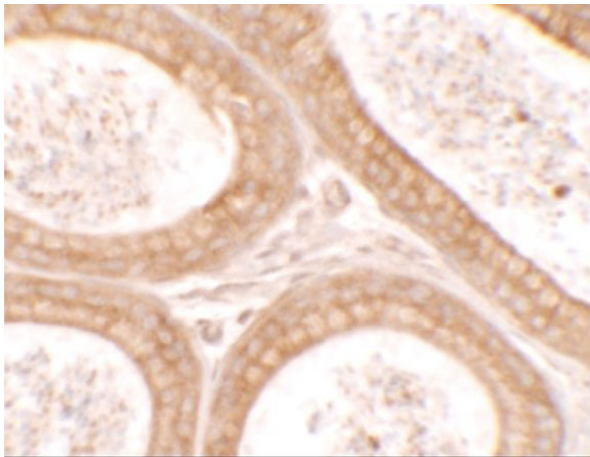


Immunofluorescence Microscopy

Immunofluorescence of DIS3.

Tissue: mouse testis tissue.

Primary Antibody: DIS3 antibody at 20 $\mu\text{g}/\text{mL}$.

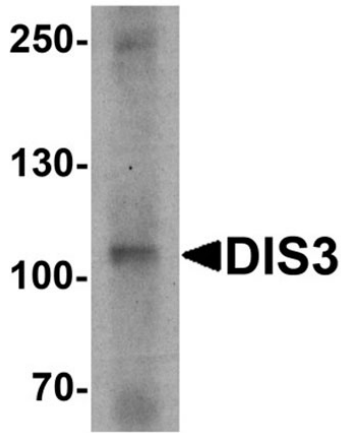


Immunohistochemistry

Immunohistochemistry of DIS3.

Tissue: mouse testis tissue.

Primary Antibody: DIS3 antibody at 2.5 $\mu\text{g}/\text{mL}$.

**Western Blot**

Western blot of DIS3.

Load: human ovary tissue lysate.

Primary Antibody: DIS3 antibody at 1 μ g/mL.

Disclaimer

This product is for research use only and is not intended for therapeutic or diagnostic applications. Please contact a technical service representative for more information. All products of animal origin manufactured by Rockland Immunochemicals are derived from starting materials of North American origin. Collection was performed in United States Department of Agriculture (USDA) inspected facilities and all materials have been inspected and certified to be free of disease and suitable for exportation. All properties listed are typical characteristics and are not specifications. All suggestions and data are offered in good faith but without guarantee as conditions and methods of use of our products are beyond our control. All claims must be made within 30 days following the date of delivery. The prospective user must determine the suitability of our materials before adopting them on a commercial scale. Suggested uses of our products are not recommendations to use our products in violation of any patent or as a license under any patent of Rockland Immunochemicals, Inc. If you require a commercial license to use this material and do not have one, then return this material, unopened to: Rockland Inc., P.O. BOX 5199, Limerick, Pennsylvania, USA.