

## Datasheet for 600-401-AV0

# DEPTOR Antibody

### Overview

<b>Description:</b>	Anti-DEPTOR (RABBIT) Antibody - 600-401-AV0
<b>Item No.:</b>	600-401-AV0
<b>Size:</b>	100 µg
<b>Applications:</b>	ELISA, IHC, WB
<b>Reactivity:</b>	Human, Mouse, Rat
<b>Host Species:</b>	Rabbit

### Product Details

<b>Background:</b>	DEPTOR is an mTOR (mammalian target of rapamycin)-interacting protein whose expression is negatively regulated by mTOR complex 1 (mTORC1) and mTORC2 (1). Loss of DEPTOR activates RP6SK1, Akt1, and SGK1, promotes cell growth and survival, and activates mTORC1 and mTORC2 kinase activities. DEPTOR expression is low in most cancers, but is often elevated in multiple myelomas (1). In response to stimulation by mitogens, DEPTOR is rapidly phosphorylated leading to its ubiquitination and degradation, allowing mTOR to generate an auto-amplification loop to promote its own full activation (2).
<b>Synonyms:</b>	DEPTOR Antibody, DEP.6, DEPDC6, DEP domain-containing mTOR-interacting protein, DEP domain-containing protein 6
<b>Host Species:</b>	Rabbit
<b>Clonality:</b>	Polyclonal
<b>Format:</b>	IgG

### Target Details

<b>Gene Name:</b>	DEPTOR
<b>Reactivity:</b>	Human, Mouse, Rat
<b>Immunogen Type:</b>	Conjugated Peptide
<b>Immunogen:</b>	Anti-DEPTOR antibody was prepared from whole rabbit serum produced by repeated immunizations with a 16 amino acid peptide near the internal region of human DEPTOR.

**Purity/Specificity:** Anti-DEPTOR antibody was affinity purified from monospecific antiserum by immunoaffinity chromatography. DEPTOR antibody is human, mouse and rat reactive. At least three isoforms of DEPTOR are known to exist; this antibody will detect all three isoforms.

**Relevant Links:**

- [UniProtKB - Q8TB45](#)
- [GeneID - 64798](#)
- [NCBI - NP\\_073620](#)

## Application Details

**Tested Applications:** ELISA, IHC, WB

**Application Note:** Anti-DEPTOR Antibody has been tested for use in ELISA, Western Blotting, and Immunohistochemistry. Specific conditions for reactivity should be optimized by the end user. Expect a band at approximately 46 kDa in Western Blots of specific cell lysates and tissues.

**Assay Dilutions:** All assays should be optimized by the user. Recommended dilutions (if any) may be listed below.

**ELISA:** 1:10,000 - 1:20,000

**IHC:** 5 µg/mL

**WB:** 1-2 µg/mL

## Formulation

**Physical State:** Liquid (sterile filtered)

**Concentration:** 1 mg/mL by UV absorbance at 280 nm

**Buffer:** 0.01 M Sodium Phosphate, 0.25 M Sodium Chloride, pH 7.2

**Preservative:** 0.02% (w/v) Sodium Azide

**Stabilizer:** None

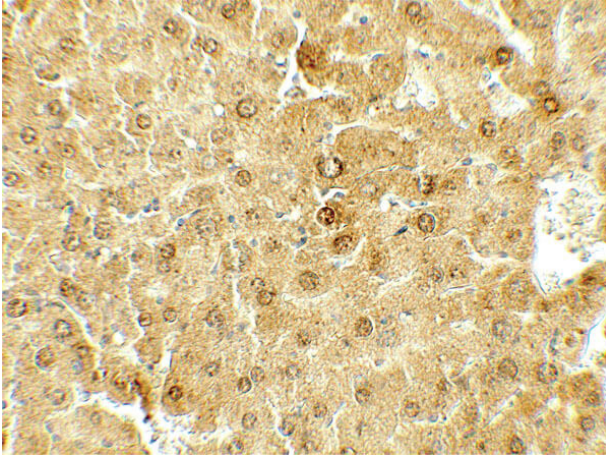
## Shipping & Handling

**Shipping Condition:** Dry Ice

**Storage Condition:** Store vial at -20° C prior to opening. Aliquot contents and freeze at -20° C or below for extended storage. Avoid cycles of freezing and thawing. Centrifuge product if not completely clear after standing at room temperature. This product is stable for several weeks at 4° C as an undiluted liquid. Dilute only prior to immediate use.

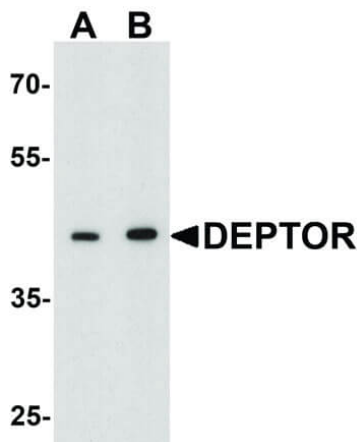
**Expiration:** Expiration date is one (1) year from date of receipt.

## Images



### Immunohistochemistry

Immunohistochemistry of Rabbit anti-DEPTOR antibody.  
Tissue: mouse liver. Primary antibody: DEPTOR antibody at 5 µg/mL. Secondary antibody: Peroxidase rabbit secondary antibody at 1:5,000. Localization: DEPTOR is intracellular. Staining: DEPTOR as precipitated brown signal.



### Western Blot

Western Blot of Rabbit anti-DEPTOR antibody. Lane A: mouse liver tissue lysate at 1 µg/mL. Lane B: mouse liver tissue lysate at 2 µg/mL. Primary antibody: DEPTOR antibody overnight at 4°C. Secondary antibody: Goat anti-Rabbit HRP secondary antibody. Block: 5% BLOTTO. Predicted/Observed size: 45 kDa, 42 kDa for DEPTOR.

## Disclaimer

This product is for research use only and is not intended for therapeutic or diagnostic applications. Please contact a technical service representative for more information. All products of animal origin manufactured by Rockland Immunochemicals are derived from starting materials of North American origin. Collection was performed in United States Department of Agriculture (USDA) inspected facilities and all materials have been inspected and certified to be free of disease and suitable for exportation. All properties listed are typical characteristics and are not specifications. All suggestions and data are offered in good faith but without guarantee as conditions and methods of use of our products are beyond our control. All claims must be made within 30 days following the date of delivery. The prospective user must determine the suitability of our materials before adopting them on a commercial scale. Suggested uses of our products are not recommendations to use our products in violation of any patent or as a license under any patent of Rockland Immunochemicals, Inc. If you require a commercial license to use this material and do not have one, then return this material, unopened to: Rockland Inc., P.O. BOX 5199, Limerick, Pennsylvania, USA.